

Recent Home Sale: 1601 LADD ST - \$479,000



Remarks Come visit this spacious home in desirable Parkway. Beautiful Sligo Creek Park path adjacent to the home. Large main floor master bedroom and bathroom in the rear addition of the home. Large screened in porch off large kitchen. Bonus rooms throughout the main and lower level. Separate living quarters, kitchenette and entrance in the spacious lower level. One car garage with cabinet mounts. Extra shed with ample storage. Recently renovated Master Bathroom with jacuzzi tub. Come visit and you won't be disappointed.

Rooms	Total	Main	Lower 1
Bedrooms	4	3	1
Full Baths	4	3	1
Half Baths			

Basic Information

Address 1601 LADD ST
City/Town WHEATON
State MD
Zip Code 20902
County MONTGOMERY
Type Detached
MLS# MDMC622550
Ownership Fee Simple

Style Ranch/Rambler
Adv Subdivision PARKWAY
DOM-Prop 38
Year Built 1956
Beds 4
Baths 4
Lot Size 11,276
Acres 0

Tax Living Area 2,052
Levels 2
Total Fin Sq Ft 2,052
Contract Date 2019-04-22
Close Date 2019-05-24
Close Price \$479,000
Seller Subsidy \$14,370

Exterior/Construction Features/Utilities

Exterior Brick
Water Type Public
Sewer Public Sewer

Hot Water Natural Gas
Heating Forced Air
Cooling Central A/C

Garage Spaces 1.00

Tax/Legal Information

Tax ID # 161301368953
Tax Year 2018
Tax Assessment Value \$417,600
Total Taxes \$5,206

Legal Subdiv PARKWAY
County Tax \$4,613
Lot 8
Short Sale No

Foreclosure No
REO/Bank Owned No

Interior Features/Amenities

Appliances Cooktop, Dishwasher, Disposal, Dryer, Oven - Single, Refrigerator, Stove

Int. Style Breakfast Area, Dining Area, Entry Level Bedroom, Floor Plan - Traditional, Kitchen - Eat-In, Kitchen - Table Space, Primary Bath(s)

Doors French
Windows Bay/Bow
Fireplaces 1
Basement Fully Finished
Garage Garage - Front Entry

Information Courtesy of C. H. Kay Realty, Inc.. Copyright 2021 Bright MLS. Information is believed to be accurate, but should not be relied upon without verification. Accuracy of square footage, lot size and other information is not guaranteed. This website courtesy of Barbara Ciment, Realtor, Long & Foster Real Estate, Inc.



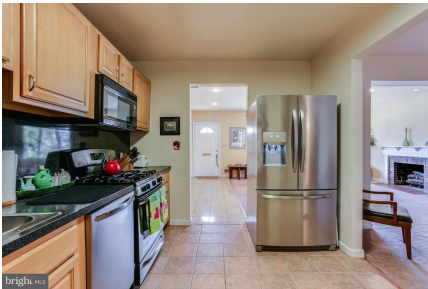
CIMENT & SHIELDS TEAM

Barbara Ciment, Associate Broker



(C) 301-346-9126 (O) 301-424-0900
 barbara@ciment.com www.ciment.com





CIMENT & SHIELDS TEAM

Barbara Ciment, Associate Broker

LONG & FOSTER REAL ESTATE

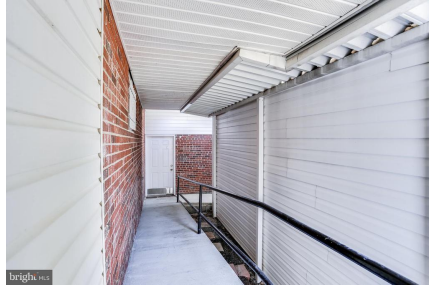
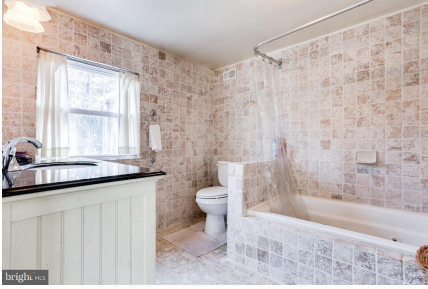
(C) 301-346-9126

(O) 301-424-0900

barbara@ciment.com

www.ciment.com





CIMENT & SHIELDS TEAM

Barbara Ciment, Associate Broker

LONG & FOSTER REAL ESTATE

(C) 301-346-9126 (O) 301-424-0900
barbara@ciment.com www.ciment.com





CIMENT & SHIELDS TEAM

Barbara Ciment, Associate Broker

LONG & FOSTER REAL ESTATE

(C) 301-346-9126 (O) 301-424-0900
barbara@ciment.com www.ciment.com

