

## Recent Home Sale: 7611 MAPLE AVE #304 - \$216,495



**Remarks** Enjoy this updated condo with nightly sunsets from the comfort of your living room, the freshness of the over-sized balcony or the bedrooms. Has an extra space for the use of your imagination, could be storage or walk-in closet or make it your office area. All new kitchen, includes granite counters, wood cabinetry, SS Whirlpool appliances, hardware, lighting. There is a community laundry area on the second floor but there is a hookup for a washer and dryer combo unit in the kitchen if desire to install one. New contemporary flooring w/luxury 5 + baseboards, window casings & 6 panel doors throughout. All new HVAC motherboard, ceiling fans. LED lighting throughout. Classic tile & marble bathroom w/new vanity, lighting & fixtures. Live video wifi motion activated doorbell. Already wired for FIOS. On the same floor there is a bike storage. Location is great having the Metro rail within 1 mile and walking distance to bus stop or commuter bikes. Takoma Piney Branch Local Park, Opal A. Daniels Neighborhood Park & Takoma Park Maryland library close by. Downtown Silver Spring & DC within 15 minutes driving.

Rooms	Total	Main
Bedrooms	2	2
Full Baths	1	1
Half Baths		

### Basic Information

**Address** 7611 MAPLE AVE #304  
**City/Town** TAKOMA PARK  
**State** MD  
**Zip Code** 20912  
**County** MONTGOMERY  
**Type** Unit/Flat/Apartment  
**MLS#** MDMC672540

**Ownership** Condominium  
**Style** Unit/Flat  
**Adv Subdivision** TAKOMA PARK  
**DOM-Prop** 57  
**Year Built** 1962  
**Beds** 2  
**Baths** 1

**Tax Living Area** 968  
**Levels** 1  
**Total Fin Sq Ft** 968  
**Contract Date** 2019-10-13  
**Close Date** 2019-11-07  
**Close Price** \$216,495  
**Seller Subsidy** \$6,495

### Exterior/Construction Features/Utilities

**Exterior** Other  
**Water Type** Public

**Sewer** Public Sewer  
**Heating** Central

**Cooling** Central A/C

### Tax/Legal Information

**Tax ID #** 161303272470  
**Tax Year** 2019  
**Tax Assessment Value** \$150,000  
**Total Taxes** \$2,589

**Legal Subdiv** TAKOMA PARK  
**County Tax** \$1,727  
**City/Town Taxes** \$828  
**Short Sale** No

**Foreclosure** No  
**REO/Bank Owned** No

### HOA/Condo/Coop Info

**Condo/Coop Fee** \$657

**Amenities** Elevator, Laundry Facilities, Library

Information Courtesy of RE/MAX Realty Group. Copyright 2021 Bright MLS. Information is believed to be accurate, but should not be relied upon without verification. Accuracy of square footage, lot size and other information is not guaranteed. This website courtesy of Barbara Ciment, Realtor, Long & Foster Real Estate, Inc.



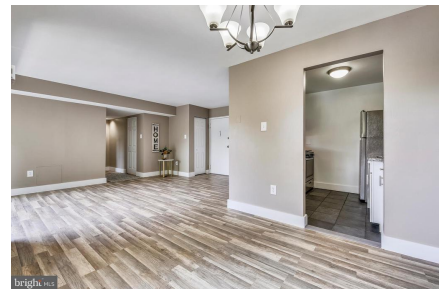
**CIMENT & SHIELDS TEAM**

**Barbara Ciment, Associate Broker**



(C) 301-346-9126 (O) 301-424-0900  
 barbara@ciment.com www.ciment.com





**CIMENT & SHIELDS TEAM**

**Barbara Ciment, Associate Broker**

**LONG & FOSTER REAL ESTATE**

(C) 301-346-9126

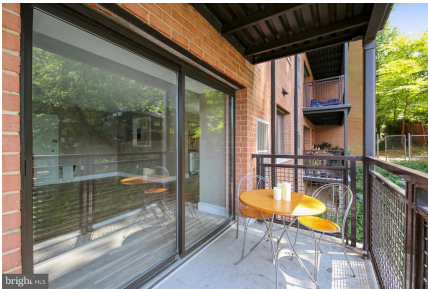
(O) 301-424-0900

[barbara@ciment.com](mailto:barbara@ciment.com)

[www.ciment.com](http://www.ciment.com)







**CIMENT & SHIELDS TEAM**

**Barbara Ciment, Associate Broker**

**LONG & FOSTER REAL ESTATE**

(C) 301-346-9126

(O) 301-424-0900

[barbara@ciment.com](mailto:barbara@ciment.com)

[www.ciment.com](http://www.ciment.com)

