

Recent Home Sale: 7333 NEW HAMPSHIRE AVE #501 - \$187,000



Remarks Affordable luxury, over 900 square foot with fresh paint and all the bells and whistles overlooking the community Zen Garden. ASSIGNED PARKING. Many wonderful features: engineered hardwood floors, granite counters, 42" kitchen cabinets, stainless steel appliances and double closets. In-unit combo washer and dryer, luxury marble bath, large private balcony. Low condo fee includes ALL UTILITIES. FHA/VA APPROVED. Front desk, pool, tennis, gym, PET FRIENDLY.

Rooms	Total	Main
Bedrooms	1	1
Full Baths	1	1
Half Baths	0	0

Basic Information

Address 7333 NEW HAMPSHIRE AVE #501
City/Town TAKOMA PARK
State MD
Zip Code 20912
County MONTGOMERY
Type Unit/Flat/Apartment
MLS# MDMC649928
Ownership Condominium

Style Contemporary
Adv Subdivision TAKOMA PARK
DOM-Prop 96
Year Built 1967
Beds 1
Baths 1
Lot Size 1
Acres 0

Tax Living Area 902
Levels 1
Total Fin Sq Ft 902
Contract Date 2019-10-11
Close Date 2019-11-07
Close Price \$187,000

Exterior/Construction Features/Utilities

Exterior Brick
Water Type Public
Sewer Public Sewer

Hot Water Natural Gas
Heating 90% Forced Air, Hot Water
Cooling Zoned

Parking Assigned, Limited Common Elements, Parking Space Conveys
Spaces 1

Tax/Legal Information

Tax ID # 161303648881
Tax Year 2019
Tax Assessment Value \$176,000

Total Taxes \$2,988
County Tax \$1,995
City/Town Taxes \$957

Short Sale No
Foreclosure No
REO/Bank Owned No

Interior Features/Amenities

Appliances Washer/Dryer Hookups Only, Dishwasher, Disposal, Dryer - Front Loading, Exhaust Fan, Icemaker, Microwave, Refrigerator, Stove, Washer - Front Loading
Int. Style Kitchen - Gourmet, Breakfast Area, Dining Area, Upgraded Countertops, Window Treatments, Wood Floors, Floor Plan - Open

Windows Energy Efficient
Security Exterior Cameras, Main Entrance Lock
TV/Cable Electric Available, Cable TV Available, Natural Gas Available, Sewer Available, Water Available

Rooms/Levels/Flooring

Dining Room	Main	HardWood	Kitchen	Main	HardWood
Living Room	Main	HardWood	Primary Bedroom	Main	Carpet



CIMENT & SHIELDS TEAM

Barbara Ciment, Associate Broker



(C) 301-346-9126 (O) 301-424-0900
 barbara@ciment.com www.ciment.com



Recent Home Sale: 7333 NEW HAMPSHIRE AVE #501 - \$187,000

HOA/Condo/Coop Info

Condo/Coop Fee \$505

Amenities Common Grounds, Elevator, Fencing, Fitness Center, Pool - Outdoor, Reserved/Assigned Parking, Storage Bin, Swimming Pool, Tennis Courts, Tot Lots/Playground

Information Courtesy of Continental Properties, Ltd.. Copyright 2021 Bright MLS. Information is believed to be accurate, but should not be relied upon without verification. Accuracy of square footage, lot size and other information is not guaranteed. This website courtesy of Barbara Ciment, Realtor, Long & Foster Real Estate, Inc.



**CIMENT
& SHIELDS** TEAM

Barbara Ciment, Associate Broker



(C) 301-346-9126

(O) 301-424-0900

barbara@ciment.com

www.ciment.com





Takama Overlook,, full service building pet friend



Takama Overlook Condominium



Marble lobby three elevators



Welcome to Unit # 501



Freshly painted



42" Maple cabinets



Stainless steel appliances



Granite breakfast bar



Granite counters



Gourmet kitchen



Separate dining leads to balcony



Dining area



West facing balcony



Private balcony



View from Balcony



CIMENT & SHIELDS TEAM

Barbara Ciment, Associate Broker

LONG & FOSTER REAL ESTATE

(C) 301-346-9126

(O) 301-424-0900

barbara@ciment.com

www.ciment.com





Swimming pool



Bright with big windows



Hardwood flooring



Open floor plan



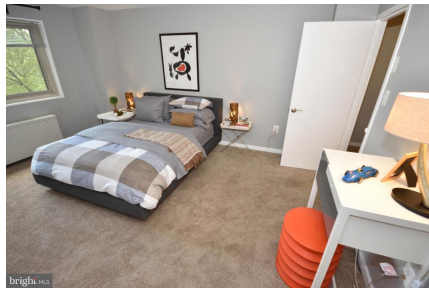
Open floor plan



Kitchen pass thru



Double closets with ClosetMaid system



Big enough for king size bed



Huge bedroom



Marble surround bathroom



Marble bath



Fitness Center



Tennis Courts



Barbeque Picnic Area



Fenced in dog park



CIMENT & SHIELDS TEAM

Barbara Ciment, Associate Broker

LONG & FOSTER REAL ESTATE

(C) 301-346-9126

(O) 301-424-0900

barbara@ciment.com

www.ciment.com

