

Recent Home Sale: 7333 NEW HAMPSHIRE AVE #115 - \$190,000



Remarks Granite Counter tops, SS Appliances , Hardwood floors. Out door pool , tennis court. BBQ area . Dog run. Full walkin closet . . Includes parking. Washer/Dryer in unit

Rooms	Total	Main
Bedrooms	1	1
Full Baths	1	1
Half Baths		

Basic Information

Address 7333 NEW HAMPSHIRE AVE #115
City/Town TAKOMA PARK
State MD
Zip Code 20912
County MONTGOMERY
Type Unit/Flat/Apartment
MLS# MDMC455466
Ownership Condominium

Style Ranch/Rambler
Adv Subdivision OVERLOOK HILLS
DOM-Prop 193
Year Built 1967
Beds 1
Baths 1
Lot Size 1
Acres 0

Tax Living Area 902
Levels 1
Total Fin Sq Ft 902
Contract Date 2019-07-20
Close Date 2019-08-28
Close Price \$190,000
Seller Subsidy \$10,630

Exterior/Construction Features/Utilities

Exterior Brick
Water Type Public

Sewer Private Sewer
Heating Forced Air

Cooling Central A/C
Parking Assigned, Rented/Permit Required

Tax/Legal Information

Tax ID # 161303679038
Tax Year 2019
Tax Assessment Value \$170,000
Total Taxes \$2,890

Legal Subdiv TAKOMA PARK
County Tax \$1,929
City/Town Taxes \$925
Short Sale No

Foreclosure No
REO/Bank Owned No

Interior Features/Amenities

Appliances Dishwasher, Disposal, Refrigerator, Stove

Int. Style Floor Plan - Open

HOA/Condo/Coop Info

Condo/Coop Fee \$522

Amenities Pool - Outdoor, Tennis Courts, Tot Lots/Playground

Information Courtesy of RE/MAX Excellence Realty. Copyright 2021 Bright MLS. Information is believed to be accurate, but should not be relied upon without verification. Accuracy of square footage, lot size and other information is not guaranteed. This website courtesy of Barbara Ciment, Realtor, Long & Foster Real Estate, Inc.



CIMENT & SHIELDS TEAM

Barbara Ciment, Associate Broker



(C) 301-346-9126 (O) 301-424-0900
 barbara@ciment.com www.ciment.com





Front Exterior



Exterior



Exterior 30 min Parking



Exterior Parking 30 min Parking



Register to park for visitors



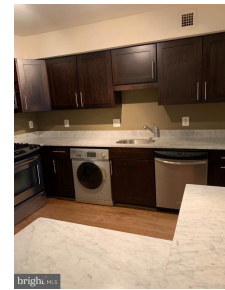
Kitchen



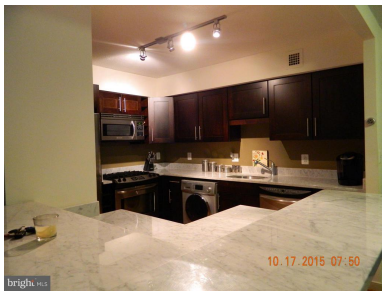
Kitchen



Washer/Dryer



Granite Counter tops



Kitchen



Kitchen



Dining room



CIMENT & SHIELDS TEAM

Barbara Ciment, Associate Broker

LONG & FOSTER REAL ESTATE

(C) 301-346-9126

(O) 301-424-0900

barbara@ciment.com

www.ciment.com





Kitchen



Dining room



Dining room



Kitchen



Living-room



Living-room



Bedroom



Bedroom with 2 spaces closets



Bedroom



Bathroom



CIMENT & SHIELDS TEAM

Barbara Ciment, Associate Broker

LONG & FOSTER REAL ESTATE

(C) 301-346-9126

(O) 301-424-0900

barbara@ciment.com

www.ciment.com

