

## Recent Home Sale: 7307 GLENSIDE DR - \$545,000



**Remarks** Delightful Dutch colonial home set on lush corner lot; you'll love the light modern feel of the spaces including an updated kitchen and recently remodeled lower level. Ample yard with patios and play spaces. Pleasing screened porch. 2 off-street parking spaces. All just steps to Becca Lily park and playgrounds, Sligo Creek hiker-biker trail, shops, restaurants and transit!

Rooms	Total	Upper 1	Lower 1
Bedrooms	4	3	1
Full Baths	2	1	1
Half Baths	0	0	0

### Basic Information

**Address** 7307 GLENSIDE DR  
**City/Town** TAKOMA PARK  
**State** MD  
**Zip Code** 20912  
**County** MONTGOMERY  
**Type** Detached  
**MLS#** MDMC665274  
**Ownership** Fee Simple

**Style** Colonial  
**Adv Subdivision** TAKOMA PARK  
**DOM-Prop** 9  
**Year Built** 1940  
**Beds** 4  
**Baths** 2  
**Lot Size** 8,341  
**Acres** 0

**Tax Living Area** 1,134  
**Levels** 3+  
**Total Fin Sq Ft** 1,584  
**Contract Date** 2019-07-03  
**Close Date** 2019-08-20  
**Close Price** \$545,000  
**Seller Subsidy** \$15,000

### Exterior/Construction Features/Utilities

**Exterior** Brick, Wood Siding  
**Roof** Slate  
**Water Type** Public

**Sewer** Public Sewer  
**Hot Water** Natural Gas  
**Heating** Radiator

**Cooling** Ceiling Fan(s)

### Tax/Legal Information

**Tax ID #** 161303169383  
**Tax Year** 2019  
**Tax Assessment Value** \$451,800  
**Total Taxes** \$6,965

**Legal Subdiv** TAKOMA PARK  
**County Tax** \$4,600  
**City/Town Taxes** \$2,207  
**Lot** 1

**Short Sale** No  
**Foreclosure** No  
**REO/Bank Owned** No

### Interior Features/Amenities

**Appliances** Dishwasher, Dryer - Front Loading, Washer - Front Loading, Washer/Dryer Stacked, Water Heater, Refrigerator, Oven/Range - Electric

**Doors** Storm  
**Windows** Replacement, Double Pane  
**Fireplaces** 1  
**Basement** Windows, Walkout Stairs, Rear Entrance, Interior Access, Fully Finished, Full, Connecting Stairway, Daylight, Partial



**CIMENT & SHIELDS TEAM**

**Barbara Ciment, Associate Broker**



(C) 301-346-9126 (O) 301-424-0900  
 barbara@ciment.com www.ciment.com



## Recent Home Sale: 7307 GLENSIDE DR - \$545,000

### Rooms/Levels/Flooring

<b>Dining Room</b>	Main		<b>Family Room</b>	Main	
<b>Kitchen</b>	Main		<b>Screened Porch</b>	Main	
<b>Bathroom 1</b>	Upper 1	Tile/Brick	<b>Bedroom 1</b>	Upper 1	HardWood
<b>Bedroom 2</b>	Upper 1		<b>Bedroom 3</b>	Upper 1	
<b>Bathroom 2</b>	Lower 1		<b>Bedroom 4</b>	Lower 1	
<b>Den</b>	Lower 1		<b>Laundry</b>	Lower 1	

Information Courtesy of Long & Foster Real Estate, Inc.. Copyright 2021 Bright MLS. Information is believed to be accurate, but should not be relied upon without verification. Accuracy of square footage, lot size and other information is not guaranteed. This website courtesy of Barbara Ciment, Realtor, Long & Foster Real Estate, Inc.



**CIMENT  
& SHIELDS** TEAM

**Barbara Ciment, Associate Broker**



(C) 301-346-9126 (O) 301-424-0900  
[barbara@ciment.com](mailto:barbara@ciment.com) [www.ciment.com](http://www.ciment.com)





Welcome Home!



This stately slate-roofed Dutch colonial...



A living room with fireplace and built-ins,



A living room with fireplace and built-ins,



spacious screened porch,



and nice bright dining room.



Bright white kitchen



Upstairs,



3 bedrooms (bedroom 1,)



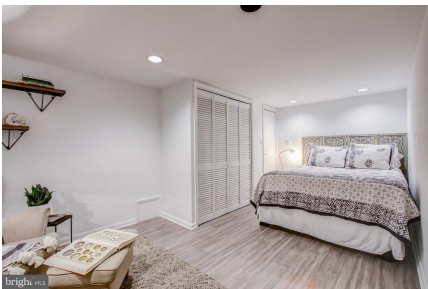
Bedroom 2,



Bedroom 3!



And a hall bath with ceramic tile floor & surround



additional bedroom (#4,)



and another full bathroom!



Plus a handy den/ study.



**CIMENT & SHIELDS TEAM**

**Barbara Ciment, Associate Broker**

**LONG & FOSTER REAL ESTATE**

(C) 301-346-9126

(O) 301-424-0900

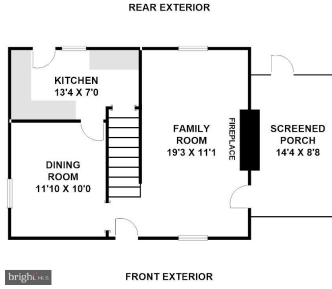
barbara@ciment.com

www.ciment.com

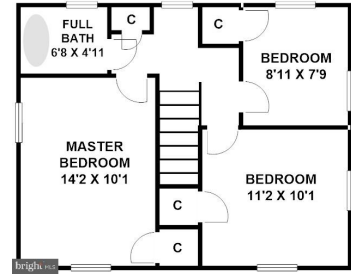




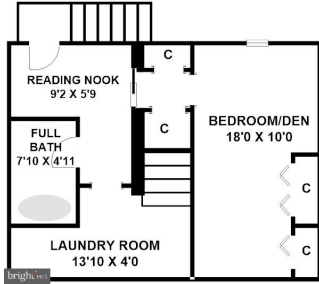
Outside, a flagstone patio takes in the



Main Level Floor Plan



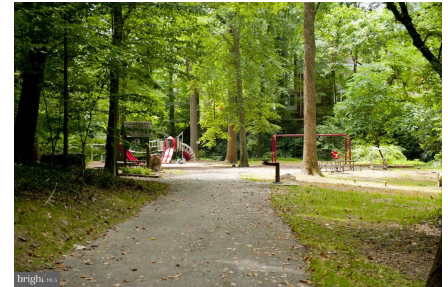
Upper Level Floor Plan



Lower Level Floor Plan



Becca Lilly Playground,



Sligo Creek playgrounds & hiker biker trails,



Sligo Creek Park with hiker-biker trails,



And up the road from all Takoma Park amenities... And up the road from all TkPk amenities & transit!





**CIMENT & SHIELDS TEAM**

**Barbara Ciment, Associate Broker**

**LONG & FOSTER REAL ESTATE**

(C) 301-346-9126 (O) 301-424-0900

barbara@ciment.com www.ciment.com

