

## Recent Home Sale: 6507 KANSAS LN - \$371,000



**Remarks** Spacious rambler located in desirable Takoma Park. Great investor opportunity. Large living/dining room, 2 generous sized bedrooms, country kitchen, enclosed porch, large backyard with shed, unfinished basement, driveway, front/back porch. Sold "as is".

Rooms	Total	Main
Bedrooms	2	2
Full Baths	1	1
Half Baths		

### Basic Information

**Address** 6507 KANSAS LN  
**City/Town** TAKOMA PARK  
**State** MD  
**Zip Code** 20912  
**County** MONTGOMERY  
**Type** Detached  
**MLS#** MDMC671806  
**Ownership** Fee Simple

**Style** Ranch/Rambler  
**Adv Subdivision** TAKOMA PARK  
**DOM-Prop** 141  
**Year Built** 1940  
**Beds** 2  
**Baths** 1  
**Lot Size** 6,427  
**Acres** 0

**Tax Living Area** 960  
**Levels** 2  
**Total Fin Sq Ft** 960  
**Contract Date** 2019-12-11  
**Close Date** 2020-01-16  
**Close Price** \$371,000  
**Seller Subsidy** \$11,130

### Exterior/Construction Features/Utilities

**Exterior** Other  
**Water Type** Public

**Sewer** Public Sewer  
**Heating** Forced Air

**Cooling** Central A/C

### Tax/Legal Information

**Tax ID #** 161303173614  
**Tax Year** 2019  
**Tax Assessment Value** \$429,000  
**Total Taxes** \$7,071

**Legal Subdiv** TAKOMA PARK  
**County Tax** \$4,672  
**City/Town Taxes** \$2,241  
**Lot** 11

**Short Sale** No  
**Foreclosure** No  
**REO/Bank Owned** No

### Interior Features/Amenities

**Appliances** Disposal, Oven/Range - Gas, Refrigerator  
**Basement** Unfinished

Information Courtesy of W F Chesley Real Estate, LLC.. Copyright 2021 Bright MLS. Information is believed to be accurate, but should not be relied upon without verification. Accuracy of square footage, lot size and other information is not guaranteed. This website courtesy of Barbara Ciment, Realtor, Long & Foster Real Estate, Inc.



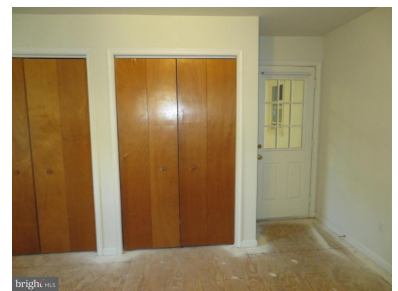
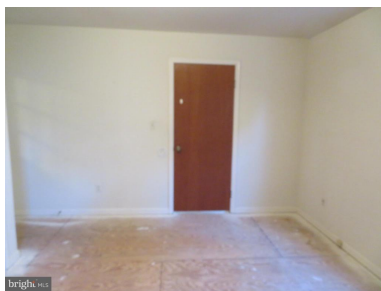
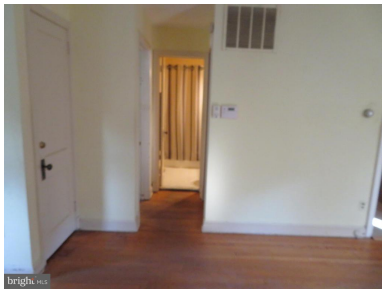
**CIMENT & SHIELDS TEAM**

**Barbara Ciment, Associate Broker**



(C) 301-346-9126 (O) 301-424-0900  
 barbara@ciment.com www.ciment.com





**CIMENT & SHIELDS TEAM**

**Barbara Ciment, Associate Broker**

**LONG & FOSTER REAL ESTATE**

(C) 301-346-9126

(O) 301-424-0900

[barbara@ciment.com](mailto:barbara@ciment.com)

[www.ciment.com](http://www.ciment.com)







CIMENT & SHIELDS TEAM

Barbara Ciment, Associate Broker

LONG & FOSTER REAL ESTATE

(C) 301-346-9126

(O) 301-424-0900

barbara@ciment.com

www.ciment.com





**CIMENT & SHIELDS TEAM**

**Barbara Ciment, Associate Broker**

**LONG & FOSTER**  
REALTOR® REAL ESTATE

(C) 301-346-9126

(O) 301-424-0900

[barbara@ciment.com](mailto:barbara@ciment.com)

[www.ciment.com](http://www.ciment.com)

