

Recent Home Sale: 6427 5TH AVE - \$899,900



Remarks Rare find in Takoma Park: Gorgeous, custom 5-year-young home with 2-car garage with electric car outlet. This home was built with attention to every detail: Custom floor plan with beautiful, open-concept main floor, allows you to cook in your gourmet kitchen while still entertaining family & friends. Thoughtful touches abound like built-in dining nook, two separate offices/dens for study or quiet time. Four generous bedrooms upstairs, window placement that maximizes light & privacy. Retreat to your private owner's suite with spa-like bath. Main floor also features a bonus space that makes a perfect au-pair or in-law suite with its own full bath, kitchenette and entrance. All of this PLUS 2-car garage PLUS add'l parking PLUS next door to Sligo Mill Overlook Community Garden & Park PLUS a mile from Takoma Metro, Busboys & Poets & more. Get ready to see it soon because this one Will. Not. Last.

Rooms	Total	Upper 1	Upper 2
Bedrooms	5	1	4
Full Baths	3	1	2
Half Baths	1	1	

Basic Information

Address 6427 5TH AVE
City/Town TAKOMA PARK
State MD
Zip Code 20912
County MONTGOMERY
Type Detached
MLS# MDMC671264
Ownership Fee Simple

Style Colonial
Adv Subdivision TAKOMA PARK
DOM-Prop 3
Year Built 2014
Beds 5
Baths 3/1
Lot Size 6,427
Acres 0

Tax Living Area 2,556
Levels 3+
Total Fin Sq Ft 2,556
Contract Date 2019-07-27
Close Date 2019-09-06
Close Price \$899,900
Seller Subsidy \$3,000

Exterior/Construction Features/Utilities

Exterior Cement Siding, HardiPlank Type
Water Type Public
Sewer Public Sewer

Heating Forced Air
Cooling Central A/C
Garage Spaces 2.00

Parking Electric Vehicle Charging Station(s)

Tax/Legal Information

Tax ID # 161303665362
Tax Year 2019
Tax Assessment Value \$777,400
Total Taxes \$13,058

Legal Subdiv TAKOMA PARK
County Tax \$8,753
City/Town Taxes \$4,200
Lot 12

Short Sale No
Foreclosure No
REO/Bank Owned No

Interior Features/Amenities

Int. Style Crown Moldings, Floor Plan - Open,
 Kitchen - Gourmet, Kitchen - Island,
 Kitchenette, Primary Bath(s), Recessed
 Lighting, Walk-in Closet(s), Wood Floors

Fireplaces 1
Basement Other, Garage Access
Garage Garage Door Opener



CIMENT & SHIELDS TEAM

Barbara Ciment, Associate Broker



(C) 301-346-9126 (O) 301-424-0900
 barbara@ciment.com www.ciment.com



Recent Home Sale: 6427 5TH AVE - \$899,900

Rooms/Levels/Flooring

Exercise Room	Main	Den	Upper 1
Dining Room	Upper 1	In-Law/auPair/Suite	Upper 1
Kitchen	Upper 1	Library	Upper 1
Living Room	Upper 1	Bathroom 2	Upper 2
Bedroom 2	Upper 2	Bedroom 3	Upper 2
Bedroom 4	Upper 2	Primary Bedroom	Upper 2

Information Courtesy of Redfin Corp. Copyright 2021 Bright MLS. Information is believed to be accurate, but should not be relied upon without verification. Accuracy of square footage, lot size and other information is not guaranteed. This website courtesy of Barbara Ciment, Realtor, Long & Foster Real Estate, Inc.



**CIMENT
& SHIELDS** TEAM

Barbara Ciment, Associate Broker



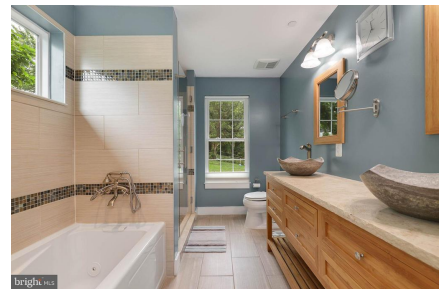
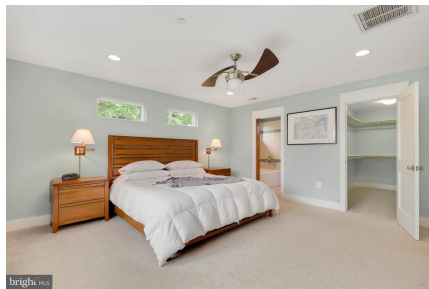
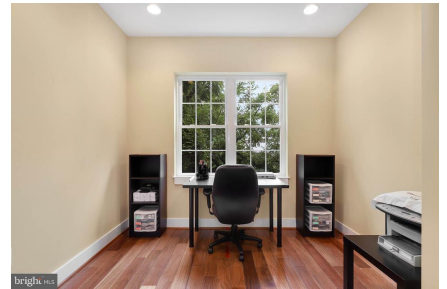
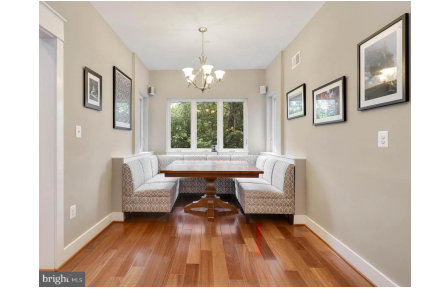
(C) 301-346-9126

(O) 301-424-0900

barbara@ciment.com

www.ciment.com

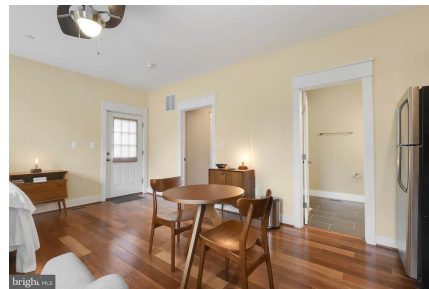
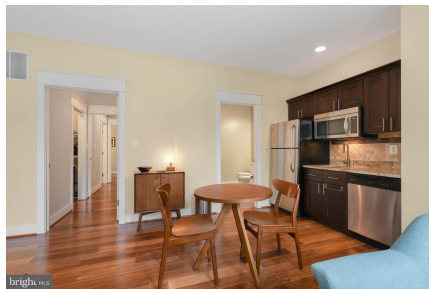
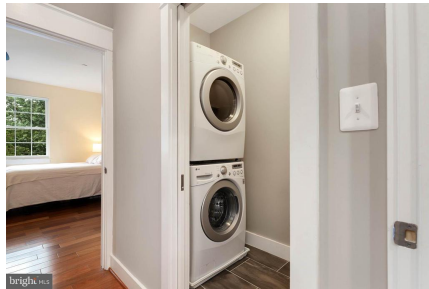
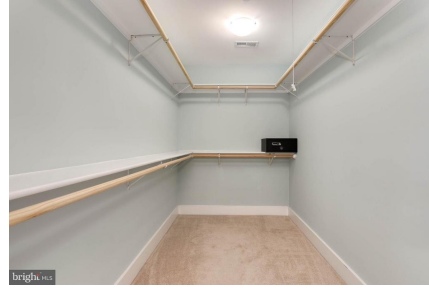




CIMENT & SHIELDS TEAM

Barbara Ciment, Associate Broker
LONG & FOSTER REAL ESTATE
REALTOR® EQUAL HOUSING OPPORTUNITY
(C) 301-346-9126 (O) 301-424-0900
barbara@ciment.com www.ciment.com

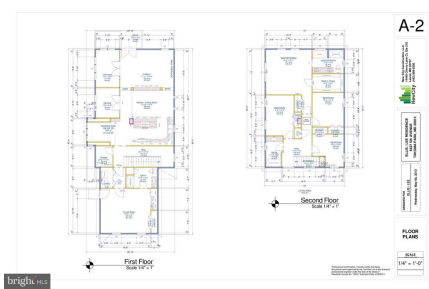
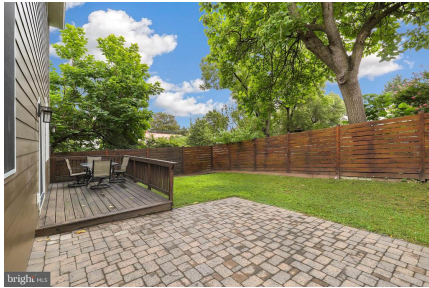
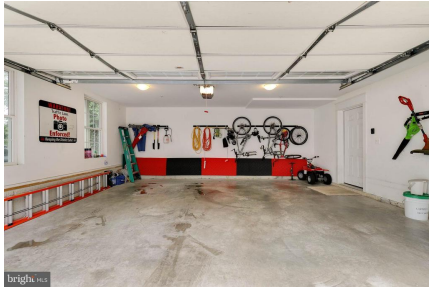
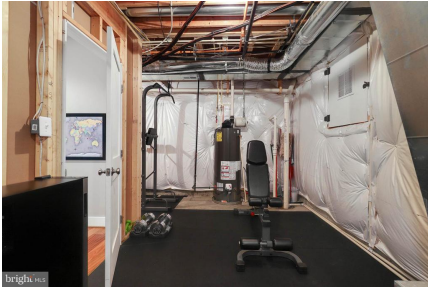




CIMENT & SHIELDS TEAM

Barbara Ciment, Associate Broker
LONG & FOSTER REAL ESTATE
(C) 301-346-9126 (O) 301-424-0900
barbara@ciment.com www.ciment.com





CIMENT & SHIELDS TEAM

Barbara Ciment, Associate Broker

LONG & FOSTER REAL ESTATE

(C) 301-346-9126

(O) 301-424-0900

barbara@ciment.com

www.ciment.com

