

Recent Home Sale: 816 HILLSBORO DR - \$649,000



Remarks Beautiful and unique 5 bedroom, 3.5 bath 4 level split in the heart of Kemp Mill, a subdivision in Silver Spring, MD. Home features 4 bedrooms upstairs with laundry room and full bath. Owner's suite includes walk-in closet and private bathroom. Large Family room on entry level with vaulted ceilings. Awesome open concept kitchen and dining area. Addition allows for great entertaining. Back door to yard and slider to large open-air deck with pergola. Main level bedroom and full bath. Finished walkout lower level with half bath and kitchenette with countertop and sink makes a great play area or office. Garage converted into multipurpose indoor space. Fabulous home or investment property: home is leased through the end of July 2021 for \$3k/month plus utilities! Home in highly sought after location. Just a few blocks from public transportation, a full service shopping center, houses of worship, pool membership available. Several parks in neighborhood. Perfect commuter home: convenient to Red line Wheaton Metro; 495, 270, ICC and more. Must wear masks and take off shoes when inside of home

Rooms	Total	Upper 1	Lower 1	Lower 2
Bedrooms	5	4	1	0
Full Baths	3	2	1	0
Half Baths	1			1

Basic Information

Address 816 HILLSBORO DR
City/Town SILVER SPRING
State MD
Zip Code 20902
County MONTGOMERY
Type Detached
MLS# MDMC729496
Ownership Fee Simple

Style Mid-Century Modern, Split Level
Adv Subdivision KEMP MILL ESTATES
DOM-Prop 18
Year Built 1957
Beds 5
Baths 3/1
Lot Size 7,287
Acres 0

Tax Living Area 2,499
Levels 4
Total Fin Sq Ft 2,499
Contract Date 2020-11-11
Close Date 2020-12-22
Close Price \$649,000
Seller Subsidy \$2,000

Exterior/Construction Features/Utilities

Exterior Combination
Water Type Public
Sewer Public Sewer

Hot Water Natural Gas
Heating Forced Air, Humidifier
Cooling Central A/C

Porch/Patio Patio(s)
Other Features Bump-outs, Play Area

Tax/Legal Information

Tax ID # 161301324972
Tax Year 2020
Tax Assessment Value \$429,900
Total Taxes \$5,079

Legal Subdiv KEMP MILL ESTATES
County Tax \$4,558
Lot 16
Short Sale No

Foreclosure No
REO/Bank Owned No

Interior Features/Amenities

Appliances Built-In Microwave, Dishwasher, Dryer, Washer, Oven - Double, Refrigerator

Int. Style Floor Plan - Open, Formal/Separate Dining Room, Recessed Lighting, Walk-in Closet(s), Store/Office, Primary Bath(s), Kitchen - Gourmet

Basement Other, Connecting Stairway, Fully Finished, Improved, Heated, Interior Access, Side Entrance



CIMENT & SHIELDS TEAM

Barbara Ciment, Associate Broker



(C) 301-346-9126 (O) 301-424-0900
 barbara@ciment.com www.ciment.com



Recent Home Sale: 816 HILLSBORO DR - \$649,000

Rooms/Levels/Flooring

Family Room	Main	Laundry	Upper 1
Dining Room	Lower 1	Kitchen	Lower 1
Living Room	Lower 1	Office	Lower 2

Information Courtesy of RE/MAX Realty Group. Copyright 2021 Bright MLS. Information is believed to be accurate, but should not be relied upon without verification. Accuracy of square footage, lot size and other information is not guaranteed. This website courtesy of Barbara Ciment, Realtor, Long & Foster Real Estate, Inc.



Barbara Ciment, Associate Broker



(C) 301-346-9126

(O) 301-424-0900

barbara@ciment.com

www.ciment.com





Beautiful, modern home in Kemp Mill



Plenty of parking space in driveway plus street.



Spacious family room with natural light.



family room features wood floors, high ceiling



Natural light flooding into family room



Updated kitchen



Lots of cabinet space, double oven, microwave/



Views of kitchen, living room, nature from dining.



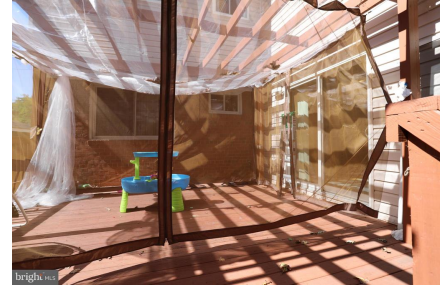
View of kitchen, dining room from living room



CIMENT & SHIELDS TEAM

Barbara Ciment, Associate Broker
LONG & FOSTER REAL ESTATE
(C) 301-346-9126 (O) 301-424-0900
barbara@ciment.com www.ciment.com





full bath for main level bedroom

Pergola adjacent to living room.



Huge owner suite



Custom walk in closet in owner suite



CIMENT & SHIELDS TEAM

Barbara Ciment, Associate Broker

LONG & FOSTER REAL ESTATE

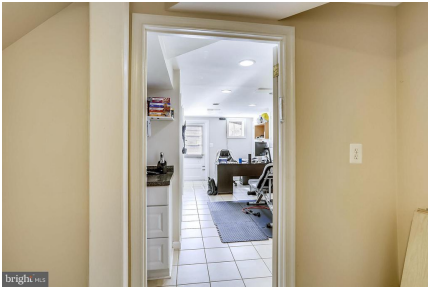
(C) 301-346-9126

(O) 301-424-0900

barbara@ciment.com

www.ciment.com



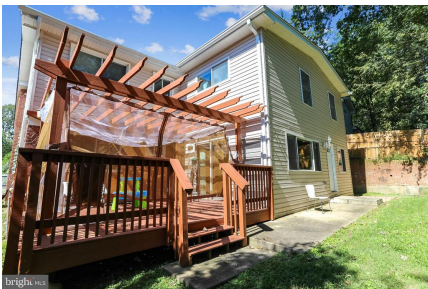


Custom w/d on upper level.



Office with custom powder room, lighting/

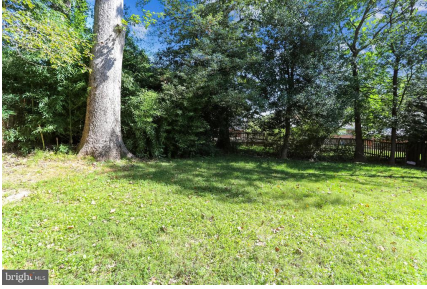
Custom walkout /exit from office



CIMENT & SHIELDS TEAM

Barbara Ciment, Associate Broker
LONG & FOSTER REAL ESTATE
REALTOR® EQUAL HOUSING OPPORTUNITY
(C) 301-346-9126 (O) 301-424-0900
barbara@ciment.com www.ciment.com





Copyright © TruPlace, Inc.



Copyright © TruPlace, Inc.



Copyright © TruPlace, Inc.



Copyright © TruPlace, Inc.



CIMENT & SHIELDS TEAM

Barbara Ciment, Associate Broker



(C) 301-346-9126

(O) 301-424-0900

barbara@ciment.com

www.ciment.com

