

Recent Home Sale: 2317 HERMITAGE AVE - \$930,000



Remarks Magnificent living! One of the largest most amazing homes in the zipcode offering over 8,000 sq. ft., this majestic brick front colonial makes a big statement, circular driveway, every room is well appointed with the finest details. Stunning stone masonry, perfectly placed landscaping, palladian windows and two-story arched entryway, this property instantly impresses. Stately Double entry doors transport you into the two story open foyer & glamorous curved staircase with wrought iron spindles. Impressive richly stained millwork anchors one room to the next. Tigerwood Brazilian Cherry hardwood floors, recessed lighting, and neutral paint flow throughout the main level. Formal dining room with arched entrances, chandelier framed with molding, recessed lighting & built-in cabinet/bar. Living room with Coffered ceiling, flooded with natural light from the sunroom through arched cutouts, & fine art feature. Sunroom off of living room and kitchen with molding framed skylights and gorgeous archways. Large Eat-In kitchen - gather around the oversized center island with food stored in your dual Fridges and prepared in your double ovens, stainless steel appliances, Dentil crown molding lines the Ivory white cabinets with contrasting black granite countertops. Second story has hardwood floors throughout complimented by wood crown molding framing the hall and Owner s Suite. Sit back and relax in your expansive Owner s Suite with french doors, tray ceiling, plentiful space for a separate seating area, and your own balcony. Complete with a closet Room with a window, center island, built-in shelving, and Cedar shiplap. Owner s En-Suite with double vanity, white cabinets & built-in storage, large corner standing shower with gorgeous tilework, and raised spa-like soaking tub. 3 additional bedrooms, each with their own bathroom and walk-in closets. Built-ins in one of the bedrooms with deskpace for function as an office. 1800 sq ft Finished space in basement allows for its own separate living space with a bedroom, full bathroom, kitchen/wetbar, game area and gym. Continue your luxury living into the backyard with a large deck, patio, Flat yard, fence along the left side and tree lined & shed. Red Line accessible, close to downtown Silver Spring, Brookside Gardens & Equestrian Center, 495 access.

Rooms	Total	Main	Upper 1	Lower 1
Bedrooms	5		4	1
Full Baths	5		4	1
Half Baths	1	1		

Basic Information

Address 2317 HERMITAGE AVE
City/Town SILVER SPRING
State MD
Zip Code 20902
County MONTGOMERY
Type Detached
MLS# MDMC706540
Ownership Fee Simple

Style Colonial
Adv Subdivision ARCOLA
DOM-Prop 9
Year Built 2009
Beds 5
Baths 5/1
Lot Size 23,455
Acres 1

Tax Living Area 7,152
Levels 3
Total Fin Sq Ft 7,152
Contract Date 2020-05-22
Close Date 2020-06-26
Close Price \$930,000

Exterior/Construction Features/Utilities

Exterior Brick, Vinyl Siding
Roof Asphalt
Water Type Public

Sewer Public Sewer
Heating Forced Air, Central
Cooling Central A/C

Garage Spaces 3.00
Parking Circular Driveway, Paved Driveway



CIMENT & SHIELDS TEAM

Barbara Ciment, Associate Broker



(C) 301-346-9126 (O) 301-424-0900
 barbara@ciment.com www.ciment.com



Recent Home Sale: 2317 HERMITAGE AVE - \$930,000

Tax/Legal Information

Tax ID # 161303225296
Tax Year 2019
Tax Assessment Value \$934,800
Total Taxes \$12,289

Legal Subdiv ARCOLA
County Tax \$11,110
Lot 21
Short Sale No

Foreclosure No
REO/Bank Owned No

Interior Features/Amenities

Basement Fully Finished

Garage Garage - Side Entry

Information Courtesy of Long & Foster Real Estate, Inc.. Copyright 2021 Bright MLS. Information is believed to be accurate, but should not be relied upon without verification. Accuracy of square footage, lot size and other information is not guaranteed. This website courtesy of Barbara Ciment, Realtor, Long & Foster Real Estate, Inc.

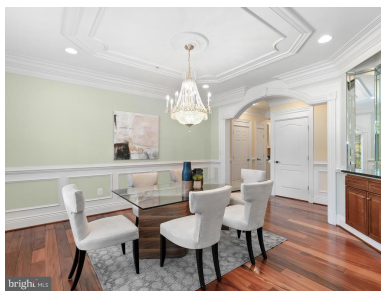
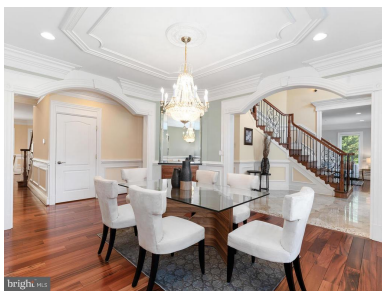
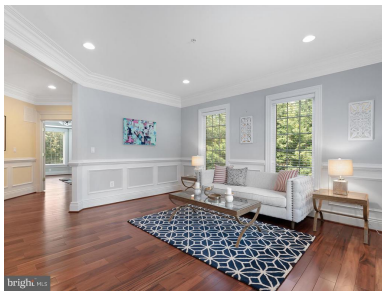
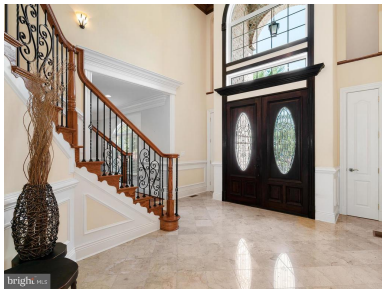


Barbara Ciment, Associate Broker



(C) 301-346-9126 (O) 301-424-0900
barbara@ciment.com www.ciment.com





CIMENT & SHIELDS TEAM

Barbara Ciment, Associate Broker

LONG & FOSTER REAL ESTATE

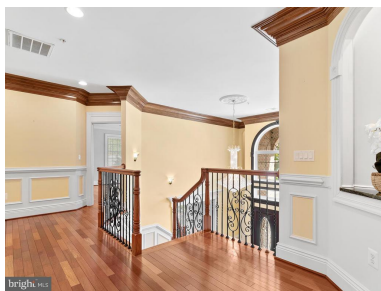
(C) 301-346-9126

(O) 301-424-0900

barbara@ciment.com

www.ciment.com





CIMENT & SHIELDS TEAM

Barbara Ciment, Associate Broker

LONG & FOSTER REAL ESTATE

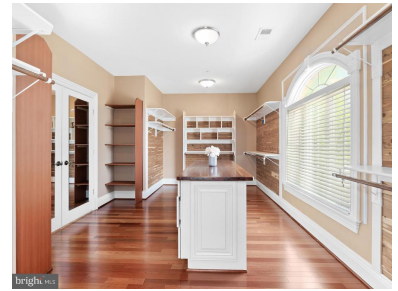
(C) 301-346-9126

(O) 301-424-0900

barbara@ciment.com

www.ciment.com





CIMENT & SHIELDS TEAM

Barbara Ciment, Associate Broker

LONG & FOSTER REAL ESTATE

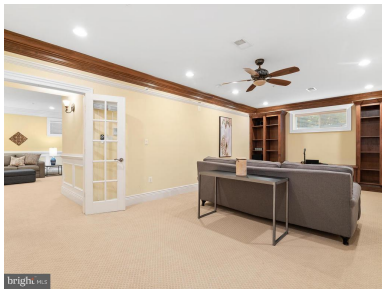
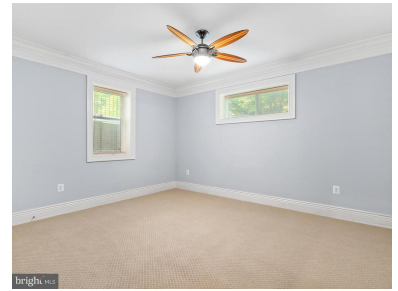
(C) 301-346-9126

(O) 301-424-0900

barbara@ciment.com

www.ciment.com





CIMENT & SHIELDS TEAM

Barbara Ciment, Associate Broker

LONG & FOSTER REAL ESTATE

(C) 301-346-9126

(O) 301-424-0900

barbara@ciment.com

www.ciment.com





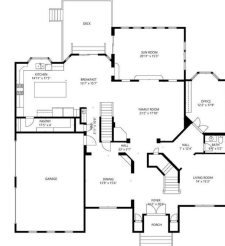
brighn.hls

NOT TO SCALE
DIMENSIONS ARE APPROXIMATE
SEE AND COMPARE TO THE ARCHITECTURAL, ACTUAL ANY



brighn.hls

NOT TO SCALE
DIMENSIONS ARE APPROXIMATE
SEE AND COMPARE TO THE ARCHITECTURAL, ACTUAL ANY



brighn.hls

NOT TO SCALE
DIMENSIONS ARE APPROXIMATE
SEE AND COMPARE TO THE ARCHITECTURAL, ACTUAL ANY



CIMENT & SHIELDS TEAM

Barbara Ciment, Associate Broker

LONG & FOSTER REAL ESTATE

(C) 301-346-9126

(O) 301-424-0900

barbara@ciment.com

www.ciment.com

