

Recent Home Sale: 15115 INTERLACHEN DR #3-811 - \$137,000



Remarks Welcome to life at The Greens II, located in the heart of Leisure World. Its central location makes for convenient workouts at the Fitness Center in Club House II. Manicured landscapes and meandering walking trails are throughout the 610-acre community. Leisure World of Maryland caters to homeowners aged 55 and older. Residence 811 in Building Three offers a superb layout. This corner condo features a private enclosed terrace overlooking the 18-hole championship golf course and large pond. Natural light streams through windows in nearly every room. The interior exudes modern elegance with open-plan foyer, living and dining areas. The newer kitchen features granite countertops, a rare kitchen window and room for a table. The spacious bedroom with office nook, boasts both a Walk-In Closet and a deep wall closet. The newer bathroom includes a bathtub with shower. The in-unit washer/dryer, as well as one garage parking space, provide the ultimate in convenience. Freshly painted (2019), this move-in ready gem is available now to be your next home.

Rooms	Total	Main
Bedrooms	1	1
Full Baths	1	1
Half Baths		

Basic Information

Address 15115 INTERLACHEN DR #3-811
City/Town SILVER SPRING
State MD
Zip Code 20906
County MONTGOMERY
Type Unit/Flat/Apartment
MLS# MDMC666966
Ownership Condominium

Style Contemporary
Adv Subdivision GREENS AT LEISURE WORLD
DOM-Prop 7
Year Built 1984
Beds 1
Baths 1
Lot Size 945

Acres 0
Tax Living Area 945
Levels 1
Total Fin Sq Ft 945
Contract Date 2019-07-03
Close Date 2019-07-31
Close Price \$137,000
Seller Subsidy \$2,740

Exterior/Construction Features/Utilities

Exterior Brick
Water Type Public

Sewer Public Sewer
Heating Forced Air

Cooling Central A/C
Garage Spaces 1.00

Tax/Legal Information

Tax ID # 161302683343
Tax Year 2019
Tax Assessment Value \$116,500
Total Taxes \$1,406

Legal Subdiv GREENS AT LEISURE WORLD
County Tax \$1,358
Lot EISURE
Short Sale No
Foreclosure No
REO/Bank Owned No

Interior Features/Amenities

Appliances Built-In Microwave, Dishwasher, Disposal, Oven/Range - Electric, Refrigerator, Washer/Dryer Stacked

Int. Style Carpet, Ceiling Fan(s), Combination Dining/Living, Floor Plan - Open, Kitchen - Table Space, Sprinkler System, Tub Shower, Upgraded Countertops, Walk-in Closet(s), Window Treatments

Security 24 hour security
Garage Underground



CIMENT & SHIELDS TEAM

Barbara Ciment, Associate Broker



(C) 301-346-9126 (O) 301-424-0900
 barbara@ciment.com www.ciment.com



Recent Home Sale: 15115 INTERLACHEN DR #3-811 - \$137,000

HOA/Condo/Coop Info

Condo/Coop Fee \$637
Other Fees 350.00

Amenities Club House, Common Grounds, Community Center, Elevator, Exercise Room, Fitness Center, Gated Community, Golf Club, Golf Course, Jog/Walk Path, Lake, Party Room, Pool - Indoor, Pool - Outdoor, Recreational Center, Retirement Community, Security, Transportation Service, Tennis Courts

Project Name GREENS AT LEISUR

Information Courtesy of Coldwell Banker Realty. Copyright 2021 Bright MLS. Information is believed to be accurate, but should not be relied upon without verification. Accuracy of square footage, lot size and other information is not guaranteed. This website courtesy of Barbara Ciment, Realtor, Long & Foster Real Estate, Inc.



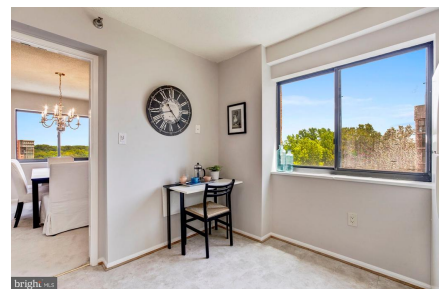
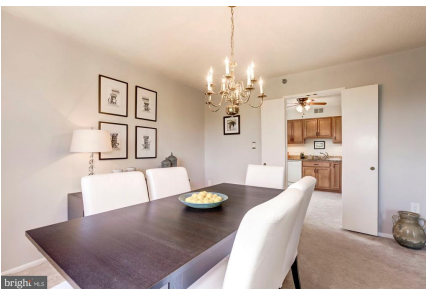
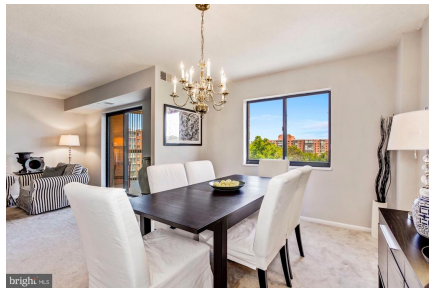
CIMENT & SHIELDS TEAM

Barbara Ciment, Associate Broker

LONG & FOSTER
REALTOR® REAL ESTATE

(C) 301-346-9126 (O) 301-424-0900
barbara@ciment.com www.ciment.com





CIMENT & SHIELDS TEAM

Barbara Ciment, Associate Broker

LONG & FOSTER REAL ESTATE

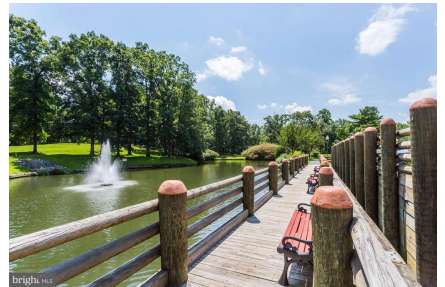
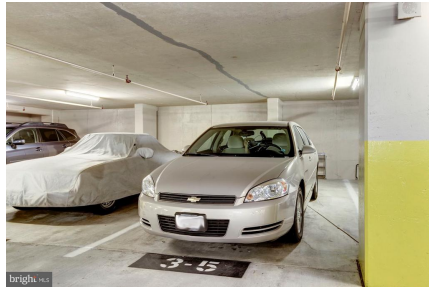
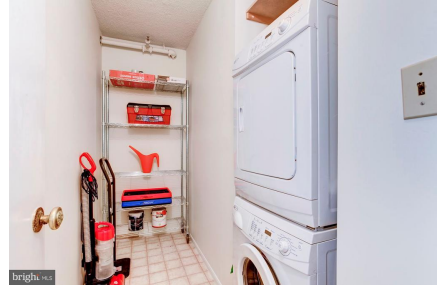
(C) 301-346-9126

(O) 301-424-0900

barbara@ciment.com

www.ciment.com





CIMENT & SHIELDS TEAM

Barbara Ciment, Associate Broker

LONG & FOSTER REAL ESTATE

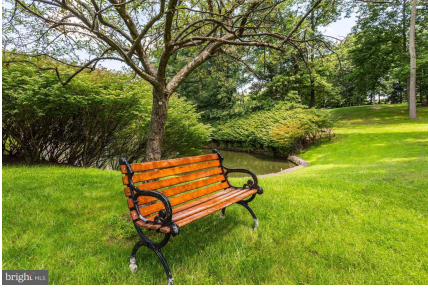
(C) 301-346-9126

(O) 301-424-0900

barbara@ciment.com

www.ciment.com





CIMENT & SHIELDS TEAM

Barbara Ciment, Associate Broker

LONG & FOSTER REAL ESTATE

(C) 301-346-9126

(O) 301-424-0900

barbara@ciment.com

www.ciment.com

