

# Recent Home Sale: 15107 INTERLACHEN DR #2-218 - \$289,900



**Remarks** Do not miss your opportunity to own this incredible large, 2 bedroom, 2 bath, renovated kitchen with new cabinets and stainless appliances, den overlooking the golf course 7th hole, from enclosed balcony with ceiling fan. The interior has renovated hall full bath with custom shower, stainless appliances and upgraded hardwood flooring. Exterior features include very large private storage room (approx 10 by 12) with electric plugs and lighting, garage space includes Electric vehicle charging station, current owner uses for their electric car. Parking space # 2-81 with electric Storage room 8Call agent with questions

Rooms	Total	Main
Bedrooms	2	2
Full Baths	2	2
Half Baths		

## Basic Information

**Address** 15107 INTERLACHEN DR #2-218  
**City/Town** SILVER SPRING  
**State** MD  
**Zip Code** 20906  
**County** MONTGOMERY  
**Type** Unit/Flat/Apartment  
**MLS#** MDMC733980

**Ownership** Condominium  
**Style** Traditional  
**Adv Subdivision** LEISURE WORLD  
**DOM-Prop** 33  
**Year Built** 1984  
**Beds** 2  
**Baths** 2

**Tax Living Area** 1,520  
**Levels** 1  
**Total Fin Sq Ft** 1,520  
**Contract Date** 2020-12-14  
**Close Date** 2021-02-12  
**Close Price** \$289,900  
**Seller Subsidy** \$12,500

## Exterior/Construction Features/Utilities

**Exterior** Brick  
**Water Type** Public  
**Sewer** Public Sewer  
**Hot Water** Natural Gas

**Heating** Central, Forced Air  
**Cooling** Central A/C, Ceiling Fan(s)  
**Garage Spaces** 1.00  
**Parking** Assigned, Electric Vehicle Charging Station(s), Lighted Parking

**# Spaces** 1

## Tax/Legal Information

**Tax ID #** 161302477073  
**Tax Year** 2020  
**Tax Assessment Value** \$276,500  
**Total Taxes** \$2,931

**Legal Subdiv** THE GRNS AT LEISURE WRLD  
**County Tax** \$2,883  
**Lot** EISURE  
**Short Sale** No  
**Foreclosure** No  
**REO/Bank Owned** No

## Interior Features/Amenities

**Appliances** Built-In Range, Cooktop, Dishwasher, Disposal, Dryer, Dryer - Electric, Dryer - Front Loading, Icemaker, Microwave, Oven - Single, Oven/Range - Electric, Refrigerator, Stainless Steel Appliances, Washer

**Int. Style** Combination Dining/Living, Floor Plan - Traditional  
**Garage** Garage - Side Entry, Inside Access

## Rooms/Levels/Flooring

**Den** Main  
**Kitchen** Main  
**Dining Room** Main



**CIMENT & SHIELDS TEAM**

**Barbara Ciment, Associate Broker**



(C) 301-346-9126 (O) 301-424-0900  
 barbara@ciment.com www.ciment.com



## Recent Home Sale: 15107 INTERLACHEN DR #2-218 - \$289,900

### HOA/Condo/Coop Info

**HOA Fee** \$0

**Condo/Coop Fee** \$882

**Amenities** Art Studio, Bank / Banking On-site, Bar/Lounge, Billiard Room, Cable, Club House, Common Grounds, Community Center, Elevator, Exercise Room, Extra Storage, Fitness Center, Gated Community, Golf Course, Golf Course Membership Available, Jog/Walk Path, Library, Meeting Room, Newspaper Service, Party Room, Picnic Area, Pool - Indoor, Pool - Outdoor, Recreational Center, Reserved/Assigned Parking, Retirement Community, Security, Shuffleboard, Tennis Courts, Transportation Service

Information Courtesy of Weichert, REALTORS. Copyright 2021 Bright MLS. Information is believed to be accurate, but should not be relied upon without verification. Accuracy of square footage, lot size and other information is not guaranteed. This website courtesy of Barbara Ciment, Realtor, Long & Foster Real Estate, Inc.



**CIMENT  
& SHIELDS** TEAM

**Barbara Ciment, Associate Broker**



(C) 301-346-9126

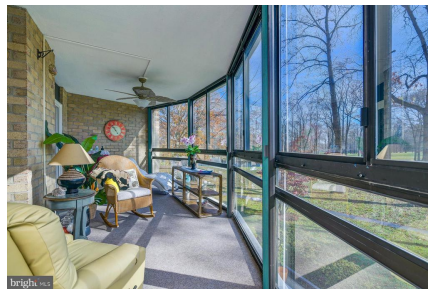
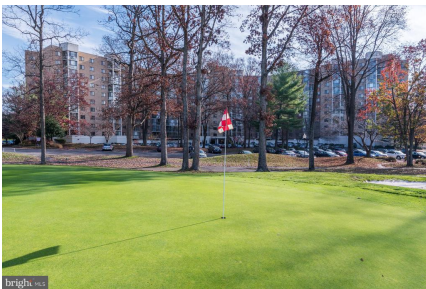
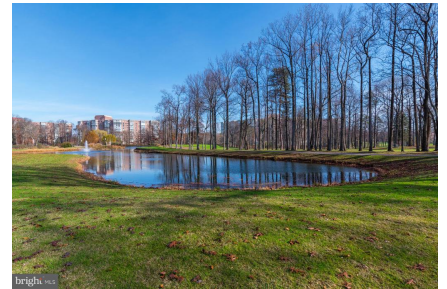
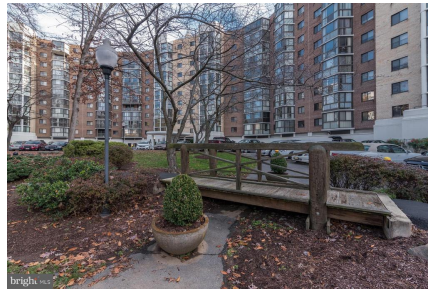
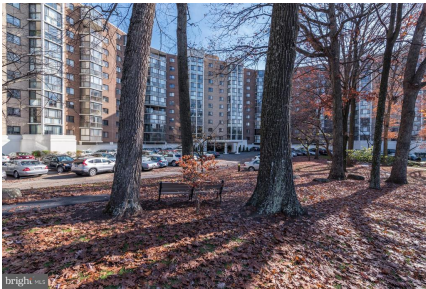
(O) 301-424-0900

[barbara@ciment.com](mailto:barbara@ciment.com)

[www.ciment.com](http://www.ciment.com)







**CIMENT & SHIELDS TEAM**

**Barbara Ciment, Associate Broker**  
**LONG & FOSTER REAL ESTATE**  
REALTOR® EQUAL HOUSING OPPORTUNITY  
(C) 301-346-9126 (O) 301-424-0900  
[barbara@ciment.com](mailto:barbara@ciment.com) [www.ciment.com](http://www.ciment.com)





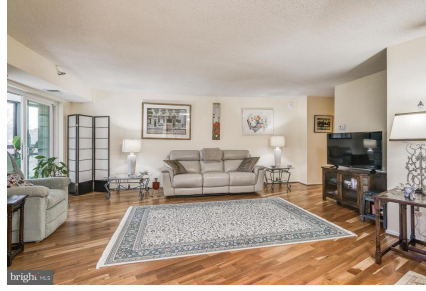


**CIMENT & SHIELDS TEAM**

**Barbara Ciment, Associate Broker**  
**LONG & FOSTER REAL ESTATE**  
REALTOR® EQUAL HOUSING OPPORTUNITY  
(C) 301-346-9126 (O) 301-424-0900  
[barbara@ciment.com](mailto:barbara@ciment.com) [www.ciment.com](http://www.ciment.com)







**CIMENT & SHIELDS TEAM**

**Barbara Ciment, Associate Broker**

**LONG & FOSTER REAL ESTATE**

(C) 301-346-9126

(O) 301-424-0900

[barbara@ciment.com](mailto:barbara@ciment.com)

[www.ciment.com](http://www.ciment.com)





**CIMENT & SHIELDS TEAM**

**Barbara Ciment, Associate Broker**

**LONG & FOSTER**  
REALTOR® REAL ESTATE

(C) 301-346-9126

(O) 301-424-0900

[barbara@ciment.com](mailto:barbara@ciment.com)

[www.ciment.com](http://www.ciment.com)

