

## Recent Home Sale: 15107 INTERLACHEN DR #2-208 - \$230,000



**Remarks** Move-in Ready - Sunny and spacious 2 bedroom, 2 bath condo, inviting open floor plan dining and living rooms opens onto enclosed sunroom where you can watch the season change with outstanding views over the Golf course and landscaped grounds of Leisure World. Updated kitchen with cabinets, granite countertops, backsplash, stainless-steel appliances, and table space. Owner's BR with walk-in closet, separate dressing area with vanity and extra closets. Second BR with full bath and two closets. This condo is located on the second floor with easy access to both the elevator and the stairs. The unit includes a washer/dryer, One assigned parking space in the garage, access to additional storage and the unit has been freshly painted. Leisure World is a gated community for persons over the age of 55. It offers a maintenance-free lifestyle in a convenient location and picturesque environment. Residents enjoy a variety of services and countless amenities in a pet-friendly community with 24-hour security set on 610-acre beautifully landscaped grounds. The resort-style amenities and services including two clubhouses, three restaurants, an 18-hole championship golf course, a fitness centre, pools, tennis courts, and MedStar Health medical centre. Other services include community transportation, maintenance, and health care services There is no need to worry about mowing your lawn or shovelling snow, freeing up more time do what you love.

Rooms	Total	Main
Bedrooms	2	2
Full Baths	2	2
Half Baths		

### Basic Information

**Address** 15107 INTERLACHEN DR #2-208  
**City/Town** SILVER SPRING  
**State** MD  
**Zip Code** 20906  
**County** MONTGOMERY  
**Type** Unit/Flat/Apartment  
**MLS#** MDMC2023362

**Ownership** Condominium  
**Style** Traditional  
**Adv Subdivision** GREENS AT LEISURE WORLD  
**DOM-Prop** 11  
**Year Built** 1984  
**Beds** 2

**Baths** 2  
**Tax Living Area** 1,120  
**Levels** 1  
**Total Fin Sq Ft** 1,120  
**Contract Date** 2021-12-09  
**Close Date** 2021-12-31  
**Close Price** \$230,000

### Exterior/Construction Features/Utilities

**Exterior** Brick  
**Water Type** Public  
**Sewer** Public Sewer

**Hot Water** Electric  
**Heating** Forced Air  
**Cooling** Central A/C

**Garage Spaces** 1.00  
**Parking** Assigned  
**# Spaces** 1

### Tax/Legal Information

**Tax ID #** 161302476980  
**Tax Year** 2021  
**Tax Assessment Value** \$180,000  
**Total Taxes** \$2,036

**Legal Subdiv** THE GRNS AT LEISURE WRLD  
**County Tax** \$1,985  
**City/Town Taxes** \$0  
**Short Sale** No  
**Foreclosure** No  
**REO/Bank Owned** No

### Interior Features/Amenities

**Appliances** Built-In Microwave, Dishwasher, Disposal, Dryer, Exhaust Fan, Refrigerator, Stainless Steel Appliances, Washer

**Garage** Inside Access, Underground, Basement Garage



**CIMENT & SHIELDS TEAM**

**Barbara Ciment, Associate Broker**



**(C) 301-346-9126 (O) 301-424-0900**  
**barbara@ciment.com www.ciment.com**



# Recent Home Sale: 15107 INTERLACHEN DR #2-208 - \$230,000

## Rooms/Levels/Flooring

<b>Bathroom 2</b>	Main	Laminate	<b>Bedroom 2</b>	Main	Carpet
<b>Dining Room</b>	Main	Carpet	<b>Kitchen</b>	Main	
<b>Living Room</b>	Main	Carpet	<b>Primary Bedroom</b>	Main	Carpet

## HOA/Condo/Coop Info

**Condo/Coop Fee** \$722

**Amenities** Community Center, Common Grounds, Elevator, Extra Storage, Gated Community, Golf Course, Golf Course Membership Available, Pool - Outdoor, Retirement Community

Information Courtesy of Compass. Copyright 2021 Bright MLS. Information is believed to be accurate, but should not be relied upon without verification. Accuracy of square footage, lot size and other information is not guaranteed. This website courtesy of Barbara Ciment, Realtor, Long & Foster Real Estate, Inc.



**CIMENT & SHIELDS TEAM**

**Barbara Ciment, Associate Broker**

**LONG & FOSTER**  
REALTOR® REAL ESTATE

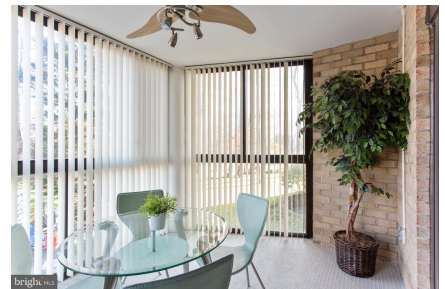
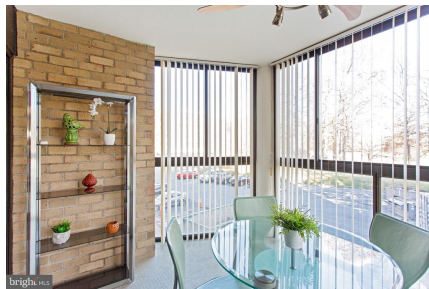
(C) 301-346-9126

(O) 301-424-0900

[barbara@ciment.com](mailto:barbara@ciment.com)

[www.ciment.com](http://www.ciment.com)





**CIMENT & SHIELDS TEAM**

**Barbara Ciment, Associate Broker**

**LONG & FOSTER REAL ESTATE**

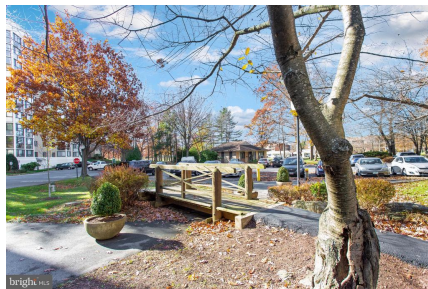
(C) 301-346-9126

(O) 301-424-0900

barbara@ciment.com

www.ciment.com





**CIMENT & SHIELDS TEAM**

**Barbara Ciment, Associate Broker**  
**LONG & FOSTER REAL ESTATE**  
REALTOR® EQUAL HOUSING OPPORTUNITY  
(C) 301-346-9126 (O) 301-424-0900  
[barbara@ciment.com](mailto:barbara@ciment.com) [www.ciment.com](http://www.ciment.com)





**CIMENT  
& SHIELDS**  **TEAM**

**Barbara Ciment, Associate Broker**

 **LONG & FOSTER**  
REALTOR® REAL ESTATE 

(C) 301-346-9126

(O) 301-424-0900

[barbara@ciment.com](mailto:barbara@ciment.com)

[www.ciment.com](http://www.ciment.com)

