

Recent Home Sale: 15100 INTERLACHEN DR #4-820 - \$170,000



Remarks Beautiful condo, newer kitchen, fresh painted, brand new carpet, lots of closet space! Come to see this beautiful condo!! Beautiful view to enjoy from your balcony!! This can be your home Enjoy all the wonderful Leisure World amenities including: 2 clubhouses, restaurants, swimming pools, fitness center, 18-hole golf course, bus transportation and lots more. Walking distant to the grocery store, banks, restaurants!!

Rooms	Total	Main
Bedrooms	2	2
Full Baths	2	2
Half Baths		

Basic Information

Address 15100 INTERLACHEN DR #4-820
City/Town SILVER SPRING
State MD
Zip Code 20906
County MONTGOMERY
Type Unit/Flat/Apartment
MLS# MDMC736146

Ownership Condominium
Style Traditional
Adv Subdivision GREENS AT LEISURE WORLD
DOM-Prop 47
Year Built 1984
Beds 2

Baths 2
Tax Living Area 980
Levels 1
Total Fin Sq Ft 980
Contract Date 2021-03-04
Close Date 2021-04-06
Close Price \$170,000

Exterior/Construction Features/Utilities

Exterior Brick, Concrete
Water Type Public
Sewer Public Sewer

Hot Water Electric
Heating Forced Air
Cooling Central A/C

Porch/Patio Enclosed, Balcony
Other Features BBQ Grill, Fire Escape, Tennis Court(s)

Tax/Legal Information

Tax ID # 161302764930
Tax Year 2021
Tax Assessment Value \$145,000

Total Taxes \$1,426
Legal Subdiv GREENS AT LEISURE WORLD
County Tax \$1,378

Short Sale No
Foreclosure No
REO/Bank Owned No

Interior Features/Amenities

Appliances Built-In Microwave, Dishwasher, Disposal, Dryer - Electric, ENERGY STAR Dishwasher, Icemaker, Oven - Single, Refrigerator, Stove
Int. Style Carpet, Combination Dining/Living, Walk-in Closet(s)

Doors Insulated
Windows Energy Efficient
Wall/Ceiling Dry Wall
Security 24 hour security, Carbon Monoxide Detector(s), Intercom, Security Gate, Smoke Detector

TV/Cable Cable TV, Water Available, Electric Available, Phone Available

HOA/Condo/Coop Info

Condo/Coop Fee \$693

Amenities Cable, Club House, Community Center, Exercise Room, Elevator, Fencing, Gated Community, Golf Course, Library

Project Name GREENS AT LEISURE WORLD

Information Courtesy of Weichert, REALTORS. Copyright 2021 Bright MLS. Information is believed to be accurate, but should not be relied upon without verification. Accuracy of square footage, lot size and other information is not guaranteed. This website courtesy of Barbara Ciment, Realtor, Long & Foster Real Estate, Inc.



CIMENT & SHIELDS TEAM

Barbara Ciment, Associate Broker



(C) 301-346-9126 (O) 301-424-0900
 barbara@ciment.com www.ciment.com





Building Entrance



View of the Building



Condo Entrance



Dining Area



Living room Area



Dining Room



Living Room



Newer Kitchen!



Kitchen



Kitchen



Pantry!



Beautiful view from balcony!



CIMENT & SHIELDS TEAM

Barbara Ciment, Associate Broker

LONG & FOSTER REAL ESTATE

(C) 301-346-9126

(O) 301-424-0900

barbara@ciment.com

www.ciment.com





Master Bedroom

Master Bedroom



Master Bedroom with a lot of closet space!!

Master Bedroom!



Closet Master Bedroom!



Closet Master Bedroom!



Closet Master Bedroom



Second Bedroom!



Second Bedroom!



CIMENT & SHIELDS TEAM

Barbara Ciment, Associate Broker

LONG & FOSTER REAL ESTATE

(C) 301-346-9126

(O) 301-424-0900

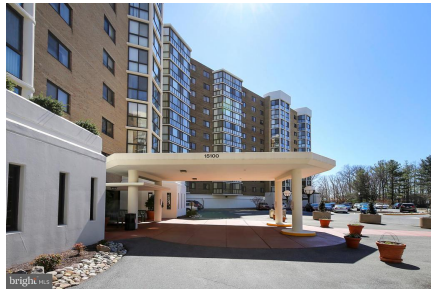
barbara@ciment.com

www.ciment.com

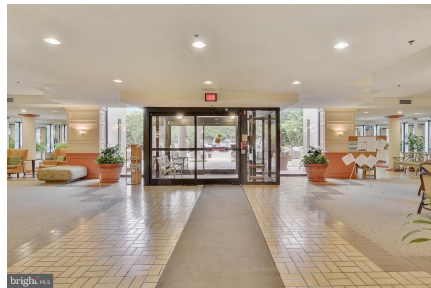




Second Bedroom!



Building Lobby!



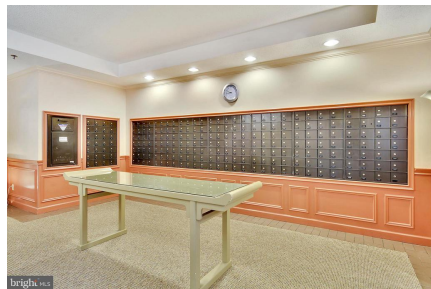
Building Lobby!



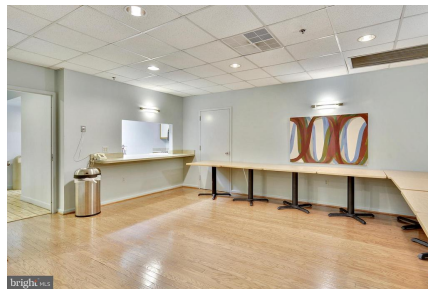
Building Lobby!



Building Lobby!



Building Lobby Mail Boxes!



All purpose Room!!



Kitchen All Purpose Room!



CIMENT & SHIELDS TEAM

Barbara Ciment, Associate Broker

LONG & FOSTER REAL ESTATE

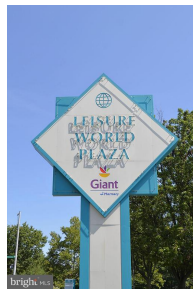
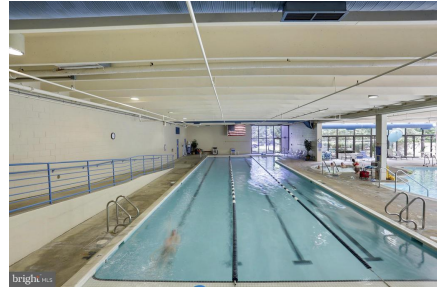
(C) 301-346-9126

(O) 301-424-0900

barbara@ciment.com

www.ciment.com





CIMENT & SHIELDS TEAM

Barbara Ciment, Associate Broker
LONG & FOSTER REAL ESTATE
REALTOR® EQUAL HOUSING OPPORTUNITY
(C) 301-346-9126 (O) 301-424-0900
barbara@ciment.com www.ciment.com





CIMENT & SHIELDS TEAM

Barbara Ciment, Associate Broker

R LONG & FOSTER REAL ESTATE

(C) 301-346-9126

(O) 301-424-0900

barbara@ciment.com

www.ciment.com

