

Recent Home Sale: 1504 HIGHLAND DR - \$1,500,000



Remarks Owner/Agent of this untraditional Arts & Crafts home that's Built to Last Sustainable Living and a dream come true. Spoil yourself with heated floors throughout (including garage). Master Suite on entry level boasts a spa bathroom and dressing room with loads of storage. Environmentally sensitive, energy efficient and a zen style Sanctuary.

Rooms	Total	Main	Upper 1	Lower 1
Bedrooms	6	1	3	2
Full Baths	4	1	2	1
Half Baths	1	1		

Basic Information

Address 1504 HIGHLAND DR
City/Town SILVER SPRING
State MD
Zip Code 20910
County MONTGOMERY
Type Detached
MLS# MDMC656074
Ownership Fee Simple

Style Bungalow
Adv Subdivision WOODSIDE PARK
DOM-Prop 26
Year Built 2005
Beds 6
Baths 4/1
Lot Size 13,222
Acres 0

Tax Living Area 4,198
Levels 3+
Total Fin Sq Ft 6,936
Contract Date 2019-05-26
Close Date 2019-07-31
Close Price \$1,500,000
Seller Subsidy \$16,000

Exterior/Construction Features/Utilities

Lot Desc Landscaping, Rear Yard
Exterior Asphalt, Concrete, Fiber Cement, HardiPlank Type, Other
Roof Architectural Shingle
Water Type Public

Sewer No Septic System, Public Sewer
Hot Water Natural Gas
Heating Hot Water, Radiant, Zoned
Cooling Central A/C, Programmable Thermostat, Zoned, Attic Fan, Ceiling Fan(s)

Garage Spaces 2.00
Parking Paved Driveway
Porch/Patio Deck(s), Patio(s), Porch(es)
Other Features Extensive Hardscape, Exterior Lighting, Lawn Sprinkler, Street Lights

Tax/Legal Information

Tax ID # 161303428227
Tax Year 2019
Tax Assessment Value \$994,700
Total Taxes \$11,787

Legal Subdiv WOODSIDE PARK
County Tax \$10,757
Lot 8
Short Sale No

Foreclosure No
REO/Bank Owned No

Interior Features/Amenities

Appliances Built-In Microwave, Cooktop, Dishwasher, Disposal, Dryer - Front Loading, Exhaust Fan, Extra Refrigerator/Freezer, Humidifier, Icemaker, Microwave, Oven - Wall, Range Hood, Refrigerator, Six Burner Stove, Stainless Steel Appliances, Washer - Front Loading
Int. Style Air Filter System, Attic, Attic/House Fan, Built-Ins, Carpet, Ceiling Fan(s), Combination Dining/Living, Combination Kitchen/Dining, Combination Kitchen/Living, Entry Level Bedroom, Floor Plan - Open, Kitchen - Gourmet, Primary Bath(s), Pantry, Recessed Lighting, Sprinkler System, Walk-in Closet(s), Window Treatments, Wood Floors

Doors Insulated, French
Windows Casement, Double Pane, Screens, Vinyl Clad
Security Carbon Monoxide Detector(s), Electric Alarm, Exterior Cameras, Security System
Fireplaces 1
Fireplace Fireplace - Glass Doors, Gas/Propane
Basement Other, Daylight, Partial, Drainage System, Full, Heated, Improved, Interior Access, Outside Entrance, Poured Concrete, Partially Finished, Sump Pump, Walkout Level

Garage Garage - Side Entry, Garage Door Opener, Inside Access

Information Courtesy of Long & Foster Real Estate, Inc.. Copyright 2021 Bright MLS. Information is believed to be accurate, but should not be relied upon without verification. Accuracy of square footage, lot size and other information is not guaranteed. This website courtesy of Barbara



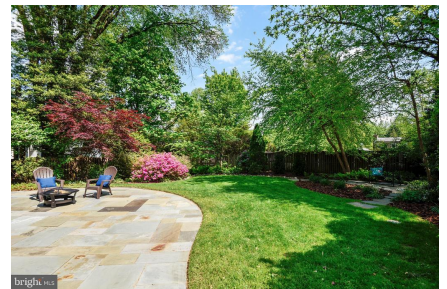
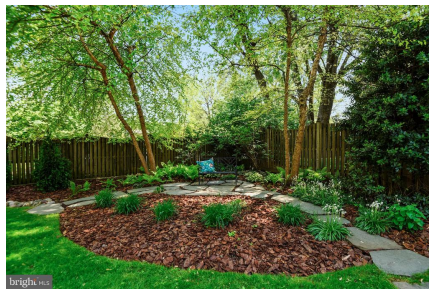
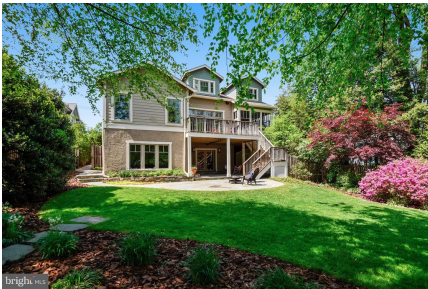
CIMENT & SHIELDS TEAM

Barbara Ciment, Associate Broker



(C) 301-346-9126 (O) 301-424-0900
 barbara@ciment.com www.ciment.com





CIMENT & SHIELDS TEAM

Barbara Ciment, Associate Broker

LONG & FOSTER REAL ESTATE

(C) 301-346-9126

(O) 301-424-0900

barbara@ciment.com

www.ciment.com





CIMENT & SHIELDS TEAM

Barbara Ciment, Associate Broker

LONG & FOSTER REAL ESTATE

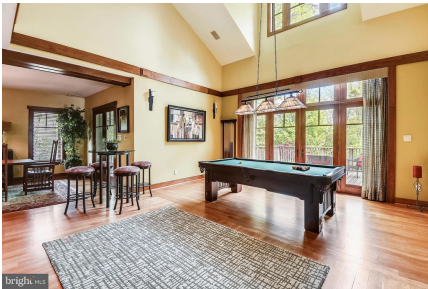
(C) 301-346-9126

(O) 301-424-0900

barbara@ciment.com

www.ciment.com





CIMENT & SHIELDS TEAM

Barbara Ciment, Associate Broker

LONG & FOSTER REAL ESTATE

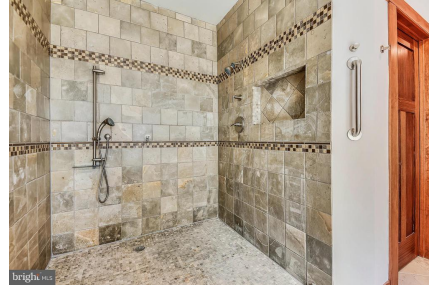
(C) 301-346-9126

(O) 301-424-0900

barbara@ciment.com

www.ciment.com





CIMENT & SHIELDS TEAM

Barbara Ciment, Associate Broker
LONG & FOSTER REAL ESTATE
REALTOR® EQUAL HOUSING OPPORTUNITY
(C) 301-346-9126 (O) 301-424-0900
barbara@ciment.com www.ciment.com

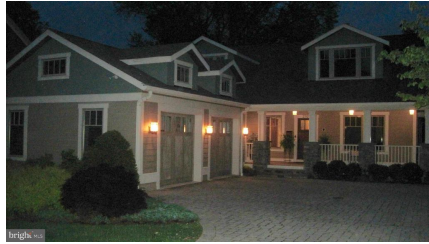
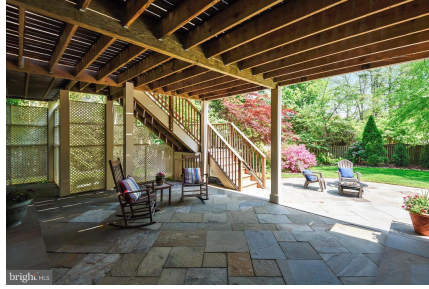




CIMENT & SHIELDS TEAM

Barbara Ciment, Associate Broker
LONG & FOSTER REAL ESTATE
REALTOR® EQUAL HOUSING OPPORTUNITY
(C) 301-346-9126 (O) 301-424-0900
barbara@ciment.com www.ciment.com





CIMENT & SHIELDS TEAM

Barbara Ciment, Associate Broker

LONG & FOSTER REAL ESTATE

(C) 301-346-9126 (O) 301-424-0900
barbara@ciment.com www.ciment.com

