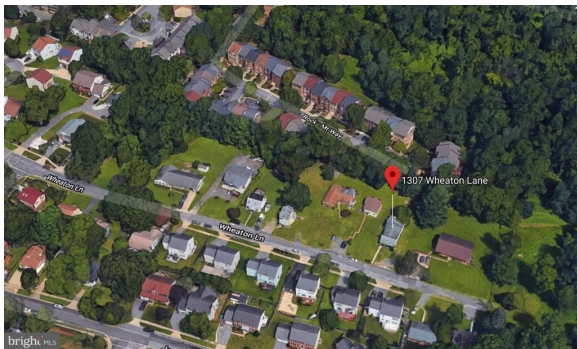


Recent Home Sale: 1307 WHEATON LN - \$700,000



Remarks Four Single Family Homes on 1 Acre of land in the heart of Silver Spring. WHEATON!The properties were built in the 1930s, belongs to the Garey family. The land is zoned R60 and can be subdivided into at least five lots. This property is grandfathered in with a single Tax ID #The four detached homes have public water, public sewer, gas, and electric and are currently tenant occupied. SUBDIVISION POTENTIAL!!!HURRY WITH YOUR BUYER BEFORE I FIND THE INVESTOR!!!Across the street are contemporary high valued detached colonial homes. Behind are contemporary townhomes.DO THE MATH

Rooms	Total	Main
Bedrooms	4	4
Full Baths	4	4
Half Baths		

Basic Information

Address 1307 WHEATON LN
City/Town SILVER SPRING
State MD
Zip Code 20902
County MONTGOMERY
Type Detached
MLS# MDMC488162
Ownership Fee Simple

Style Raised Ranch/Rambler, Colonial
Adv Subdivision PT WHEATON OUT
DOM-Prop 870
Year Built 1930
Beds 4
Baths 4
Lot Size 43,560
Acres 1

Tax Living Area 7,264
Levels 2
Total Fin Sq Ft 7,264
Contract Date 2021-07-31
Close Date 2021-08-31
Close Price \$700,000

Exterior/Construction Features/Utilities

Exterior Other
Water Type Public

Sewer Public Sewer
Hot Water Natural Gas

Heating Forced Air
Cooling Central A/C

Tax/Legal Information

Tax ID # 161300961020
Tax Year 2018
Tax Assessment Value \$906,233
Total Taxes \$11,864

Legal Subdiv WHEATON OUT RES. (2)
County Tax \$10,011
City/Town Taxes \$0
Short Sale No

Foreclosure No
REO/Bank Owned No

Information Courtesy of Allison James Estates & Homes. Copyright 2021 Bright MLS. Information is believed to be accurate, but should not be relied upon without verification. Accuracy of square footage, lot size and other information is not guaranteed. This website courtesy of Barbara Ciment, Realtor, Long & Foster Real Estate, Inc.



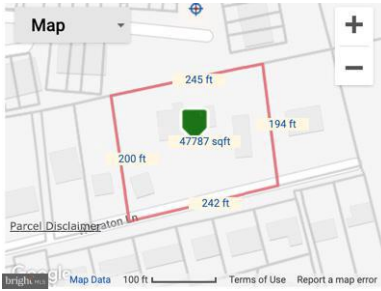
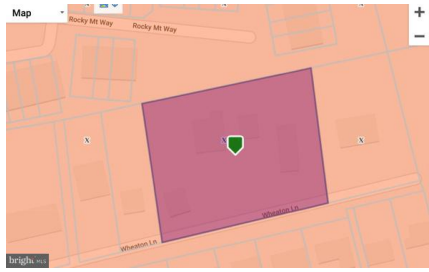
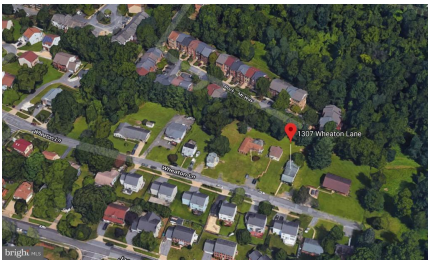
CIMENT & SHIELDS TEAM

Barbara Ciment, Associate Broker



(C) 301-346-9126 (O) 301-424-0900
 barbara@ciment.com www.ciment.com





Street view, Subject property on the left



Homes across the street



Panoramic view of property from the rear



Newer Townhomes in the back



Panoramic view of property from the rear



Built in the 1800s



Built in the 1800s



Built in the 1800s



Built in the 1800s



CIMENT & SHIELDS TEAM

Barbara Ciment, Associate Broker

LONG & FOSTER REAL ESTATE

(C) 301-346-9126 (O) 301-424-0900
barbara@ciment.com www.ciment.com





Built in the 1930s



Built in the 1930s



Built in the 1930s



Built in the 1930s



Built in the 1930s



Built in the 1930s



Built in the 1930s



Newer Townhomes in the back



Built in the 1930s



Built in the 1930s



Built in the 1930s



Built in the 1930s



Built in the 1930s



Built in the 1930s



Built in the 1930s



CIMENT & SHIELDS TEAM

Barbara Ciment, Associate Broker

LONG & FOSTER REAL ESTATE

(C) 301-346-9126

(O) 301-424-0900

barbara@ciment.com

www.ciment.com

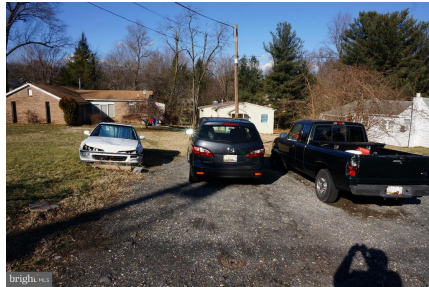




Built in the 1930s



Built in the 1930s



Homes across the street



Built in the 1800s



CIMENT & SHIELDS TEAM

Barbara Ciment, Associate Broker

LONG & FOSTER REAL ESTATE

(C) 301-346-9126 (O) 301-424-0900

barbara@ciment.com www.ciment.com

