

# Recent Home Sale: 11210 BYBEE ST - \$599,000



**Remarks** Welcome to this lovely rambler with a fully finished basement and a carport in desirable Kemp Mill Estates. Renovated table-space kitchen with granite counters, stainless steel appliances, ceramic tile floor. Hardwood floors on main level. All bathrooms have been renovated. Fresh paint and carpet. Large sunroom addition with mini split for year round cooling and heating overlooking a large, flat back yard with a shed and a deck. Windows replaced 2020. Most windows have plantation shutters. Park your car in the carport featuring extra storage, or in the long driveway.

Rooms	Total	Main	Lower 1
Bedrooms	4	3	1
Full Baths	2	2	
Half Baths	1		1

## Basic Information

**Address** 11210 BYBEE ST  
**City/Town** SILVER SPRING  
**State** MD  
**Zip Code** 20902  
**County** MONTGOMERY  
**Type** Detached  
**MLS#** MDMC2072360  
**Ownership** Fee Simple

**Style** Ranch/Rambler  
**Adv Subdivision** KEMP MILL ESTATES  
**DOM-Prop** 71  
**Year Built** 1957  
**Beds** 4  
**Baths** 2/1  
**Lot Size** 7,350  
**Acres** 0

**Tax Living Area** 1,981  
**Levels** 2  
**Total Fin Sq Ft** 1,981  
**Contract Date** 2023-01-23  
**Close Date** 2023-02-07  
**Close Price** \$599,000  
**Seller Subsidy** \$5,990

## Exterior/Construction Features/Utilities

**Exterior** Brick  
**Water Type** Public

**Sewer** Public Sewer  
**Hot Water** Natural Gas

**Heating** Heat Pump(s)  
**Cooling** Central A/C

## Tax/Legal Information

**Tax ID #** 161301330962  
**Tax Year** 2022  
**Tax Assessment Value** \$394,700  
**Total Taxes** \$5,009

**Legal Subdiv** KEMP MILL ESTATES  
**County Tax** \$4,356  
**City/Town Taxes** \$0  
**Lot** 13

**Short Sale** No  
**Foreclosure** No  
**REO/Bank Owned** No

## Interior Features/Amenities

**Int. Style** Carpet, Kitchen - Table Space,  
Window Treatments

**Basement** Daylight, Full

Information Courtesy of Compass. Copyright 2021 Bright MLS. Information is believed to be accurate, but should not be relied upon without verification. Accuracy of square footage, lot size and other information is not guaranteed. This website courtesy of Barbara Ciment, Realtor, Long & Foster Real Estate, Inc.



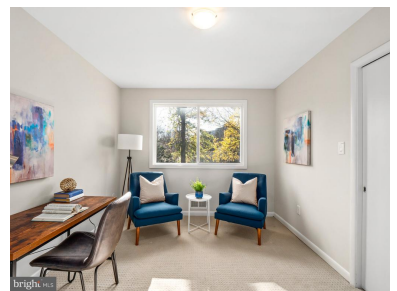
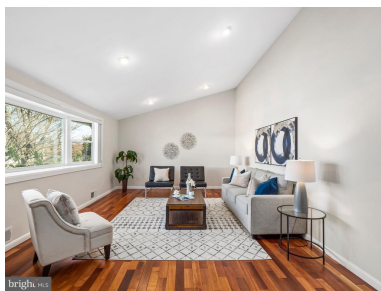
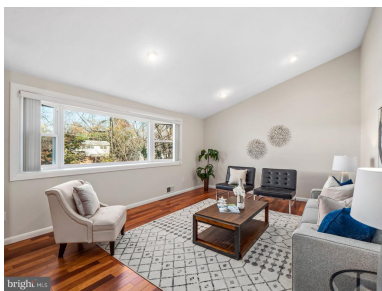
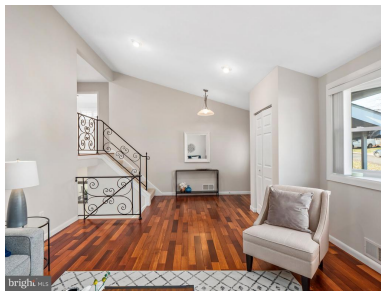
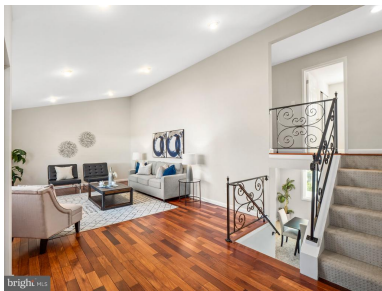
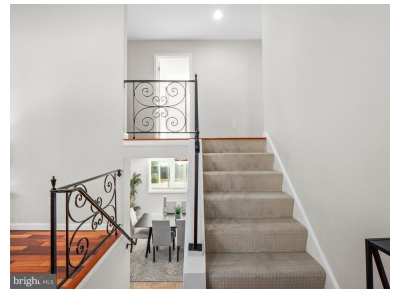
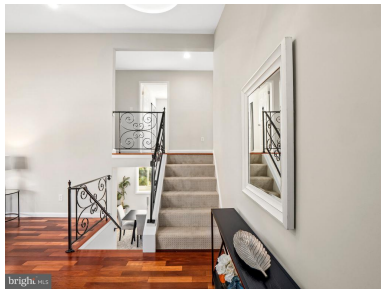
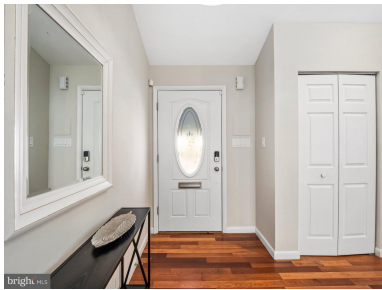
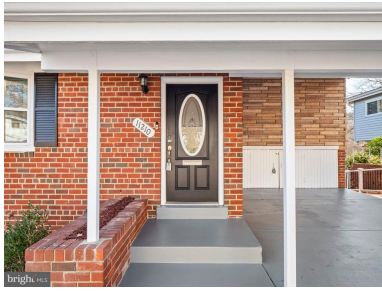
**CIMENT & SHIELDS TEAM**

**Barbara Ciment, Associate Broker**

**LONG & FOSTER REAL ESTATE**

(C) 301-346-9126 (O) 301-424-0900  
barbara@ciment.com www.ciment.com





**CIMENT & SHIELDS TEAM**

**Barbara Ciment, Associate Broker**

**LONG & FOSTER REAL ESTATE**

(C) 301-346-9126

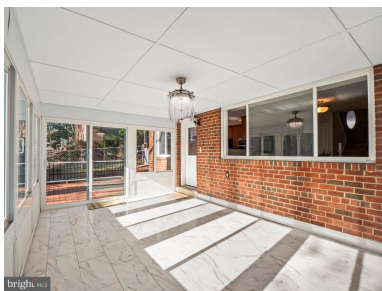
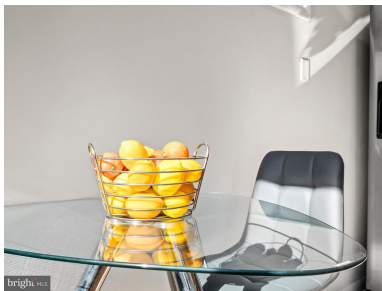
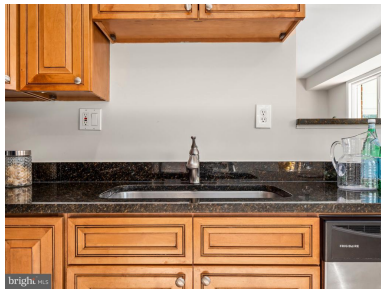
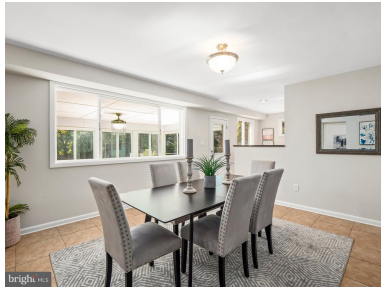
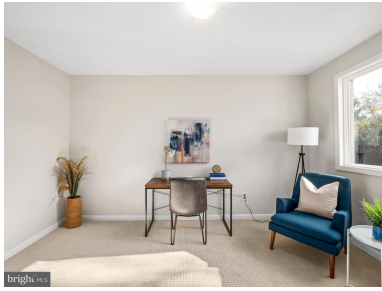
(O) 301-424-0900

barbara@ciment.com

www.ciment.com







**CIMENT & SHIELDS TEAM**

**Barbara Ciment, Associate Broker**

**LONG & FOSTER REAL ESTATE**

(C) 301-346-9126

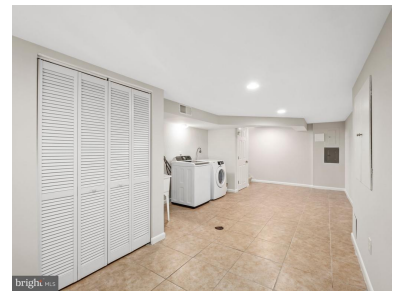
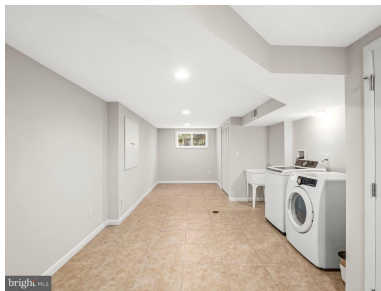
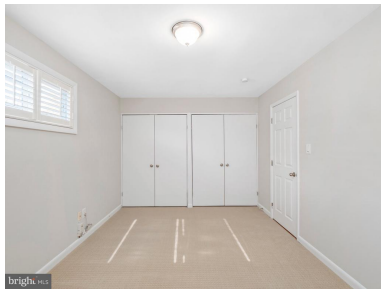
(O) 301-424-0900

[barbara@ciment.com](mailto:barbara@ciment.com)

[www.ciment.com](http://www.ciment.com)







**CIMENT & SHIELDS TEAM**

**Barbara Ciment, Associate Broker**

**LONG & FOSTER REAL ESTATE**

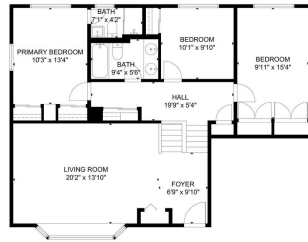
(C) 301-346-9126

(O) 301-424-0900

[barbara@ciment.com](mailto:barbara@ciment.com)

[www.ciment.com](http://www.ciment.com)





brightrls

brightrls



**CIMENT & SHIELDS TEAM**

**Barbara Ciment, Associate Broker**

**LONG & FOSTER REAL ESTATE**

(C) 301-346-9126

(O) 301-424-0900

[barbara@ciment.com](mailto:barbara@ciment.com)

[www.ciment.com](http://www.ciment.com)

