

Recent Rental: 1101 LAMBERTON DR - \$3,500



Remarks One-of-a-kind home in close in Kemp Mill, situated on a fully fenced corner lot. Home is more spacious inside than it appears from the outside. Custom 4 level contemporary split with 2 state of the art kitchens, 3.5 beautiful baths, multiple indoor and outdoor living spaces. The entry level kitchen is flooded with natural light coming from custom windows. Vaulted ceiling. Enjoy entertaining with your stainless steel double oven, 2 sinks, 2 dishwashers and huge refrigerator. Kitchen opens up to huge living room-dining room, which boasts wood flooring. The upstairs primary bedroom has 2 windows to provide extra light and has plenty of closet space. There is an on suite private bathroom updated with a shower. Gorgeous full bath with tub and shower in the hall. 2 closets in the hallway. The bedroom at the opposite end of the hall from the primary bedroom features 2 closets, and works great whether a person has a private bedroom or shares the bedroom. The center upstairs bedroom could also be an office if it is not need as a bedroom. Down a half a flight of steps from the main level is a family room/living room with an awesome kitchen and dining area. At the end of the hall is a bathroom with a shower. In addition, there are 2 doors on this level to the yard. If one wishes, this level could serve as a private suite! The lowest level of the home is a walkout recreation room, with a powder room, laundry and some storage. Enjoy the owner's furniture and toys. Awesome outdoor fenced recreation area with fence having an open to the side street (Monticello Ave). Enjoy the outdoor entertaining, from having a bbq, to using the trampoline, to running around to one's heart's content. Amazing location! Literally a block and across the street from Kemp Mill Shopping Center--you could go shop, dine and do banking without using a car! Just around the corner from 1101 Arcola is currently a public bus stop. Particularly easy access to Kemp Mill Park, Parkland Pool—pay for membership; and several houses of worship. Lots of dining, entertaining and shopping just outside of Kemp Mill. Close to Costco and Wheaton Westfield Plaza. Check out Wheaton Regional Park and Brookside Gardens. The list of local amenities and conveniences goes on and on. Great commuter home. Easy access to other areas of MD, Washington, DC or Virginia. Nearby main thoroughfares include I 495, ICC, Route 29. If you prefer public transportation, the home is a short distance from the Redline Wheaton, Glenmont or Silver Spring Metro Stops. The public buses on Arcola Ave currently have stops near the Wheaton and Silver Spring Metro stops! Unique and beautiful opportunity beckons your call.

Rooms	Total	Upper 1	Lower 1	Lower 2
Bedrooms	3	3		
Full Baths	3	2	1	
Half Baths	1			1

Basic Information

Address 1101 LAMBERTON DR
City/Town SILVER SPRING
State MD
Zip Code 20902
County MONTGOMERY
Type Detached
MLS# MDMC2085308

Ownership Other
Style Contemporary
Adv Subdivision KEMP MILL ESTATES
DOM-Prop 23
Year Built 1956
Beds 3
Baths 3/1

Lot Size 7,649
Acres 0
Levels 4
Total Fin Sq Ft 1,799
Contract Date 2023-04-01
Close Date 2023-04-14
Close Price \$3,500



CIMENT & SHIELDS TEAM

Barbara Ciment, Associate Broker



(C) 301-346-9126 (O) 301-424-0900
 barbara@ciment.com www.ciment.com



Recent Rental: 1101 LAMBERTON DR - \$3,500

Exterior/Construction Features/Utilities

Lot Desc Corner, Open, Premium, Rear Yard, Private
Exterior Combination
Roof Shingle
Water Type Public

Sewer Public Sewer
Hot Water Natural Gas
Heating Central
Cooling Central A/C, Ceiling Fan(s)
Parking Concrete Driveway

Porch/Patio Patio(s), Roof
Other Features BBQ Grill, Play Area, Play Equipment, Sidewalks, Street Lights

Tax/Legal Information

Tax ID # 161301328148
Legal Subdiv KEMP MILL ESTATES

Short Sale No
Foreclosure No

REO/Bank Owned No

Interior Features/Amenities

Appliances Dishwasher, Disposal, Oven - Double, Dryer, Washer, Refrigerator, Stainless Steel Appliances, Stove, Freezer, Extra Refrigerator/Freezer

Int. Style 2nd Kitchen, Ceiling Fan(s), Combination Dining/Living, Combination Kitchen/Dining, Family Room Off Kitchen, Floor Plan - Open, Kitchen - Gourmet, Primary Bath(s), Recessed Lighting, Tub Shower, Upgraded Countertops, Walk-in Closet(s), Wood Floors

Basement Daylight, Partial, Connecting Stairway, Fully Finished, Heated, Improved, Outside Entrance, Interior Access, Windows

Rooms/Levels/Flooring

Dining Room	Main	HardWood
Bedroom 1	Upper 1	HardWood
Full Bath	Upper 1	Tile
Dining Room	Lower 1	
Full Bath	Lower 1	
Half Bath	Lower 2	
Recreation Room	Lower 2	

Kitchen	Main	
Bedroom 2	Upper 1	HardWood
Primary Bedroom	Upper 1	HardWood
Family Room	Lower 1	
Kitchen	Lower 1	
Laundry	Lower 2	

Information Courtesy of RE/MAX Realty Group. Copyright 2021 Bright MLS. Information is believed to be accurate, but should not be relied upon without verification. Accuracy of square footage, lot size and other information is not guaranteed. This website courtesy of Barbara Ciment, Realtor, Long & Foster Real Estate, Inc.



Barbara Ciment, Associate Broker



(C) 301-346-9126 (O) 301-424-0900
barbara@ciment.com www.ciment.com





Great home on close in corner lot.



Enter home to your custom entry level kitchen!



Awesome refrigerator, double oven, light cabinets.



2 dishwashers, 2 sinks, natural light.



Generous amount of counter, cabinet space.



Great entertaining Wood floors, recessed lights.



Natural light plus recessed lights.



View from kitchen



Primary bedroom with 2 windows.



Private on suite primary bathroom shower.



Private on suite primary bathroom vanity.



1 bedroom



1 bedroom



Upstairs hall bath with shower and tub



Vanity in upstairs hall bath.



CIMENT & SHIELDS TEAM

Barbara Ciment, Associate Broker

LONG & FOSTER REAL ESTATE

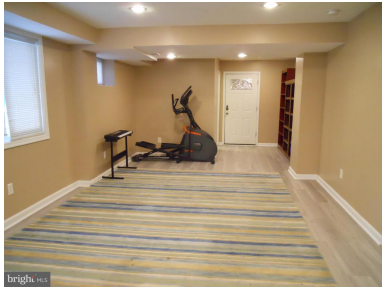
(C) 301-346-9126

(O) 301-424-0900

barbara@ciment.com

www.ciment.com





Lower-level family room. Custom side door.



Lower-level custom full bath.



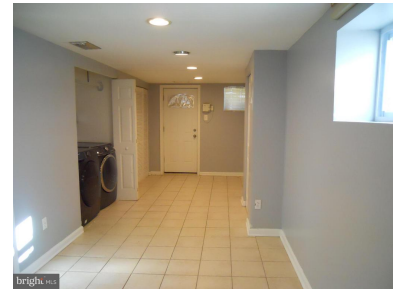
Plus vanity and toilet



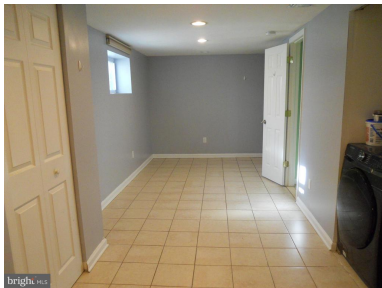
Beautiful 2nd kitchen. Cherry cabs. door to yard.



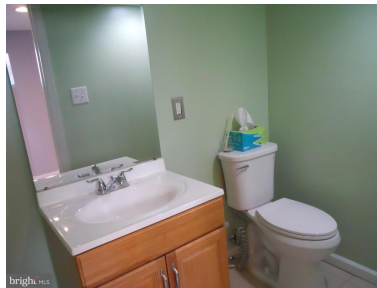
Stainless refrigerator, oven, built in microwave.



Basement rec. room with walkout exit, laundry.



View across rec room. Great space to hang out.



Custom powder room added to basement.



Huge front yard. Great fenced in play space.



View across yard, custom walk path, patio.



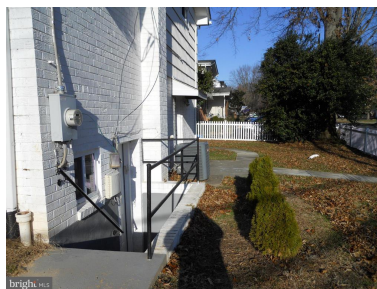
Outdoor entertaining space.



View across back yard toward Monticello Ave.



Path from backyard to side of home.



walkout basement to front or side of home.



Fence opens up on side street, Monticello Ave.



CIMENT & SHIELDS TEAM

Barbara Ciment, Associate Broker

LONG & FOSTER REAL ESTATE

(C) 301-346-9126

(O) 301-424-0900

barbara@ciment.com

www.ciment.com





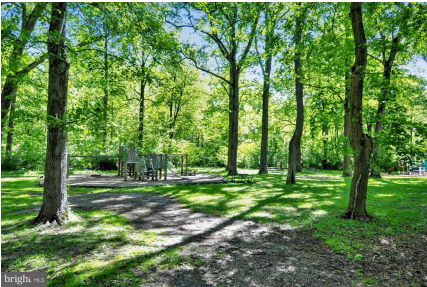
Kemp Mill Shopping Center just a block away!



Kemp Mill Park just around the corner!



Wheaton Ice Rink



Sligo



Wheaton Ice Rink



Wheaton Library



Close to Costco



Brookside Gardens



Wheaton Metro close by.



Wheaton Westfield Shopping Center.



Also close to Silver Spring Metro



AFI Theatre



CIMENT & SHIELDS TEAM

Barbara Ciment, Associate Broker

LONG & FOSTER REAL ESTATE

(C) 301-346-9126

(O) 301-424-0900

barbara@ciment.com

www.ciment.com

