



Remarks

Rooms	Total
Bedrooms	
Full Baths	
Half Baths	

Basic Information

Lot Size 0

Acres 0

Tax Living Area 0

Tax/Legal Information

Tax ID #

Foreclosure No

Short Sale No

REO/Bank Owned No

Information Courtesy of . Copyright 2021 Bright MLS. Information is believed to be accurate, but should not be relied upon without verification. Accuracy of square footage, lot size and other information is not guaranteed. This website courtesy of Barbara Ciment, Realtor, Long & Foster Real Estate, Inc.



Barbara Ciment, Associate Broker



(C) 301-346-9126

(O) 301-424-0900

barbara@ciment.com

www.ciment.com





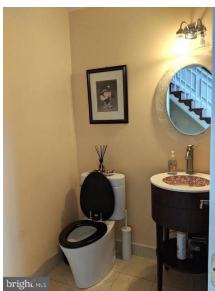
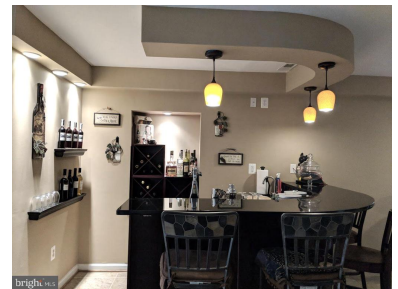
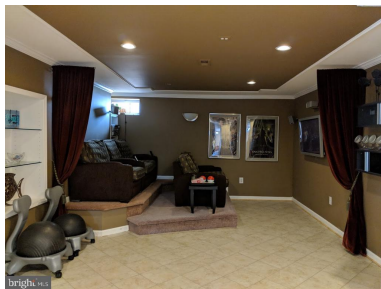
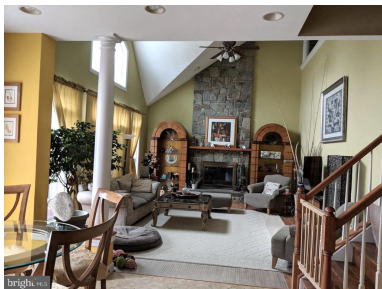
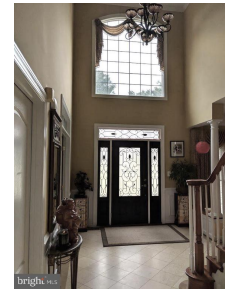
Lot

Lot



Lot

Lot




CIMENT & SHIELDS TEAM

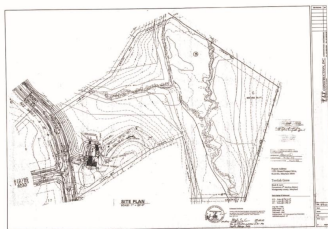
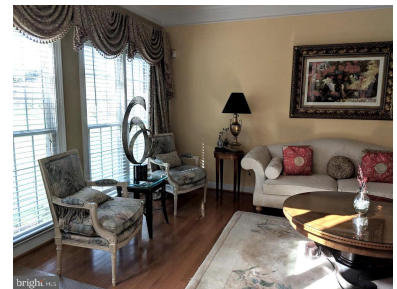
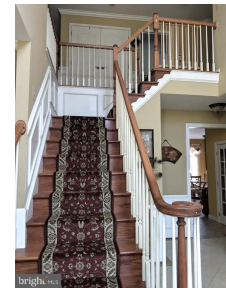
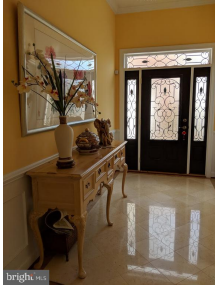
Barbara Ciment, Associate Broker

LONG & FOSTER REAL ESTATE

(C) 301-346-9126 (O) 301-424-0900

barbara@ciment.com www.ciment.com





Blue print

Community

Design



CIMENT & SHIELDS TEAM

Barbara Ciment, Associate Broker

LONG & FOSTER REAL ESTATE

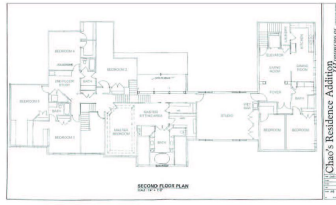
(C) 301-346-9126 (O) 301-424-0900
barbara@ciment.com www.ciment.com





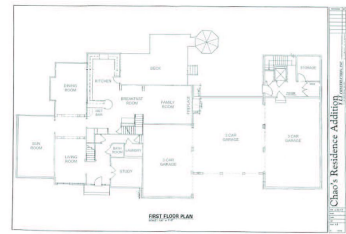
brightmls

Design



brightmls

Floor Plan



brightmls

Floor Plan



CIMENT & SHIELDS TEAM

Barbara Ciment, Associate Broker

LONG & FOSTER
REALTOR® REAL ESTATE

(C) 301-346-9126

(O) 301-424-0900

barbara@ciment.com

www.ciment.com

