

Recent Home Sale: 20113 WESTERLY AVE - \$180,000



Remarks Poolesville's finest building lot offered for less than its appraised value. A great chance to build to suit in MOCO's most charming town. A 1/2+Acre Corner lot adjoining the Westerly & Stoney Springs Subdivisions. This Building Lot is Flat, wide open and has a premium location. Walking distance from shopping, Golf, Soccer Fields and Schools.

Rooms	Total
Bedrooms	
Full Baths	
Half Baths	

Basic Information

Address 20113 WESTERLY AVE
City/Town POOLESVILLE
State MD
Zip Code 20837
County MONTGOMERY

MLS# MDMC622678
Ownership Fee Simple
Adv Subdivision POOLESVILLE
DOM-Prop 155
Lot Size 29,351

Acres 1
Contract Date 2019-08-05
Close Date 2019-10-09
Close Price \$180,000

Exterior/Construction Features/Utilities

Lot Desc Cleared, Corner, Open

Water Type Public Hook-up Available

Sewer Public Sewer, Public Hook/Up Avail

Tax/Legal Information

Tax ID # 160301738742
Tax Year 2019
Tax Assessment Value \$204,600
Total Taxes \$2,475

Legal Subdiv POOLESVILLE TOWN A-Z
County Tax \$2,106
City/Town Taxes \$359
Short Sale No

Foreclosure No
REO/Bank Owned No

Information Courtesy of Charles H. Jamison, LLC. Copyright 2021 Bright MLS. Information is believed to be accurate, but should not be relied upon without verification. Accuracy of square footage, lot size and other information is not guaranteed. This website courtesy of Barbara Ciment, Realtor, Long & Foster Real Estate, Inc.



CIMENT & SHIELDS TEAM

Barbara Ciment, Associate Broker



(C) 301-346-9126 (O) 301-424-0900
 barbara@ciment.com www.ciment.com

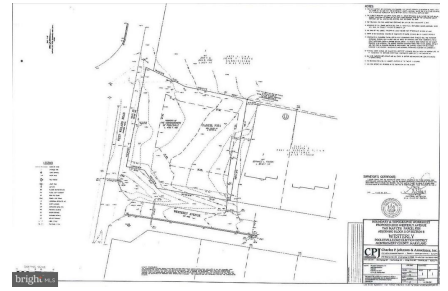




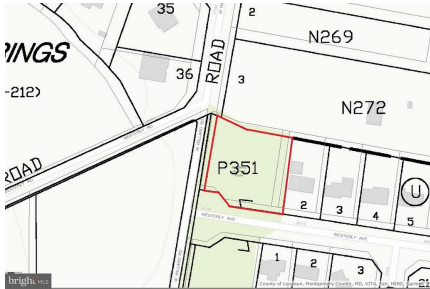
Drone View 1



View



Exterior (Front)



View



View



NNW View



Exterior (General)



SSW View



West View



Neighboring Homes valued \$750-900



South View



NW corner view



NE View



Northward Street view



NW Corner Facing South



CIMENT & SHIELDS TEAM

Barbara Ciment, Associate Broker

LONG & FOSTER REAL ESTATE

(C) 301-346-9126

(O) 301-424-0900

barbara@ciment.com

www.ciment.com





South border facing North



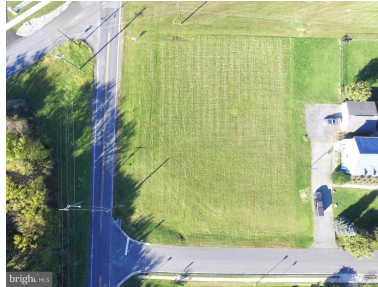
South Border facing NNE



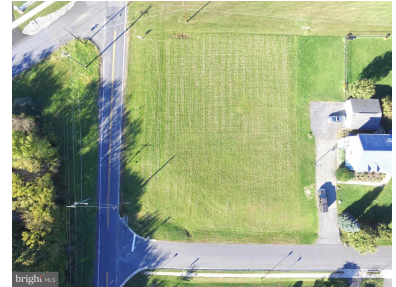
Northward View from Westerly Ave



Drone View 2



Drone View 3



Drone view 4



CIMENT & SHIELDS TEAM

Barbara Ciment, Associate Broker

LONG & FOSTER
REALTOR® REAL ESTATE

(C) 301-346-9126

(O) 301-424-0900

barbara@ciment.com

www.ciment.com

