

: -



Remarks

Rooms	Total
Bedrooms	
Full Baths	
Half Baths	

Basic Information

Lot Size 0

Acres 0

Tax Living Area 0

Tax/Legal Information

Tax ID #

Foreclosure No

Short Sale No

REO/Bank Owned No

Information Courtesy of . Copyright 2021 Bright MLS. Information is believed to be accurate, but should not be relied upon without verification. Accuracy of square footage, lot size and other information is not guaranteed. This website courtesy of Barbara Ciment, Realtor, Long & Foster Real Estate, Inc.



Barbara Ciment, Associate Broker



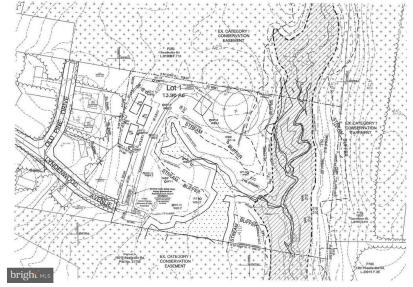
(C) 301-346-9126

(O) 301-424-0900

barbara@ciment.com

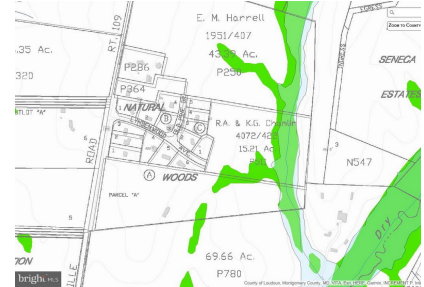
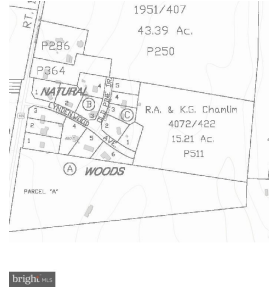
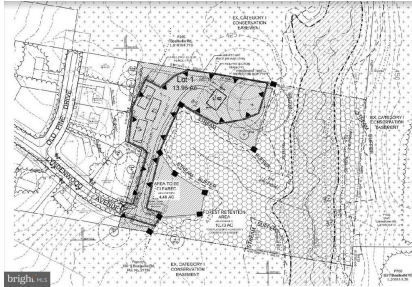
www.ciment.com





View

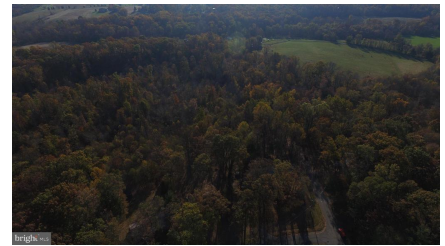
View



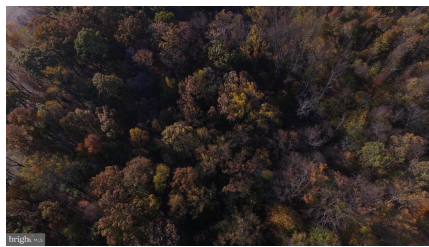
View

View

Exterior (General)



View of distance to Poolesville



South View to Poolesville



CIMENT & SHIELDS TEAM

Barbara Ciment, Associate Broker

LONG & FOSTER REAL ESTATE

(C) 301-346-9126

(O) 301-424-0900

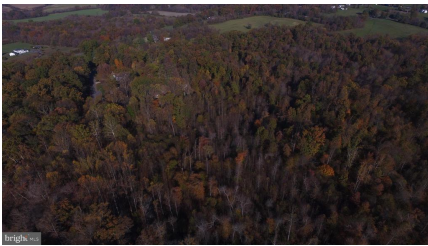
barbara@ciment.com

www.ciment.com



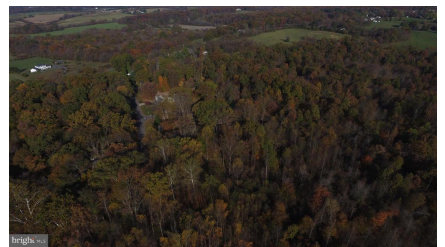
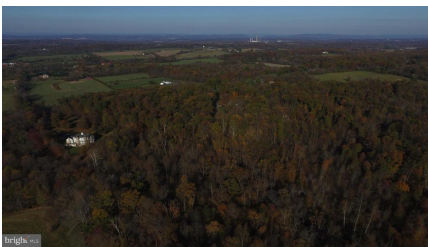


West View of lyndenwood ave

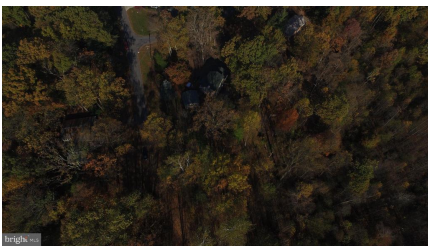


Westward View , Lyndenwood Ave on left side

Westward View, Lyndenwood Ave on the left



SW View Lyndenwood Ave in center



Lyndenwood Ave and Old Pine intersection



CIMENT & SHIELDS TEAM

Barbara Ciment, Associate Broker

LONG & FOSTER REAL ESTATE

(C) 301-346-9126 (O) 301-424-0900
barbara@ciment.com www.ciment.com

