

Recent Home Sale: 11402 HOUNDS WAY - \$977,144



Remarks A home you HAVE TO SEE TO BELIEVE! Incredible location & value in Old Farm on quiet no-thru street with tons of curb appeal!! This home has been meticulously renovated with the highest quality workmanship and impressive detailing throughout. Deceptively large inside, this home has expansive rooms with phenomenal flow and lots of natural light. Standout features include custom millwork, two wood-burning fireplaces, private study with custom built-ins, spa-like marble wrapped bathrooms and a well-appointed kitchen with large island perfect for cooking & entertaining. Built-in window seat is the perfect place to relax and read or unwind with a glass of wine while enjoying the garden view. Inviting backyard with large mature trees providing dense screening to enjoy your large flagstone patio and built-in fire pit. Rare set up with 5 bedrooms on upper level! Huge Owners suite with custom closets & en suite luxurious bath featuring a stand-up shower, free-standing soaking tub, and private commode... Fully finished walk-out basement with open space, wet bar, separate laundry, large bedroom, and full bath provide tons of flexibility for new owners. Two car garage, New Roof, New Windows, tons of attic storage and Whole house stand-by back up generator! Too many features to list!

Rooms	Total	Main	Upper 1	Lower 1
Bedrooms	6		5	1
Full Baths	4		3	1
Half Baths	1	1		

Basic Information

Address 11402 HOUNDS WAY
City/Town NORTH BETHESDA
State MD
Zip Code 20852
County MONTGOMERY
Type Detached
MLS# MDMC678404
Ownership Fee Simple

Style Split Level
Adv Subdivision OLD FARM
DOM-Prop 97
Year Built 1966
Beds 6
Baths 4/1
Lot Size 12,179
Acres 0

Tax Living Area 4,456
Levels 3+
Total Fin Sq Ft 4,456
Contract Date 2019-12-14
Close Date 2020-01-21
Close Price \$977,144

Exterior/Construction Features/Utilities

Exterior Brick, Wood Siding, Cement Siding
Water Type Public

Sewer Public Sewer
Heating Forced Air

Cooling Central A/C
Garage Spaces 2.00

Tax/Legal Information

Tax ID # 160400094417
Tax Year 2019
Tax Assessment Value \$748,400
Total Taxes \$8,562

Legal Subdiv OLD FARM
County Tax \$8,150
Lot 11
Short Sale No

Foreclosure No
REO/Bank Owned No

Interior Features/Amenities

Fireplaces 2
Fireplace Stone

Basement Fully Finished
Garage Garage - Front Entry, Inside Access

Information Courtesy of Long & Foster Real Estate, Inc.. Copyright 2021 Bright MLS. Information is believed to be accurate, but should not be relied upon without verification. Accuracy of square footage, lot size and other information is not guaranteed. This website courtesy of Barbara Ciment, Realtor, Long & Foster Real Estate, Inc.



CIMENT & SHIELDS TEAM

Barbara Ciment, Associate Broker



(C) 301-346-9126 (O) 301-424-0900
 barbara@ciment.com www.ciment.com





CIMENT & SHIELDS TEAM

Barbara Ciment, Associate Broker

LONG & FOSTER REAL ESTATE

(C) 301-346-9126

(O) 301-424-0900

barbara@ciment.com

www.ciment.com





CIMENT & SHIELDS TEAM

Barbara Ciment, Associate Broker

LONG & FOSTER REAL ESTATE

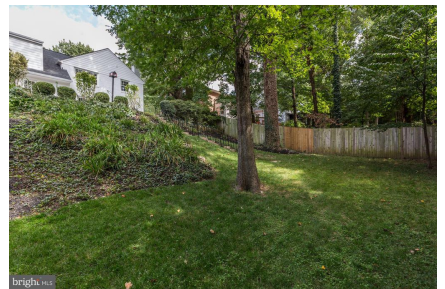
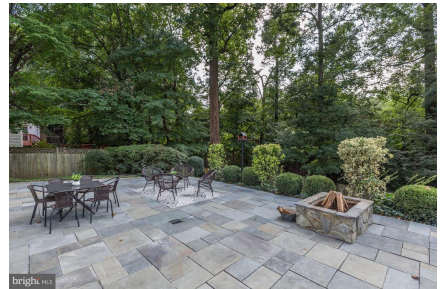
(C) 301-346-9126

(O) 301-424-0900

barbara@ciment.com

www.ciment.com





CIMENT & SHIELDS TEAM

Barbara Ciment, Associate Broker
LONG & FOSTER REAL ESTATE
(C) 301-346-9126 (O) 301-424-0900
barbara@ciment.com www.ciment.com

