

Recent Home Sale: 9918 TAMBAY CT - \$272,000



Remarks Listed below comps- SOLD strictly AS-IS. This Largest model End-Unit Town Home situated on a corner premium lot has three finished levels. It offers 3 bedrooms, 3.5bathrooms, finished basement, a huge Living room, separate dining room & an eat-in kitchen. Contact me for more information!

Rooms	Total	Main	Upper 1	Lower 1
Bedrooms	3	0	3	
Full Baths	3	0	2	1
Half Baths	1	1		

Basic Information

Address 9918 TAMBAY CT
City/Town MONTGOMERY VILLAGE
State MD
Zip Code 20886
County MONTGOMERY
Type End of Row/Townhouse
MLS# MDMC656792
Ownership Fee Simple

Style Colonial
Adv Subdivision SHADOW OAK
DOM-Prop 111
Year Built 1979
Beds 3
Baths 3/1
Lot Size 2,100
Acres 0

Tax Living Area 1,884
Levels 3+
Total Fin Sq Ft 1,884
Contract Date 2019-08-21
Close Date 2019-09-30
Close Price \$272,000

Exterior/Construction Features/Utilities

Lot Desc Backs - Open Common Area, Corner, Cul-de-sac, No Thru Street, Premium
Exterior Aluminum Siding, Brick
Water Type Public

Sewer Public Sewer
Hot Water Electric
Heating Heat Pump(s)
Cooling Central A/C

Parking Assigned
Spaces 2

Tax/Legal Information

Tax ID # 160901770343
Tax Year 2019
Tax Assessment Value \$278,233
Total Taxes \$3,335

Legal Subdiv SHADOW OAK
County Tax \$3,088
Lot 123
Short Sale No

Foreclosure No
REO/Bank Owned No

Interior Features/Amenities

Appliances Disposal, Dryer, Exhaust Fan, Oven/Range - Electric, Washer, Water Heater, Refrigerator

Int. Style Breakfast Area, Carpet, Ceiling Fan(s), Dining Area, Floor Plan - Traditional, Kitchen - Eat-In

Wall/Ceiling Dry Wall
Basement Full, Fully Finished, Sump Pump

HOA/Condo/Coop Info

HOA Fee \$118

Amenities Community Center, Pool - Outdoor

Information Courtesy of RE/MAX Premiere Selections. Copyright 2021 Bright MLS. Information is believed to be accurate, but should not be relied upon without verification. Accuracy of square footage, lot size and other information is not guaranteed. This website courtesy of Barbara Ciment, Realtor, Long & Foster Real Estate, Inc.



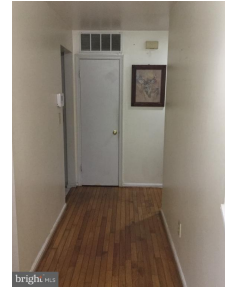
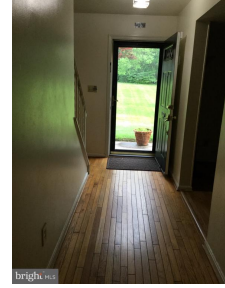
CIMENT & SHIELDS TEAM

Barbara Ciment, Associate Broker



(C) 301-346-9126 (O) 301-424-0900
 barbara@ciment.com www.ciment.com





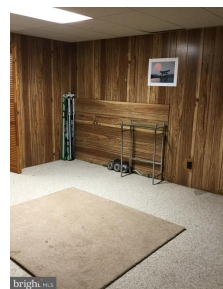
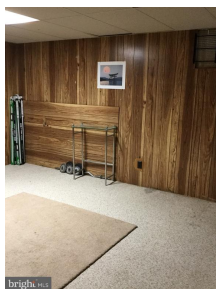
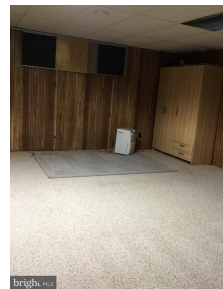
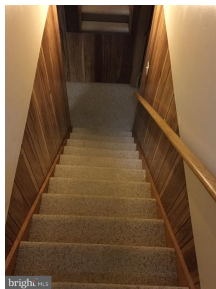
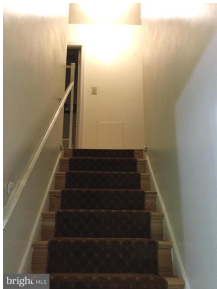
CIMENT & SHIELDS TEAM

Barbara Ciment, Associate Broker

LONG & FOSTER REAL ESTATE

(C) 301-346-9126 (O) 301-424-0900
barbara@ciment.com www.ciment.com





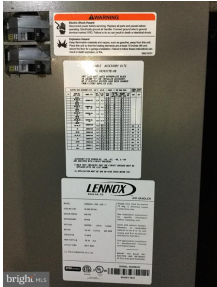
CIMENT & SHIELDS TEAM

Barbara Ciment, Associate Broker

LONG & FOSTER REAL ESTATE

(C) 301-346-9126 (O) 301-424-0900
barbara@ciment.com www.ciment.com





CIMENT & SHIELDS TEAM

Barbara Ciment, Associate Broker

LONG & FOSTER
REALTOR® REAL ESTATE

(C) 301-346-9126 (O) 301-424-0900
barbara@ciment.com www.ciment.com

