

Recent Home Sale: 9320 JUDGE PL - \$455,000



Remarks BACK ON THE MARKET! Welcome to this spacious 4 level split-family home offering 4 bedrooms, 2 full & 2 half baths in the sought after Whetstone neighborhood. The Main Level of this light-filled home boasts an eat-in Gourmet Kitchen along with a Formal Dining Room and Living Room. The First Lower Level has a large Family Room with a dramatic brick Fireplace and a cozy Office with Built-in Shelving. The Second Lower Level offers even more family space with a Recreation Room and a spacious laundry room with areas for crafts or exercise. This family-friendly home is located in a quiet community within walking distance to multiple parks and a community center featuring swimming pools, tennis courts and a tot lot.

Rooms	Total	Upper 1	Lower 1	Lower 2
Bedrooms	4	4		
Full Baths	2	2		
Half Baths	2		1	1

Basic Information

Address 9320 JUDGE PL
City/Town MONTGOMERY VILLAGE
State MD
Zip Code 20886
County MONTGOMERY
Type Detached
MLS# MDMC618952
Ownership Fee Simple

Style Split Level
Adv Subdivision WHETSTONE
DOM-Prop 23
Year Built 1968
Beds 4
Baths 2/2
Lot Size 9,156
Acres 0

Tax Living Area 2,964
Levels 3+
Total Fin Sq Ft 2,964
Contract Date 2019-03-28
Close Date 2019-04-26
Close Price \$455,000
Seller Subsidy \$3,000

Exterior/Construction Features/Utilities

Exterior Brick, Aluminum Siding
Water Type Public
Sewer Public Sewer

Hot Water Natural Gas
Heating Forced Air
Cooling Central A/C

Garage Spaces 1.00
Porch/Patio Deck(s)

Tax/Legal Information

Tax ID # 160900810067
Tax Year 2018
Tax Assessment Value \$394,867
Total Taxes \$4,671

Legal Subdiv WHETSTONE
County Tax \$4,362
Lot 330
Short Sale No

Foreclosure No
REO/Bank Owned No

Interior Features/Amenities

Appliances Built-In Microwave, Dishwasher, Disposal, Dryer, Icemaker, Refrigerator, Washer, Stainless Steel Appliances, Oven/Range - Gas, Freezer

Fireplaces 1
Fireplace Brick, Mantel(s)
Basement Shelving, Interior Access, Partially Finished

Garage Garage - Front Entry, Inside Access

HOA/Condo/Coop Info

HOA Fee \$134

Amenities Pool - Outdoor, Community Center, Picnic Area, Tennis Courts, Tot Lots/Playground, Basketball Courts, Jog/Walk Path

Information Courtesy of The Agency DC. Copyright 2021 Bright MLS. Information is believed to be accurate, but should not be relied upon without verification. Accuracy of square footage, lot size and other information is not guaranteed. This website courtesy of Barbara Ciment, Realtor, Long & Foster Real Estate, Inc.



CIMENT & SHIELDS TEAM

Barbara Ciment, Associate Broker



(C) 301-346-9126 (O) 301-424-0900
 barbara@ciment.com www.ciment.com





Exterior (Front)



Exterior (Rear)



Exterior (Front)



Gourmet Kitchen



Gourmet Kitchen



Gourmet Kitchen



Kitchen w/Garden Window



Kitchen w/5 Burner Stove & Oven w/Warming Tray



Dining Room



Dining Room



Living Room



Living Room w/Built-in Shelving



Living Room w/Built-in Shelving



Master Bedroom



Master Bedroom



CIMENT & SHIELDS TEAM

Barbara Ciment, Associate Broker

LONG & FOSTER REAL ESTATE

(C) 301-346-9126

(O) 301-424-0900

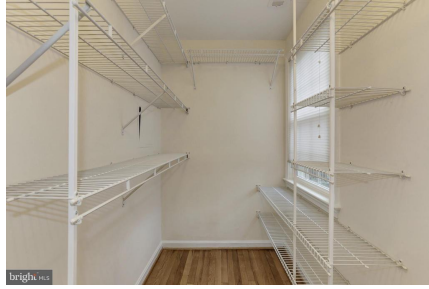
barbara@ciment.com

www.ciment.com





Master Bath



Master Walk-in Closet w/Shelving



Upper Level Bedroom #2



Upper Level Bedroom #3 w/Bath



Upper Level Bedroom #3 w/Bath



Upper Level Updated Bath



Upper Level Bedroom #4



Upper Level Bedroom #4



Upper Level Bedroom #4 Walk-in Closet



First Lower Level Office w/Built-in Shelving



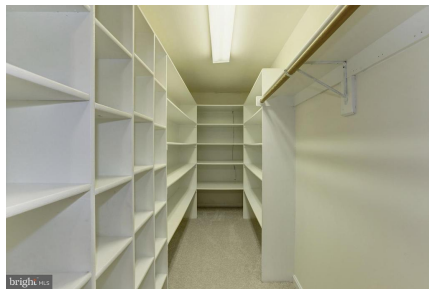
First Lower Level Office w/Built-in Shelving



First Lower Level Family Room w/Fireplace



First Lower Level Family Room w/Fireplace



First Lower Level Large Walk-in Closet w/Shelving



Second Lower Level



CIMENT & SHIELDS TEAM

Barbara Ciment, Associate Broker

LONG & FOSTER REAL ESTATE

(C) 301-346-9126

(O) 301-424-0900

barbara@ciment.com

www.ciment.com





Second Lower Level



Large Laundry Room w/Front Loading W/D



Large Laundry Room w/Built-in Cabinets/Shelving



Two Level Deck



Exterior (Rear)



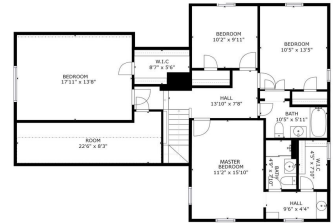
Beautiful Whetstone Lake



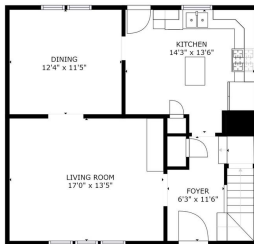
Community Pool



Playground



Floor Plan (Upper Level)



Floor Plan (Main Level)



Floor Plan (Lower Level 1)



Floor Plan (Lower Level 2)



Floor Plan (Entire)



CIMENT & SHIELDS TEAM

Barbara Ciment, Associate Broker

LONG & FOSTER REAL ESTATE

(C) 301-346-9126

(O) 301-424-0900

barbara@ciment.com

www.ciment.com

