

Recent Home Sale: 20126 WELBECK TER - \$175,000



Remarks NEW, IMPROVED PRICE! Open floor plan with new wood floors on main level & granite countertops in kitchen & breakfast bar. Kitchen opens to large Great Room with access to patio. You'll also conveniently find a half bath & laundry on the main level. Second floor has two large bedrooms & full bath. Large, private master bedroom on top floor with additional storage closet that has potential for possible full bath in the future. Convenient proximity to commuter routes, I-370/I-270/ICC, Shady Grove Metro Station, & Gaithersburg MARC Train Station. This home is located in an amenity-filled community with swimming pools, tennis courts, multiple playgrounds and so much more! Property being sold strictly "AS IS." HOME WARRANTY AVAILABLE FOR FULL YEAR. Great investment for first time homebuyers or investors looking for an income property. Schedule a private tour today!

Rooms	Total	Main	Upper 1	Upper 2
Bedrooms	3	0	2	1
Full Baths	1	0	1	0
Half Baths	1	1		

Basic Information

Address 20126 WELBECK TER
City/Town MONTGOMERY VILLAGE
State MD
Zip Code 20886
County MONTGOMERY
Type Interior Row/Townhouse
MLS# MDMC672722
Ownership Fee Simple

Style Contemporary, Back-to-Back
Adv Subdivision MCCONKEY
DOM-Prop 49
Year Built 1981
Beds 3
Baths 1/1
Lot Size 779
Acres 0

Tax Living Area 1,254
Levels 3+
Total Fin Sq Ft 1,254
Contract Date 2019-09-16
Close Date 2019-10-15
Close Price \$175,000

Exterior/Construction Features/Utilities

Exterior Other, Combination
Water Type Public
Sewer Public Sewer

Hot Water Electric
Heating Forced Air, Programmable
 Thermostat, Heat Pump - Electric BackUp

Cooling Heat Pump(s), Programmable
 Thermostat
Parking Assigned

Tax/Legal Information

Tax ID # 160102002820
Tax Year 2019
Tax Assessment Value \$187,433
Total Taxes \$2,317

Legal Subdiv MCCONKEY - MONTG VILL
County Tax \$2,069
Lot 125
Short Sale No

Foreclosure No
REO/Bank Owned No

Interior Features/Amenities

Appliances Dryer - Electric, Dishwasher, Disposal, Exhaust Fan, Oven/Range - Electric, Washer - Front Loading, Water Heater, Refrigerator

Int. Style Carpet, Combination Dining/Living, Family Room Off Kitchen, Floor Plan - Open, Floor Plan - Traditional, Kitchen - Galley, Tub Shower, Walk-in Closet(s), Wood Floors

Wall/Ceiling Dry Wall

Rooms/Levels/Flooring

Great Room	Main	HardWood	Half Bath	Main	Laminated
Kitchen	Main	HardWood	Laundry	Main	
Bedroom 1	Upper 1	Carpet	Bedroom 2	Upper 1	Carpet
Primary Bedroom	Upper 2	Carpet	Storage Room	Upper 2	



CIMENT & SHIELDS TEAM

Barbara Ciment, Associate Broker



(C) 301-346-9126 (O) 301-424-0900
 barbara@ciment.com www.ciment.com



Recent Home Sale: 20126 WELBECK TER - \$175,000

HOA/Condo/Coop Info

HOA Fee \$350

Amenities Basketball Courts, Bike Trail, Club House, Common Grounds, Community Center, Jog/Walk Path, Lake, Picnic Area, Pool - Outdoor, Swimming Pool, Tennis Courts, Tot Lots/Playground

Information Courtesy of RE/MAX Realty Group. Copyright 2021 Bright MLS. Information is believed to be accurate, but should not be relied upon without verification. Accuracy of square footage, lot size and other information is not guaranteed. This website courtesy of Barbara Ciment, Realtor, Long & Foster Real Estate, Inc.



**CIMENT
& SHIELDS** TEAM

Barbara Ciment, Associate Broker

LONG & FOSTER
REALTOR® REAL ESTATE

(C) 301-346-9126

(O) 301-424-0900

barbara@ciment.com

www.ciment.com





Welcome to 20126 Welbeck Terrace



Private front patio



Brand new wood floors on the main level



Kitchen opens to Great Room



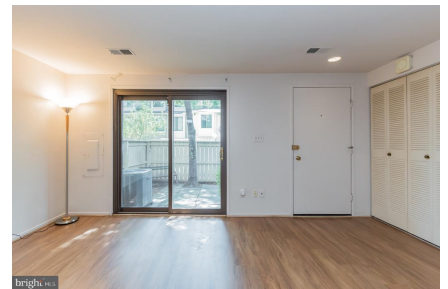
Open floor plan



Breakfast bar with brand new granite counters



Brand new granite counters & stainless steel sink



Slider door to patio



Large Great Room- 18'1 x 16'6



Bathroom on Main Level



CIMENT & SHIELDS TEAM

Barbara Ciment, Associate Broker

LONG & FOSTER REAL ESTATE

(C) 301-346-9126

(O) 301-424-0900

barbara@ciment.com

www.ciment.com





Laundry on Main Level



Bedroom #1 - 8'1 x 14'7



Bedroom #2 - 9'9 x 13'1 with large walk-in



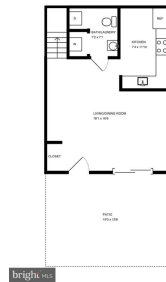
Hall Bath



Additional Storage on top floor



Large Master Bedroom - 18'1 x 12'6



CIMENT & SHIELDS TEAM

Barbara Ciment, Associate Broker

LONG & FOSTER REAL ESTATE

(C) 301-346-9126 (O) 301-424-0900
barbara@ciment.com www.ciment.com





brighthouse



brighthouse



Home faces Courtyard



CIMENT & SHIELDS TEAM

Barbara Ciment, Associate Broker

LONG & FOSTER
REALTOR® REAL ESTATE

(C) 301-346-9126

(O) 301-424-0900

barbara@ciment.com

www.ciment.com

