

Recent Home Sale: 10333 BATTLERIDGE PL - \$255,000



Remarks PRICE IMPROVEMENT! Welcome Home to this updated and move in ready 3 bedroom 2.5 bath /2150 sq foot town home in Stedwick Clusters III. HVAC 1 year old , newer windows, two additional unofficial bedrooms in the basement. Gleaming hardwood floors thought, updated kitchen with granite counters, stainless appliances and hardwood cabinets. Fresh paint and carpet, new lighting, fresh landscaping, and more.! A must see!

Rooms	Total	Main	Upper 1
Bedrooms	3	0	3
Full Baths	2	0	2
Half Baths	1	1	

Basic Information

Address 10333 BATTLERIDGE PL
City/Town MONTGOMERY VILLAGE
State MD
Zip Code 20879
County MONTGOMERY
Type Interior Row/Townhouse
MLS# MDMC666568
Ownership Fee Simple

Style Traditional
Adv Subdivision STEDWICK TOWNHOUSES
DOM-Prop 37
Year Built 1972
Beds 3
Baths 2/1
Lot Size 2,054
Acres 0

Tax Living Area 1,975
Levels 3+
Total Fin Sq Ft 1,975
Contract Date 2019-08-01
Close Date 2019-08-30
Close Price \$255,000

Exterior/Construction Features/Utilities

Exterior Other
Water Type Public
Sewer Public Sewer

Heating Heat Pump(s)
Cooling Heat Pump(s)
Parking Assigned

Spaces 1

Tax/Legal Information

Tax ID # 160901474347
Tax Year 2019
Tax Assessment Value \$277,700
Total Taxes \$3,473

Legal Subdiv STEDWICK TOWNHOUSES
County Tax \$3,225
Lot 1106
Short Sale No

Foreclosure No
REO/Bank Owned No

Interior Features/Amenities

Int. Style Kitchen - Gourmet, Recessed Lighting, Floor Plan - Traditional, Dining Area, Skylight(s), Store/Office, Upgraded Countertops, Walk-in Closet(s), Wood Floors

Basement Daylight, Partial, Improved, Heated

HOA/Condo/Coop Info

HOA Fee \$369

Information Courtesy of RE/MAX Realty Group. Copyright 2021 Bright MLS. Information is believed to be accurate, but should not be relied upon without verification. Accuracy of square footage, lot size and other information is not guaranteed. This website courtesy of Barbara Ciment, Realtor, Long & Foster Real Estate, Inc.



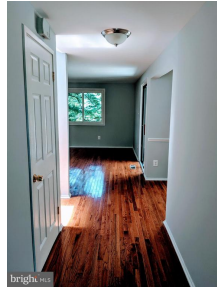
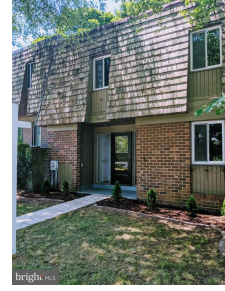
CIMENT & SHIELDS TEAM

Barbara Ciment, Associate Broker



(C) 301-346-9126 (O) 301-424-0900
 barbara@ciment.com www.ciment.com





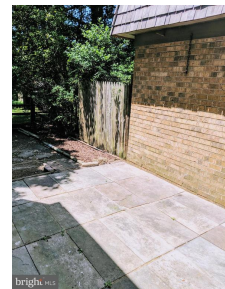
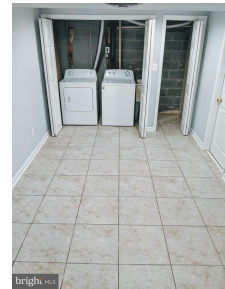
CIMENT & SHIELDS TEAM

Barbara Ciment, Associate Broker

LONG & FOSTER REAL ESTATE

(C) 301-346-9126 (O) 301-424-0900
barbara@ciment.com www.ciment.com





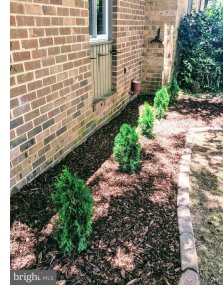
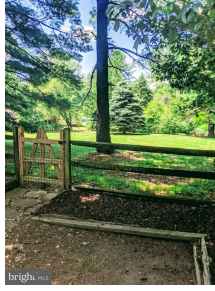
CIMENT & SHIELDS TEAM

Barbara Ciment, Associate Broker

LONG & FOSTER REAL ESTATE

(C) 301-346-9126 (O) 301-424-0900
barbara@ciment.com www.ciment.com





CIMENT & SHIELDS TEAM

Barbara Ciment, Associate Broker

LONG & FOSTER
REALTOR® REAL ESTATE

(C) 301-346-9126

(O) 301-424-0900

barbara@ciment.com

www.ciment.com

