

: -



Remarks

Rooms	Total
Bedrooms	
Full Baths	
Half Baths	

Basic Information

Lot Size 0

Acres 0

Tax Living Area 0

Tax/Legal Information

Tax ID #

Foreclosure No

Short Sale No

REO/Bank Owned No

Information Courtesy of . Copyright 2021 Bright MLS. Information is believed to be accurate, but should not be relied upon without verification. Accuracy of square footage, lot size and other information is not guaranteed. This website courtesy of Barbara Ciment, Realtor, Long & Foster Real Estate, Inc.



Barbara Ciment, Associate Broker



(C) 301-346-9126

(O) 301-424-0900

barbara@ciment.com

www.ciment.com





Previously built model. Select your own finishes wine fridge, beverage fridge, microwave, quartz TBD



2 dishwashers, 6 burner range, dble oven



breakfast room, door to back deck



Living Room tray ceiling



Living Room off dining room and foyer



Dining Room off kitchen w/ tray ceiling



Family Room off kitchen, coffered ceiling, gas FP



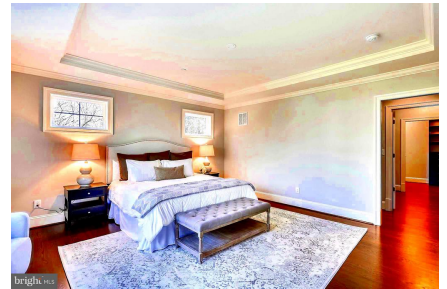
powder room, finishes TBD



1st floor master w/tray ceiling



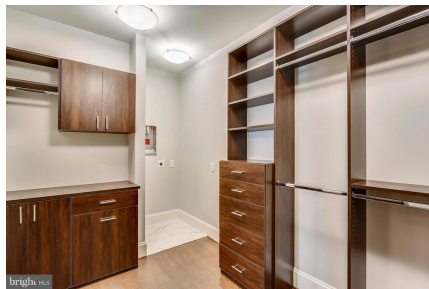
1st fl. MBR, door to back, hw floors, work station



MBR to walk in closet



master closet, other finishes available



master closet with washer and dryer hookup



work station off MBR, select your finishes



CIMENT & SHIELDS TEAM

Barbara Ciment, Associate Broker

LONG & FOSTER REAL ESTATE

(C) 301-346-9126

(O) 301-424-0900

barbara@ciment.com

www.ciment.com





coffee/work station, select your own finishes



mud room off of spacious double garage



upper level loft/TV room/office wood floors



upper level loft + 4 BR, 4 full ba, laundry



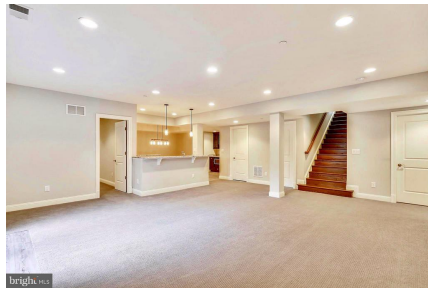
2nd fl. guest suite w/ 2 walk in closets, lux bath



guest suite bath, finishes TBD



upper level laundry rm w/cabinets, sink, ceramic fl



office/BR/full ba./workout room/wetbar/kitchenette



Walkout basement w/billiard room/full bath/RI 1/2



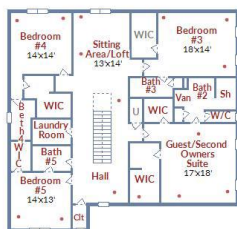
LL kitchenette wine fridge, microwave, finishes TBD



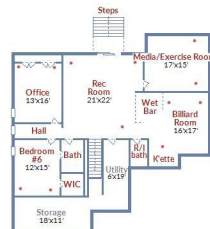
wet bar overlooking TV area, finishes TBD



Main floor



2nd floor



LL floor plan lot will have level walk out.



CIMENT & SHIELDS TEAM

Barbara Ciment, Associate Broker

LONG & FOSTER REAL ESTATE

(C) 301-346-9126

(O) 301-424-0900

barbara@ciment.com

www.ciment.com

