

Recent Rental: 9 CAMPBELL CT - \$3,100



Remarks Meticulously maintained and updated 4BR/2.5BA colonial located at the end of a private cul-de-sac in the BCC School District in Kensington. New roof, newly painted + brand new carpet. Beautifully renovated kitchen and baths. Finished lower level leads to a 2 car garage. Newer windows and patio doors; conveniently located near Rock Creek Park, metro and major highways. No pets. No smoking. \$35 application fee.

Rooms	Total	Main	Upper 1
Bedrooms	4	1	3
Full Baths	2		2
Half Baths	1	1	

Basic Information

Address 9 CAMPBELL CT
City/Town KENSINGTON
State MD
Zip Code 20895
County MONTGOMERY
Type Detached
MLS# MDMC685068

Ownership Other
Style Colonial
Adv Subdivision ROCK CREEK HILLS
DOM-Prop 22
Year Built 1979
Beds 4
Baths 2/1

Levels 3+
Total Fin Sq Ft 1,884
Contract Date 2019-12-02
Close Date 2019-12-02
Close Price \$3,100

Exterior/Construction Features/Utilities

Exterior Brick
Roof Asphalt, Architectural Shingle
Water Type Public

Sewer Public Sewer
Hot Water Electric
Heating Forced Air

Cooling Central A/C
Garage Spaces 2.00

Tax/Legal Information

Tax ID # 161301839538
Tax Assessment Value \$608,100

Legal Subdiv ROCK CREEK HILLS
Short Sale No

Foreclosure No
REO/Bank Owned No

Interior Features/Amenities

Wall/Ceiling Dry Wall
Fireplaces 1

Basement Other

Garage Garage - Front Entry, Garage Door Opener, Oversized

HOA/Condo/Coop Info

HOA Fee \$400

Information Courtesy of Foster Spahr and Company. Copyright 2021 Bright MLS. Information is believed to be accurate, but should not be relied upon without verification. Accuracy of square footage, lot size and other information is not guaranteed. This website courtesy of Barbara Ciment, Realtor, Long & Foster Real Estate, Inc.



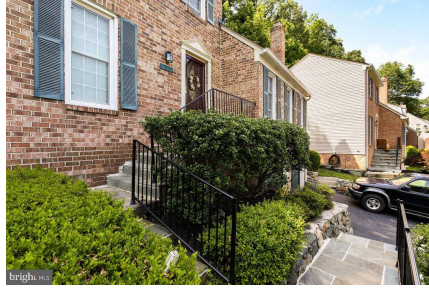
CIMENT & SHIELDS TEAM

Barbara Ciment, Associate Broker



(C) 301-346-9126 (O) 301-424-0900
barbara@ciment.com www.ciment.com

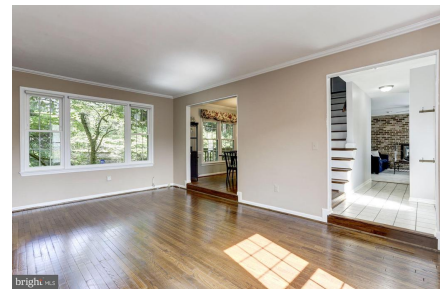




Gourmet kitchen w/ wine bar



Custom tile backsplash



CIMENT & SHIELDS TEAM

Barbara Ciment, Associate Broker

LONG & FOSTER REAL ESTATE

(C) 301-346-9126

(O) 301-424-0900

barbara@ciment.com

www.ciment.com





Large master suite



Large master suite



Large master suite



Spa-inspired en-suite Master Bath



Spa-inspired en-suite Master Bath



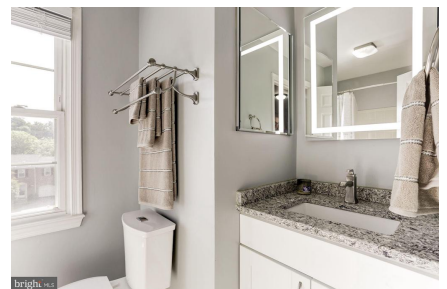
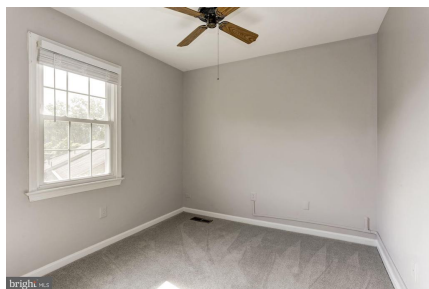
Spa-inspired en-suite Master Bath



Spa-inspired en-suite Master Bath



Spa-inspired en-suite Master Bath



CIMENT & SHIELDS TEAM

Barbara Ciment, Associate Broker

LONG & FOSTER REAL ESTATE

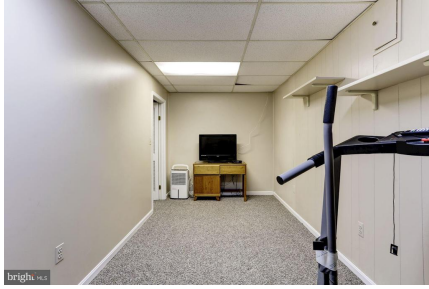
(C) 301-346-9126

(O) 301-424-0900

barbara@ciment.com

www.ciment.com





CIMENT & SHIELDS TEAM

Barbara Ciment, Associate Broker

LONG & FOSTER REAL ESTATE

(C) 301-346-9126 (O) 301-424-0900
barbara@ciment.com www.ciment.com

