

## Recent Home Sale: 4501 SAUL RD - \$699,000



**Remarks** Welcome to this large light-filled Cape Cod in the Parkwood neighborhood of the Walter Johnson High School district. Hardwood floors on two levels, big formal living room with brick fireplace and a separate dining room with built-in shelving. The first level also offers an updated kitchen with granite counters, a bedroom/office, a full bath and a den. The upper level features three good sized bedrooms, two with large closets, and a full ceramic bath. The home is completed with a lower level study, large family room, full bath, laundry area, and generous storage space. Ideally located close to Rock Creek Park, the National Institutes of Health, MARC, Metro and Kensington Parkwood Elementary School. When the neighborhood was first developed, this house was the builders show home, built with particular care and attention to detail.

Rooms	Total	Main	Upper 1	Lower 1
Bedrooms	4	1	3	
Full Baths	3	1	1	1
Half Baths	0			0

### Basic Information

**Address** 4501 SAUL RD  
**City/Town** KENSINGTON  
**State** MD  
**Zip Code** 20895  
**County** MONTGOMERY  
**Type** Detached  
**MLS#** MDMC657718  
**Ownership** Fee Simple

**Style** Cape Cod  
**Adv Subdivision** PARKWOOD  
**DOM-Prop** 36  
**Year Built** 1950  
**Beds** 4  
**Baths** 3  
**Lot Size** 9,378  
**Acres** 0

**Tax Living Area** 2,201  
**Levels** 3+  
**Total Fin Sq Ft** 2,201  
**Contract Date** 2019-06-21  
**Close Date** 2019-07-22  
**Close Price** \$699,000  
**Seller Subsidy** \$10,000

### Exterior/Construction Features/Utilities

**Exterior** Brick  
**Water Type** Public

**Sewer** Public Sewer  
**Heating** Forced Air

**Cooling** Central A/C

### Tax/Legal Information

**Tax ID #** 161301141606  
**Tax Year** 2019  
**Tax Assessment Value** \$617,700  
**Total Taxes** \$7,617

**Legal Subdiv** PARKWOOD  
**County Tax** \$7,096  
**Lot** P6  
**Short Sale** No

**Foreclosure** No  
**REO/Bank Owned** No

### Interior Features/Amenities

**Fireplaces** 1

**Basement** Full

Information Courtesy of McEneaney Associates. Copyright 2021 Bright MLS. Information is believed to be accurate, but should not be relied upon without verification. Accuracy of square footage, lot size and other information is not guaranteed. This website courtesy of Barbara Ciment, Realtor, Long & Foster Real Estate, Inc.



**CIMENT & SHIELDS TEAM**

**Barbara Ciment, Associate Broker**



(C) 301-346-9126 (O) 301-424-0900  
 barbara@ciment.com www.ciment.com





Front



Front



Dining Room



Dining Room



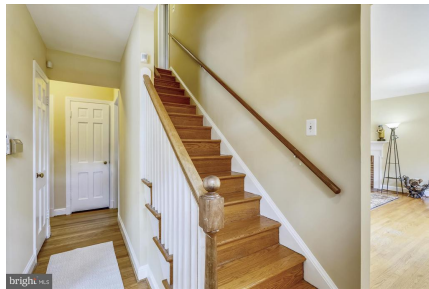
Kitchen



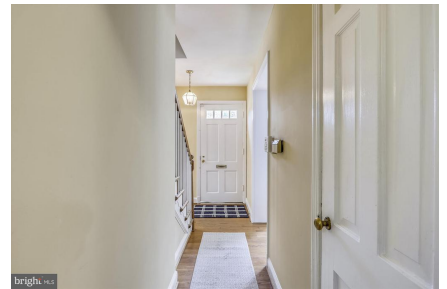
Kitchen



Den off Living Room



Stairs to Second Level



First Floor Hall



Bedroom



Bedroom



Bedroom



**CIMENT & SHIELDS TEAM**

**Barbara Ciment, Associate Broker**

**LONG & FOSTER REAL ESTATE**

(C) 301-346-9126

(O) 301-424-0900

[barbara@ciment.com](mailto:barbara@ciment.com)

[www.ciment.com](http://www.ciment.com)







Bedroom



First Floor Bedroom



Bedroom



First Floor Bedroom



Bedroom



Family Room Lower Level



Study in Lower Level



Study in Lower Level



First Floor Bath



Upper Level Bath



Half Bath Lower Level



Back Yard



Side Yard



MARC Station



Kensington Antique Row



**CIMENT & SHIELDS TEAM**

**Barbara Ciment, Associate Broker**

**LONG & FOSTER REAL ESTATE**

(C) 301-346-9126

(O) 301-424-0900

barbara@ciment.com

www.ciment.com





Kensington Town Hall



Close by Strathmore



**CIMENT & SHIELDS** TEAM

**Barbara Ciment, Associate Broker**

**LONG & FOSTER** REAL ESTATE

(C) 301-346-9126

(O) 301-424-0900

[barbara@ciment.com](mailto:barbara@ciment.com)

[www.ciment.com](http://www.ciment.com)

