

Recent Home Sale: 4012 HALSEY CT - \$605,000



Remarks READY TO MOVE IN , THIS STUNNING FULLY RENOVATED WITH ADDITION, TOP TO BOTTOM HOUSE FEATURES 3BR,3FB .BEAUTIFUL NEW GLEAMING HARDWOOD FLOOR, OVERHEAD RECESS LIGHTING, NEW ROOF, NEW WINDOWS, NEW HVAC, NEW BATHROOMS, NEW KITCHEN AND SO MUCH MORE.THE LOWER LEVEL IS PLENTY OF ROOM FOR ENTERTANNING . THIRD BEDROOM ON MAIN FLOOR WITH FULL BATH. CONVENIENT LOCATION , METRO, BUS LINE, DOWNTOWN BETHESDA, NIH, I-495, I-270.

Rooms	Total	Main	Upper 1	Lower 1
Bedrooms	3	0	2	1
Full Baths	3	1	2	0
Half Baths	0	0		0

Basic Information

Address 4012 HALSEY CT
City/Town KENSINGTON
State MD
Zip Code 20895
County MONTGOMERY
Type Detached
MLS# MDMC682432
Ownership Fee Simple

Style Colonial
Adv Subdivision ROCK CREEK PALISADES
DOM-Prop 203
Year Built 1951
Beds 3
Baths 3
Lot Size 5,617
Acres 0

Tax Living Area 1,450
Levels 3+
Total Fin Sq Ft 1,450
Contract Date 2020-05-06
Close Date 2020-05-21
Close Price \$605,000

Exterior/Construction Features/Utilities

Exterior Vinyl Siding
Water Type Public

Sewer Public Sewer
Heating Forced Air

Cooling Central A/C

Tax/Legal Information

Tax ID # 161301258832
Tax Year 2020
Tax Assessment Value \$526,400
Total Taxes \$4,345

Legal Subdiv ROCK CREEK PALISADES
County Tax \$3,894
Lot 39A
Short Sale No

Foreclosure No
REO/Bank Owned No

Interior Features/Amenities

Basement Fully Finished, Outside Entrance, Rear Entrance

Information Courtesy of Realty 1 Maryland, LLC. Copyright 2021 Bright MLS. Information is believed to be accurate, but should not be relied upon without verification. Accuracy of square footage, lot size and other information is not guaranteed. This website courtesy of Barbara Ciment, Realtor, Long & Foster Real Estate, Inc.



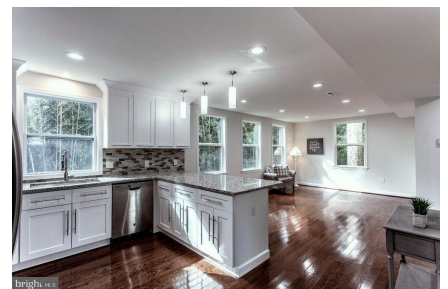
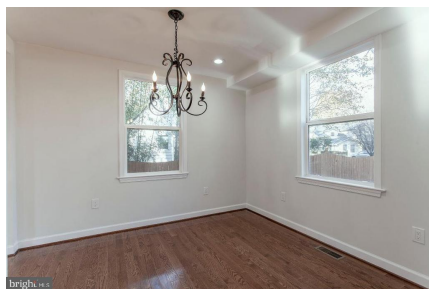
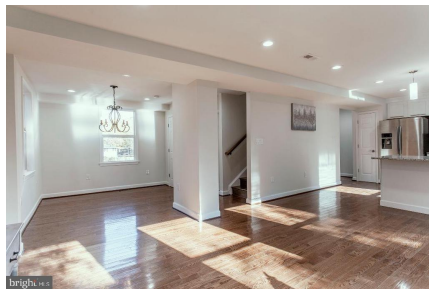
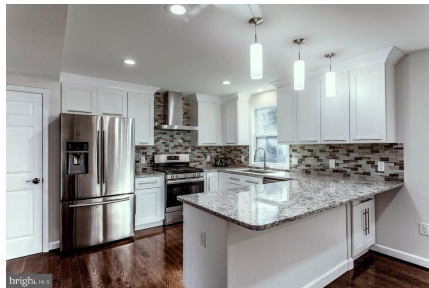
CIMENT & SHIELDS TEAM

Barbara Ciment, Associate Broker

LONG & FOSTER REAL ESTATE

(C) 301-346-9126 (O) 301-424-0900
 barbara@ciment.com www.ciment.com





CIMENT & SHIELDS TEAM

Barbara Ciment, Associate Broker

LONG & FOSTER REAL ESTATE

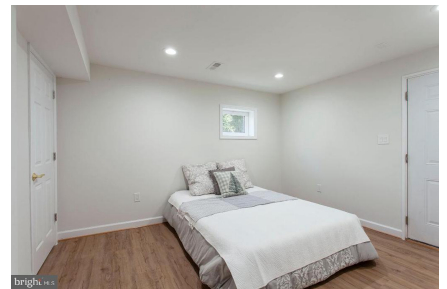
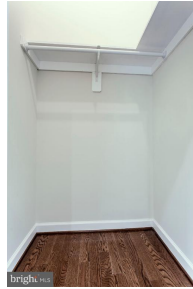
(C) 301-346-9126

(O) 301-424-0900

barbara@ciment.com

www.ciment.com

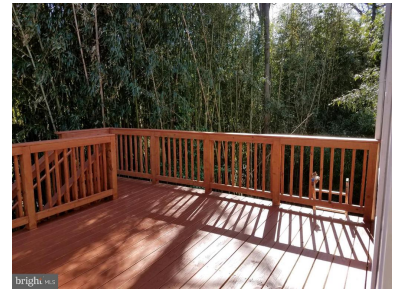
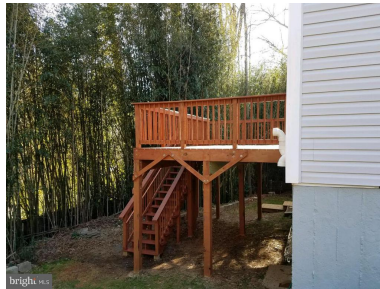
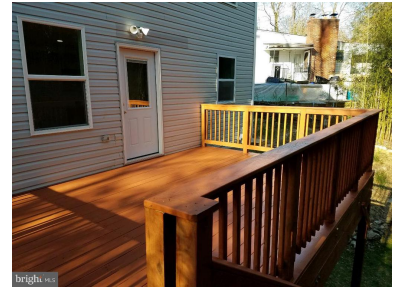
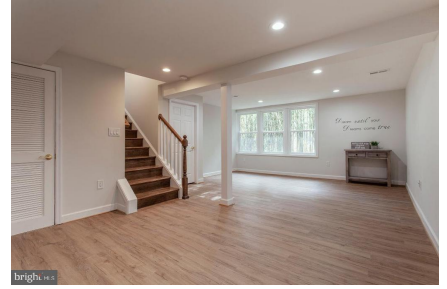




CIMENT & SHIELDS TEAM

Barbara Ciment, Associate Broker
LONG & FOSTER REAL ESTATE
REALTOR® EQUAL HOUSING OPPORTUNITY
(C) 301-346-9126 (O) 301-424-0900
barbara@ciment.com www.ciment.com





CIMENT & SHIELDS TEAM

Barbara Ciment, Associate Broker

LONG & FOSTER REAL ESTATE

(C) 301-346-9126

(O) 301-424-0900

barbara@ciment.com

www.ciment.com

