

Recent Home Sale: 3417 W UNIVERSITY BLVD #302 - \$219,000



Remarks OPEN Sunday June 16 from 2:00 - 4:00 PM. Stunning remodeled Kensington open concept condo features vaulted wood ceilings, new windows, remodeled bathroom, beautiful hardwoods throughout kitchen w/granite counters and gas cooking, 3 bedrooms with abundant storage. Large balcony overlooks green space. Pet friendly (no size restrictions), 1 assigned parking space and extra storage. Community updating building common areas and replacing balcony decking with Trex (no special assessment for this work). Quiet Community convenient to all Historic Kensington offers - Shopping, restaurants, farmers market, Safeway, nearby Westfield Wheaton with Target & Costco, parks and commuting options.

Rooms	Total	Main
Bedrooms	3	3
Full Baths	1	1
Half Baths	0	0

Basic Information

Address 3417 W UNIVERSITY BLVD #302
City/Town KENSINGTON
State MD
Zip Code 20895
County MONTGOMERY
Type Unit/Flat/Apartment
MLS# MDMC660810

Ownership Condominium
Style Contemporary
Adv Subdivision KENSINGTON TERRACE
DOM-Prop 29
Year Built 1962
Beds 3
Baths 1

Levels 1
Total Fin Sq Ft 893
Contract Date 2019-06-21
Close Date 2019-08-01
Close Price \$219,000
Seller Subsidy \$6,570

Exterior/Construction Features/Utilities

Exterior Brick
Water Type Public
Sewer Public Sewer

Heating 90% Forced Air
Cooling Central A/C
Parking Assigned

Spaces 1

Tax/Legal Information

Tax ID # 161302094362
Tax Year 2019
Tax Assessment Value \$160,000
Total Taxes \$1,874

Legal Subdiv KENSINGTON TERRACE
CODM
County Tax \$1,819
Short Sale No

Foreclosure No
REO/Bank Owned No

Interior Features/Amenities

Appliances Dishwasher, Disposal, Oven/Range - Gas, Refrigerator, Water Heater

Int. Style Dining Area, Exposed Beams, Floor Plan - Open, Kitchen - Galley, Upgraded Countertops, Window Treatments, Wood Floors

Security Main Entrance Lock

HOA/Condo/Coop Info

Condo/Coop Fee \$465

Amenities None

Project Name KENSINGTON TERRA

Information Courtesy of Tower Hill Realty. Copyright 2021 Bright MLS. Information is believed to be accurate, but should not be relied upon without verification. Accuracy of square footage, lot size and other information is not guaranteed. This website courtesy of Barbara Ciment, Realtor, Long & Foster Real Estate, Inc.



CIMENT & SHIELDS TEAM

Barbara Ciment, Associate Broker

LONG & FOSTER REAL ESTATE

(C) 301-346-9126 (O) 301-424-0900
 barbara@ciment.com www.ciment.com





Quiet Community

Garden Style Condos



Open Space Living



Gorgeous Vaulted Wood Ceilings



Large Living Room - Hardwood Flooring



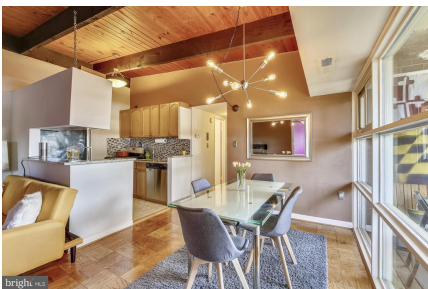
Dining Room overlooking Balcony



View of Green Space From Balcony



View Towards Living Room and Third Bedroom



Gorgeous Open Concept Condo



Updated Kitchen w/Granite and Gas Cooking



Great Cabinet Space



Sunny Master Bedroom



All Bedrooms have large closets



Updated Full Bathroom



CIMENT & SHIELDS TEAM

Barbara Ciment, Associate Broker

LONG & FOSTER REAL ESTATE

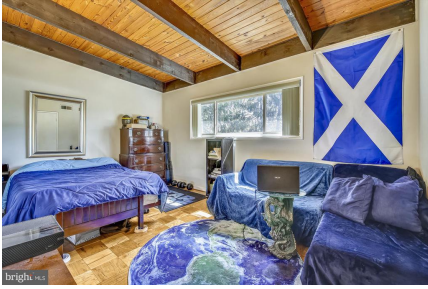
(C) 301-346-9126

(O) 301-424-0900

barbara@ciment.com

www.ciment.com





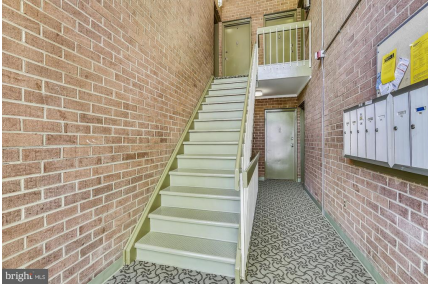
Bedroom Two



Third Bedroom



Hallway



Recently Remodeled Common Space



Kensington Antiques Row



Marc Train Station



Popular Nearby Pizza Restaurant



Kensington Safeway



CIMENT & SHIELDS TEAM

Barbara Ciment, Associate Broker

LONG & FOSTER
REALTOR® REAL ESTATE

(C) 301-346-9126

(O) 301-424-0900

barbara@ciment.com

www.ciment.com

