

# Recent Home Sale: 3320 W UNIVERSITY BLVD - \$407,000



**Remarks** Price reduced. Updated 3 level Cape Cod. Great location close to major shops and main roads and right next Kensington Heights Parks. Wheaton Metro Station 5 min drive or 20-minute walk. mother in law suites with separate entrance, kitchen and bathroom. Driveway has been extended for new owners to easily enter and exit the property from the main road. Fully updated last year. Fresh paint, tile in the basement, Newly refinished hardwood floors. Great deck and private backyard for entertainment.

Rooms	Total	Main	Upper 1	Lower 1
Bedrooms	4	2	1	1
Full Baths	3	1	1	1
Half Baths				

## Basic Information

**Address** 3320 W UNIVERSITY BLVD  
**City/Town** KENSINGTON  
**State** MD  
**Zip Code** 20895  
**County** MONTGOMERY  
**Type** Detached  
**MLS#** MDMC670608  
**Ownership** Fee Simple

**Style** Cape Cod  
**Adv Subdivision** KENSINGTON HEIGHTS  
**DOM-Prop** 58  
**Year Built** 1950  
**Beds** 4  
**Baths** 3  
**Lot Size** 8,163  
**Acres** 0

**Tax Living Area** 1,862  
**Levels** 3+  
**Total Fin Sq Ft** 1,862  
**Contract Date** 2019-09-25  
**Close Date** 2019-10-16  
**Close Price** \$407,000  
**Seller Subsidy** \$1,215

## Exterior/Construction Features/Utilities

**Exterior** Brick  
**Water Type** Public

**Sewer** Public Sewer  
**Heating** Central

**Cooling** Central A/C

## Tax/Legal Information

**Tax ID #** 161301201574  
**Tax Year** 2019  
**Tax Assessment Value** \$393,700  
**Total Taxes** \$5,042

**Legal Subdiv** KENSINGTON HEIGHTS  
**County Tax** \$4,591  
**Lot** P1  
**Short Sale** No

**Foreclosure** No  
**REO/Bank Owned** No

## Interior Features/Amenities

**Int. Style** 2nd Kitchen, Ceiling Fan(s), Entry Level Bedroom, Kitchen - Eat-In, Kitchen - Table Space, Kitchenette, Wood Floors

**Fireplaces** 1  
**Fireplace** Brick  
**Basement** Full, Fully Finished, Heated, Interior Access, Outside Entrance

Information Courtesy of Irvin Realty LLC. Copyright 2021 Bright MLS. Information is believed to be accurate, but should not be relied upon without verification. Accuracy of square footage, lot size and other information is not guaranteed. This website courtesy of Barbara Ciment, Realtor, Long & Foster Real Estate, Inc.



**CIMENT & SHIELDS TEAM**

**Barbara Ciment, Associate Broker**



(C) 301-346-9126 (O) 301-424-0900  
 barbara@ciment.com www.ciment.com





**CIMENT & SHIELDS TEAM**

**Barbara Ciment, Associate Broker**

**LONG & FOSTER REAL ESTATE**

(C) 301-346-9126

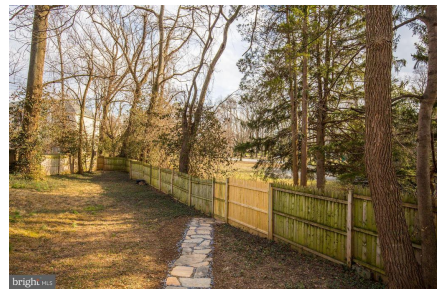
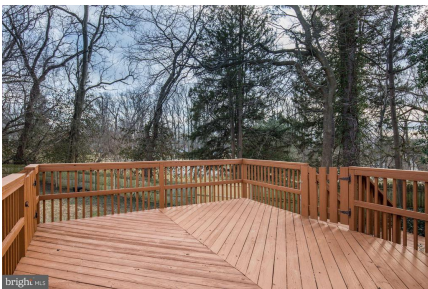
(O) 301-424-0900

[barbara@ciment.com](mailto:barbara@ciment.com)

[www.ciment.com](http://www.ciment.com)







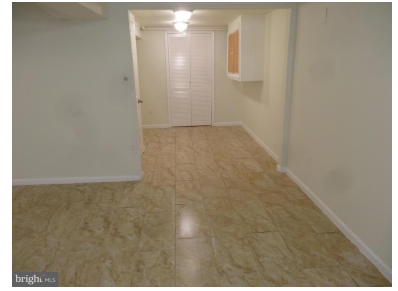
**CIMENT & SHIELDS TEAM**

**Barbara Ciment, Associate Broker**

**LONG & FOSTER REAL ESTATE**

(C) 301-346-9126 (O) 301-424-0900  
barbara@ciment.com www.ciment.com





 **CIMENT & SHIELDS TEAM** 

**Barbara Ciment, Associate Broker**  
**LONG & FOSTER REAL ESTATE**   
(C) 301-346-9126 (O) 301-424-0900  
[barbara@ciment.com](mailto:barbara@ciment.com) [www.ciment.com](http://www.ciment.com)

