

Recent Home Sale: 3115 JENNINGS RD - \$492,000



Remarks Quintessential cottage-style Cape Cod welcomes you in sought-after Okaland Terrace subdivision. With hardwood floors throughout the main and upper floor, this three bedroom, three bathroom home sets the right tone to entertain your friends and neighbors. Sun-filled living room with a wall of built-ins and a sweet window seat gives you a view out onto your new community. Expansive eat-in kitchen, large enough for a dining table to enjoy your favorite meal, or why not have that meal outside onto your gorgeous deck overseeing your leveled and large lot (over 11,000 square feet) and fenced-in backyard! The main level also features two roomy bedrooms and an updated full bathroom. Upstairs you will find your en-suite owners bedroom with an over-sized walk-in closet and wonderful sitting area to enjoy a cup of coffee or to just enjoy your own quiet space. Your owners suite gives you a feeling of comfort and warmth with its sloping eaves and gable end windows. Dormers create additional floor space in the area tucked under the roof, helping convert a once unused attic into fabulous livable space. Downstairs is your finished basement, large enough to entertain and also have room left over for an office space. A generous full bath and private rear entrance to the fenced-in backyard is yet another box you can check off in this lovely home. Easy walk to quaint downtown Kensington, the MARC train and the well-known Kensington Farmer's Market, open Saturdays year-round at the historic train station on Howard Avenue. Highly sought-after Montgomery County school cluster? Check! This cozy floorplan leaves you with a warm feeling. Nothing says "home sweet home" quite like a Cape Cod cottage.

Rooms	Total	Main	Upper 1	Lower 1
Bedrooms	3	2	1	
Full Baths	3	1	1	1
Half Baths				

Basic Information

Address 3115 JENNINGS RD
City/Town KENSINGTON
State MD
Zip Code 20895
County MONTGOMERY
Type Detached
MLS# MDMC678600
Ownership Fee Simple

Style Cape Cod
Adv Subdivision OAKLAND TERRACE
DOM-Prop 11
Year Built 1943
Beds 3
Baths 3
Lot Size 11,171
Acres 0

Tax Living Area 1,680
Levels 3+
Total Fin Sq Ft 1,806
Contract Date 2019-09-23
Close Date 2019-10-25
Close Price \$492,000

Exterior/Construction Features/Utilities

Lot Desc Open, Private
Exterior Brick, Combination
Water Type Public

Sewer Public Sewer
Heating Forced Air
Cooling Central A/C

Parking Asphalt Driveway

Tax/Legal Information

Tax ID # 161301137422
Tax Year 2019
Tax Assessment Value \$373,500
Total Taxes \$4,803

Legal Subdiv OAKLAND TERRACE
County Tax \$4,334
Lot 26
Short Sale No

Foreclosure No
REO/Bank Owned No

Interior Features/Amenities

Int. Style Built-Ins, Combination
 Kitchen/Dining, Kitchen - Table Space, Walk-in
 Closet(s), Wood Floors, Stall Shower

Basement Fully Finished, Outside Entrance



CIMENT & SHIELDS TEAM

Barbara Ciment, Associate Broker



(C) 301-346-9126 (O) 301-424-0900
 barbara@ciment.com www.ciment.com



Recent Home Sale: 3115 JENNINGS RD - \$492,000

Rooms/Levels/Flooring

Bathroom 1	Main	Bedroom 1	Main
Bedroom 2	Main	Kitchen	Main
Living Room	Main	Primary Bedroom	Upper 1
Basement	Lower 1		

Information Courtesy of TTR Sotheby's International Realty. Copyright 2021 Bright MLS. Information is believed to be accurate, but should not be relied upon without verification. Accuracy of square footage, lot size and other information is not guaranteed. This website courtesy of Barbara Ciment, Realtor, Long & Foster Real Estate, Inc.



**CIMENT
& SHIELDS** TEAM

Barbara Ciment, Associate Broker



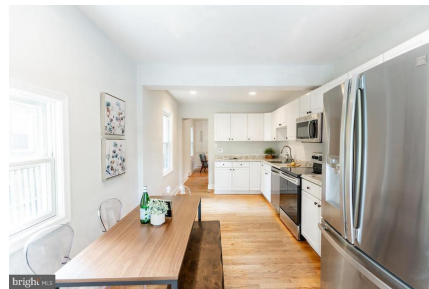
(C) 301-346-9126

(O) 301-424-0900

barbara@ciment.com

www.ciment.com





CIMENT & SHIELDS TEAM

Barbara Ciment, Associate Broker

LONG & FOSTER REAL ESTATE

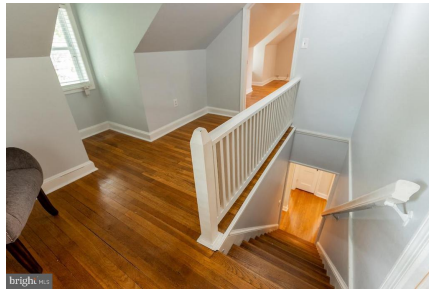
(C) 301-346-9126

(O) 301-424-0900

barbara@ciment.com

www.ciment.com





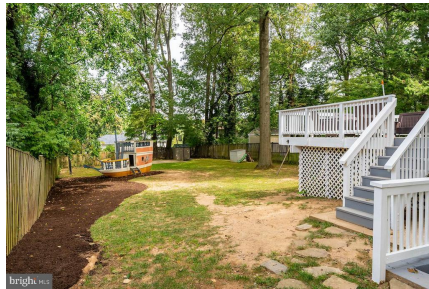
CIMENT & SHIELDS TEAM

Barbara Ciment, Associate Broker

LONG & FOSTER REAL ESTATE

(C) 301-346-9126 (O) 301-424-0900
barbara@ciment.com www.ciment.com





CIMENT & SHIELDS TEAM

Barbara Ciment, Associate Broker

LONG & FOSTER REAL ESTATE

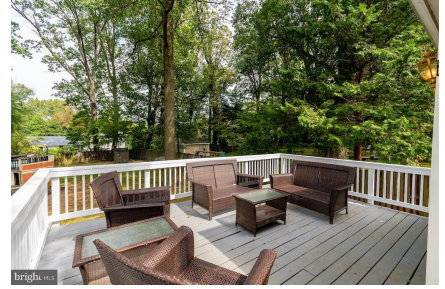
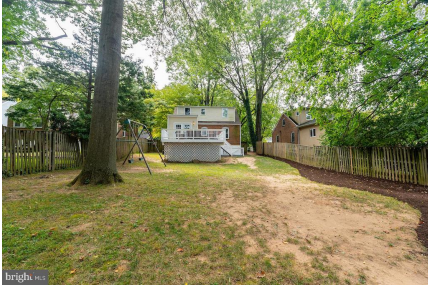
(C) 301-346-9126

(O) 301-424-0900

barbara@ciment.com

www.ciment.com





CIMENT & SHIELDS TEAM

Barbara Ciment, Associate Broker

LONG & FOSTER REAL ESTATE

(C) 301-346-9126

(O) 301-424-0900

barbara@ciment.com

www.ciment.com

