

Recent Home Sale: 3356 PROVIDER WAY - \$429,968



Remarks Brand New - 3 Level Pulte Townhomes at Century Row located just a short walk from the Germantown town center, transit center, Regal Movies, and less than 1 mi from 270, this is where location, lifestyle, and convenience converge. Own a Townhome for the price of a condo in Germantown's hottest new location. Enter the Burton townhome on the ground level, which offers a bedroom with en suite bath, perfect for visitors or for home office use. Upstairs, you'll find a rear kitchen with a spacious pantry. The home has an open concept that flows through to your living area and dining space. On this same level, enjoy outdoor living on your deck located off the kitchen. All located just minutes from Safeway, Wegmans and future Topgolf! Call (240) 453-4602 for more information!

Rooms	Total	Main	Upper 1	Upper 2
Bedrooms	3	1	0	2
Full Baths	3	1	0	2
Half Baths	1		1	

Basic Information

Address 3356 PROVIDER WAY
City/Town GERMANTOWN
State MD
Zip Code 20874
County MONTGOMERY
Type Interior Row/Townhouse
MLS# MDMC664532
Ownership Fee Simple

Style Contemporary
Model BURTON
Adv Subdivision CENTURY ROW
DOM-Prop 1
Year Built 2019
Beds 3
Baths 3/1
Lot Size 0

Acres 0
Levels 3+
Total Fin Sq Ft 1,563
Contract Date 2019-06-13
Close Date 2019-06-30
Close Price \$429,968
Seller Subsidy \$13,925

Exterior/Construction Features/Utilities

Exterior Brick, Vinyl Siding
Water Type Public
Sewer Public Sewer
Heating None

Cooling Ceiling Fan(s), Central A/C
Garage Spaces 1.00
Parking Paved Driveway, Assigned
Spaces 1

Porch/Patio Deck(s)
Other Features Sidewalks, Street Lights

Tax/Legal Information

Tax ID # 0000
Tax Year 2019
Tax Assessment Value \$429,968

Total Taxes \$4,800
Short Sale No
Foreclosure No

REO/Bank Owned No

Interior Features/Amenities

Appliances Dishwasher, Disposal, Microwave, Range Hood, Refrigerator

Int. Style Carpet, Ceiling Fan(s), Dining Area, Family Room Off Kitchen, Floor Plan - Open, Pantry, Recessed Lighting, Walk-in Closet(s), Wood Floors

Windows Energy Efficient
Wall/Ceiling 9'+ Ceilings
Garage Garage - Rear Entry, Garage Door Opener

Rooms/Levels/Flooring

Bedroom 3 Main Carpet
Family Room Upper 1
Laundry Upper 2

Foyer Main
Kitchen Upper 1
Loft Upper 3 Carpet



CIMENT & SHIELDS TEAM

Barbara Ciment, Associate Broker



(C) 301-346-9126 (O) 301-424-0900
 barbara@ciment.com www.ciment.com



Recent Home Sale: 3356 PROVIDER WAY - \$429,968

HOA/Condo/Coop Info

HOA Fee \$110

Amenities Jog/Walk Path, Basketball Courts, **Project Name** NONE AVAILABLE
Tot Lots/Playground

Information Courtesy of Monument Sotheby's International Realty. Copyright 2021 Bright MLS. Information is believed to be accurate, but should not be relied upon without verification. Accuracy of square footage, lot size and other information is not guaranteed. This website courtesy of Barbara Ciment, Realtor, Long & Foster Real Estate, Inc.



**CIMENT
& SHIELDS** TEAM

Barbara Ciment, Associate Broker

LONG & FOSTER
REALTOR® REAL ESTATE

(C) 301-346-9126

(O) 301-424-0900

barbara@ciment.com

www.ciment.com





Illustrative purposes only.



Illustrative purposes only.



Illustrative purposes only.



Illustrative purposes only.



Illustrative purposes only.



Illustrative purposes only.



Illustrative purposes only.



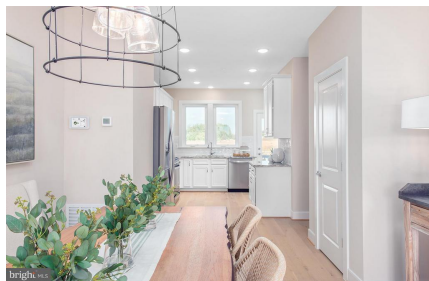
Illustrative purposes only.



Illustrative purposes only.



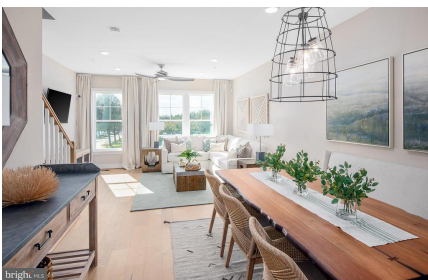
Illustrative purposes only.



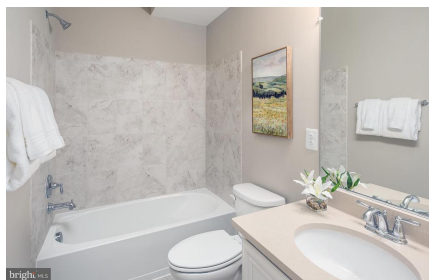
Illustrative purposes only.



Illustrative purposes only.



Illustrative purposes only.



Illustrative purposes only.



Illustrative purposes only.



CIMENT & SHIELDS TEAM

Barbara Ciment, Associate Broker

LONG & FOSTER REAL ESTATE

(C) 301-346-9126

(O) 301-424-0900

barbara@ciment.com

www.ciment.com





Illustrative purposes only.



Illustrative purposes only.



Illustrative purposes only.



Illustrative purposes only.



Illustrative purposes only.



Illustrative purposes only.



Illustrative purposes only.



Community - Illustrative purposes



CIMENT & SHIELDS TEAM

Barbara Ciment, Associate Broker

LONG & FOSTER REAL ESTATE

(C) 301-346-9126

(O) 301-424-0900

barbara@ciment.com

www.ciment.com

