

Recent Home Sale: 20629 BOLAND FARM RD - \$1,400,000



Remarks Unique property combines residential and commercial uses. Presently used as Medical offices and Luxury residence. 4500 est. sq/ft residence and 6500 est. sq/ft offices on two levels with separate entrances could be used to two businesses. 25+ parking spaces. Sale contingent on purchase of medical equipment and certifications.

Rooms	Total	Main	Upper 1	Upper 2	Lower 1
Bedrooms	5	0	4	1	0
Full Baths	8	2	3	1	2
Half Baths	0	0	0	0	0

Basic Information

Address 20629 BOLAND FARM RD
City/Town GERMANTOWN
State MD
Zip Code 20874
County MONTGOMERY
Type Detached
MLS# 1002243226
Ownership Fee Simple

Style Contemporary
Adv Subdivision MARY J BOLAND
DOM-Prop 310
Year Built 1995
Beds 5
Baths 8
Lot Size 24,225
Acres 1

Tax Living Area 7,907
Levels 3
Total Fin Sq Ft 7,907
Contract Date 2019-06-20
Close Date 2020-09-28
Close Price \$1,400,000

Exterior/Construction Features/Utilities

Exterior Brick
Water Type Public
Sewer Public Sewer

Hot Water Electric
Heating Heat Pump(s)
Cooling Central A/C

Garage Spaces 2.00
Parking Handicap Parking, Paved Parking

Tax/Legal Information

Tax ID # 160903047093
Tax Year 2017
Tax Assessment Value \$1,622,500
Total Taxes \$18,065

Legal Subdiv MARY J BOLAND SUB
County Tax \$16,896
City/Town Taxes \$0
Lot 95

Short Sale No
Foreclosure No
REO/Bank Owned No

Interior Features/Amenities

Int. Style Kitchen - Gourmet, Floor Plan - Open
Entryway Foyer

Fireplaces 1

Basement Rear Entrance, Outside Entrance, Fully Finished, Heated, Improved, Space For Rooms
Garage Garage - Front Entry

Information Courtesy of Heymann Realty, LLC. Copyright 2021 Bright MLS. Information is believed to be accurate, but should not be relied upon without verification. Accuracy of square footage, lot size and other information is not guaranteed. This website courtesy of Barbara Ciment, Realtor, Long & Foster Real Estate, Inc.



CIMENT & SHIELDS TEAM

Barbara Ciment, Associate Broker



(C) 301-346-9126 (O) 301-424-0900
 barbara@ciment.com www.ciment.com





Exterior (Front)



Exterior (General)



Exterior (Rear)



main entry



Main Living area with hall



Living and Dining



Living Room



Family Room



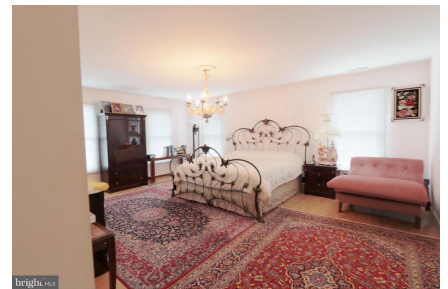
Dining Room



Kitchen



Kitchen



Bedroom (Master)



Bedroom (Master)



bedroom suite above garage



Bedroom



CIMENT & SHIELDS TEAM

Barbara Ciment, Associate Broker

LONG & FOSTER REAL ESTATE

(C) 301-346-9126

(O) 301-424-0900

barbara@ciment.com

www.ciment.com





Bedroom



Loft living room suite with bed and bath



Doctors consulting room



Main level offices



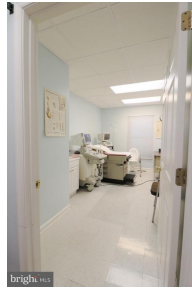
office



Main Level recovery



Main Level Surgery



Main Level ultra sound



Main Level exam room



Main level X ray



Main Level reception



Lower level reception



Lower level office hall



Lower level office off reception



Lower level exam



CIMENT & SHIELDS TEAM

Barbara Ciment, Associate Broker

LONG & FOSTER REAL ESTATE

(C) 301-346-9126

(O) 301-424-0900

barbara@ciment.com

www.ciment.com

