

## Recent Home Sale: 20526 AMETHYST LN - \$314,900



**Remarks** An Amazing Townhome that will not last long in the Churchill Town/Waters Landing community. Pride of ownership throughout comes with this beautiful and rare double master layout. The main level gives you the spacious and open living everyone is looking for, a newly renovated kitchen offers plenty of storage and smart functionality. Built in pantry, stainless steel appliances and solid counter surfaces rounds out this custom designed kitchen. Upstairs there are two master en suites that are spacious, private and full of light. Downstairs in the basement there is huge family room with lots of light, a second warm and cozy fireplace, half bath and plenty of storage. The storage throughout the whole house is amazing, the attic has access with a drop down ladder and ample storage. The basement has plenty of storage and a nice workshop. All of this in quiet and peaceful community.

Rooms	Total	Main	Upper 1	Lower 1
Bedrooms	2		2	
Full Baths	2		2	
Half Baths	2	1		1

### Basic Information

**Address** 20526 AMETHYST LN  
**City/Town** GERMANTOWN  
**State** MD  
**Zip Code** 20874  
**County** MONTGOMERY  
**Type** Interior Row/Townhouse  
**MLS#** MDMC662172  
**Ownership** Fee Simple

**Style** Colonial  
**Adv Subdivision** CHURCHILL TOWN SECTOR  
**DOM-Prop** 94  
**Year Built** 1985  
**Beds** 2  
**Baths** 2/2  
**Lot Size** 1,440

**Acres** 0  
**Tax Living Area** 1,646  
**Levels** 3+  
**Total Fin Sq Ft** 1,646  
**Contract Date** 2019-09-01  
**Close Date** 2019-09-24  
**Close Price** \$314,900  
**Seller Subsidy** \$9,450

### Exterior/Construction Features/Utilities

**Exterior** Mixed  
**Roof** Asphalt  
**Water Type** Public

**Sewer** Public Sewer  
**Heating** Forced Air  
**Cooling** Central A/C

**Porch/Patio** Deck(s)  
**Other Features** Extensive Hardscape

### Tax/Legal Information

**Tax ID #** 160202436723  
**Tax Year** 2019  
**Tax Assessment Value** \$251,300  
**Total Taxes** \$3,142

**Legal Subdiv** CHURCHILL TWN SECTOR TH  
**County Tax** \$2,894  
**Lot** 530  
**Short Sale** No  
**Foreclosure** No  
**REO/Bank Owned** No

### Interior Features/Amenities

**Appliances** Built-In Microwave, Dishwasher, Disposal, Dryer, Freezer, Oven/Range - Electric, Stainless Steel Appliances, Refrigerator, Washer, Water Heater  
**Int. Style** Bar, Carpet, Combination Kitchen/Dining, Dining Area, Kitchen - Eat-In, Stain/Lead Glass, Upgraded Countertops, Skylight(s)

**Doors** Sliding Glass  
**Windows** Double Pane  
**Security** Security System, Smoke Detector  
**Fireplaces** 2  
**Fireplace** Fireplace - Glass Doors, Insert

**Basement** Full, Fully Finished, Improved

### HOA/Condo/Coop Info

**HOA Fee** \$97

Information Courtesy of Realty Advantage. Copyright 2021 Bright MLS. Information is believed to be accurate, but should not be relied upon without verification. Accuracy of square footage, lot size and other information is not guaranteed. This website courtesy of Barbara Ciment, Realtor, Long & Foster Real Estate, Inc.



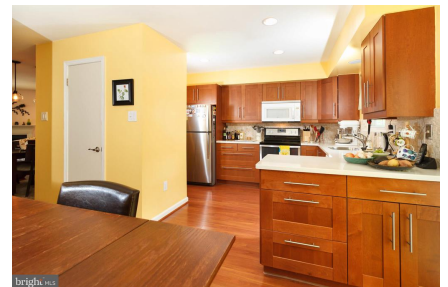
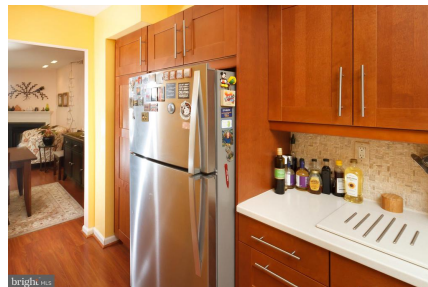
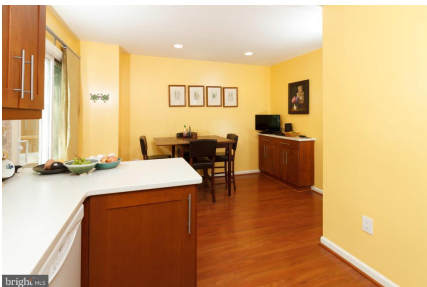
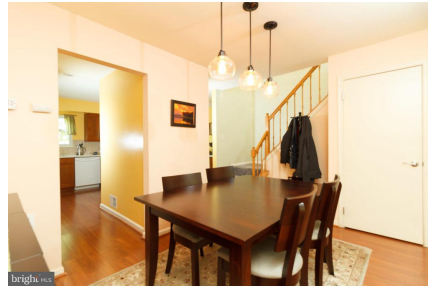
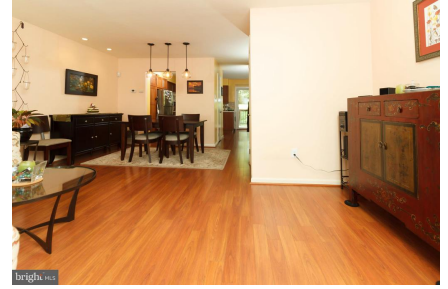
**CIMENT & SHIELDS TEAM**

**Barbara Ciment, Associate Broker**



(C) 301-346-9126 (O) 301-424-0900  
 barbara@ciment.com www.ciment.com





**CIMENT & SHIELDS TEAM**

**Barbara Ciment, Associate Broker**

**LONG & FOSTER REAL ESTATE**

(C) 301-346-9126

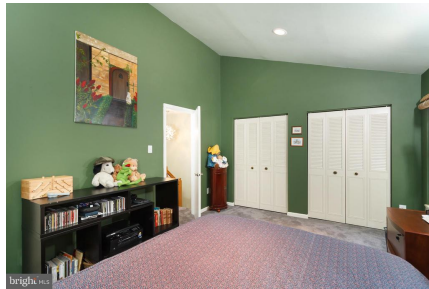
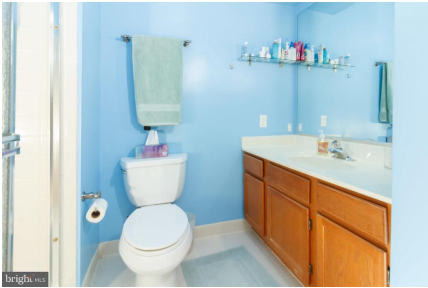
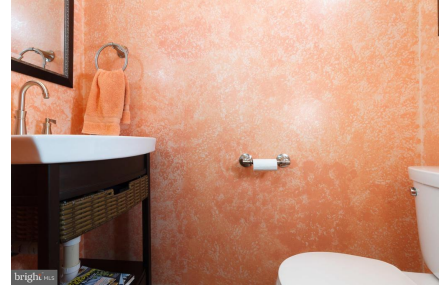
(O) 301-424-0900

barbara@ciment.com

www.ciment.com







**CIMENT & SHIELDS TEAM**

**Barbara Ciment, Associate Broker**

**LONG & FOSTER REAL ESTATE**

(C) 301-346-9126

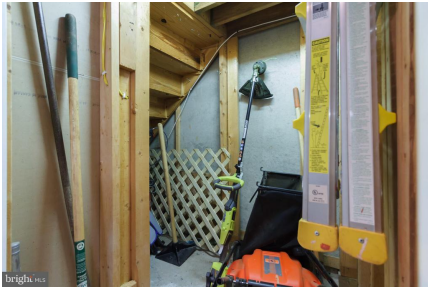
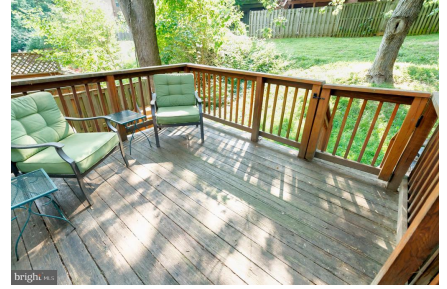
(O) 301-424-0900

barbara@ciment.com

www.ciment.com







**CIMENT & SHIELDS TEAM**

**Barbara Ciment, Associate Broker**

**LONG & FOSTER**  
REALTOR® REAL ESTATE

(C) 301-346-9126

(O) 301-424-0900

[barbara@ciment.com](mailto:barbara@ciment.com)

[www.ciment.com](http://www.ciment.com)

