

Recent Home Sale: 20 HIGHSTREAM CT #700 - \$309,000



Remarks Open SAT, 5/25, 1-4pm. This Manchester Farm townhome features a bright and open floorplan with three updated bedrooms, two and a half baths! Check out the many recent features - newer roof, HVAC, and windows. The updated kitchen, with a pass-through window, lets in the light on the stainless appliances. A wood burning fireplace and five-inch plank flooring complete the appealing look of the first floor. The second floor features vaulted ceilings, laundry room and two bedrooms including a second master. Don't overlook the private third-floor master bedroom suite. Two skylights allow plenty of natural light in this end-unit. New paint and carpet throughout the upper floors. Perfect green space out front with endless patio potential, if desired! The neighborhood has the largest private swimming pool in Montgomery County, a community center, several tot lots and walking trails. It is within easy access of I-270 and the Intercounty Connector, MARC rail stations, the Germantown Town Center and Clarksburg Outlets. Condo fee is VERY LOW at \$54/month and includes lawn care and sidewalk snow removal.

Rooms	Total	Main	Upper 1	Upper 2
Bedrooms	3	0	2	1
Full Baths	2	0	1	1
Half Baths	1	1	0	0

Basic Information

Address 20 HIGHSTREAM CT #700
City/Town GERMANTOWN
State MD
Zip Code 20874
County MONTGOMERY
Type Interior Row/Townhouse
MLS# MDMC659416

Ownership Condominium
Style Traditional
Adv Subdivision MANCHESTER FARM
DOM-Prop 7
Year Built 1993
Beds 3
Baths 2/1

Tax Living Area 1,610
Levels 3+
Total Fin Sq Ft 1,610
Contract Date 2019-05-29
Close Date 2019-07-03
Close Price \$309,000

Exterior/Construction Features/Utilities

Exterior Other
Water Type Public

Sewer Public Sewer
Heating Heat Pump(s)

Cooling Heat Pump(s), Central A/C, Ceiling Fan(s)

Tax/Legal Information

Tax ID # 160203049241
Tax Year 2019
Tax Assessment Value \$223,333
Total Taxes \$2,773

Legal Subdiv WOODFIELD AT MANCHESTER
County Tax \$2,536
Short Sale No

Foreclosure No
REO/Bank Owned No

Interior Features/Amenities

Appliances Exhaust Fan, Dryer, Disposal, Dishwasher, Oven/Range - Electric, Washer, Water Heater

Int. Style Dining Area, Floor Plan - Open, Kitchen - Table Space, Primary Bath(s)
TV/Cable Cable TV Available, Fiber Optics Available

HOA/Condo/Coop Info

HOA Fee \$79
Condo/Coop Fee \$54

Amenities Community Center, Jog/Walk Path, Pool - Outdoor

Information Courtesy of RLAH @properties. Copyright 2021 Bright MLS. Information is believed to be accurate, but should not be relied upon without verification. Accuracy of square footage, lot size and other information is not guaranteed. This website courtesy of Barbara Ciment, Realtor, Long & Foster Real Estate, Inc.



CIMENT & SHIELDS TEAM

Barbara Ciment, Associate Broker



(C) 301-346-9126 (O) 301-424-0900
 barbara@ciment.com www.ciment.com

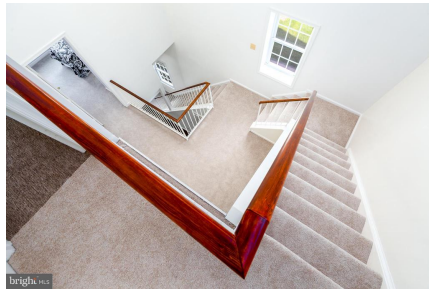
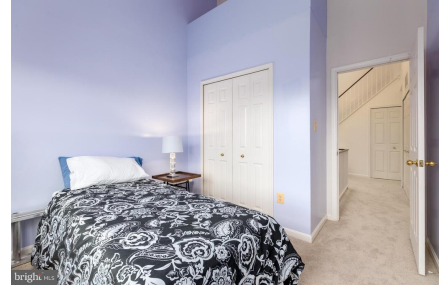




CIMENT & SHIELDS TEAM

Barbara Ciment, Associate Broker
LONG & FOSTER REAL ESTATE
(C) 301-346-9126 (O) 301-424-0900
barbara@ciment.com www.ciment.com





CIMENT & SHIELDS TEAM

Barbara Ciment, Associate Broker
LONG & FOSTER REAL ESTATE
(C) 301-346-9126 (O) 301-424-0900
barbara@ciment.com www.ciment.com





CIMENT & SHIELDS TEAM

Barbara Ciment, Associate Broker

LONG & FOSTER
REALTOR® REAL ESTATE

(C) 301-346-9126

(O) 301-424-0900

barbara@ciment.com

www.ciment.com

