

Recent Home Sale: 19945 STONEY POINT WAY - \$233,000



Remarks GORGEOUS HOME IN PRIME LOCATION! THIS MOVE IN READY HOME FEATURES 2 SPACIOUS BEDROOMS 2 CHARMING BATHS! IMMACULATE FLOORING ON ALL LEVELS. BRIGHT AND AIRY LIVING ROOM AREA! IMPECCABLE KITCHEN WITH SEPRATE DINNING ROOM. ESQUISITE CHARACTERISTICS ALL AROUND. WALK OUT TO THE FENCED BACKYARD AND BRICK PATIO, GREAT FOR ENTERTAINING!

Rooms	Total	Upper 1
Bedrooms	2	2
Full Baths	2	2
Half Baths		

Basic Information

Address 19945 STONEY POINT WAY
City/Town GERMANTOWN
State MD
Zip Code 20876
County MONTGOMERY
Type Interior Row/Townhouse
MLS# MDMC681562
Ownership Fee Simple

Style Colonial
Adv Subdivision BRANDERMILL
DOM-Prop 8
Year Built 1985
Beds 2
Baths 2
Lot Size 1,400
Acres 0

Tax Living Area 1,148
Levels 2
Total Fin Sq Ft 1,148
Contract Date 2019-10-09
Close Date 2019-10-24
Close Price \$233,000

Exterior/Construction Features/Utilities

Exterior Other
Water Type Public
Sewer Public Sewer

Hot Water Electric
Heating Heat Pump(s)
Cooling Central A/C

Parking Assigned
Spaces 1

Tax/Legal Information

Tax ID # 160902048638
Tax Year 2019
Tax Assessment Value \$204,467
Total Taxes \$2,512

Legal Subdiv BRANDERMILL
County Tax \$2,265
Lot 141
Short Sale No

Foreclosure No
REO/Bank Owned No

HOA/Condo/Coop Info

HOA Fee \$114

Information Courtesy of The Agency DC. Copyright 2021 Bright MLS. Information is believed to be accurate, but should not be relied upon without verification. Accuracy of square footage, lot size and other information is not guaranteed. This website courtesy of Barbara Ciment, Realtor, Long & Foster Real Estate, Inc.



CIMENT & SHIELDS TEAM

Barbara Ciment, Associate Broker



(C) 301-346-9126 (O) 301-424-0900
barbara@ciment.com www.ciment.com





CIMENT & SHIELDS TEAM

Barbara Ciment, Associate Broker

LONG & FOSTER REAL ESTATE

(C) 301-346-9126

(O) 301-424-0900

barbara@ciment.com

www.ciment.com

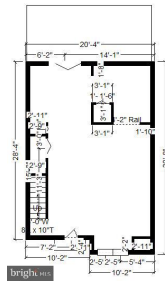




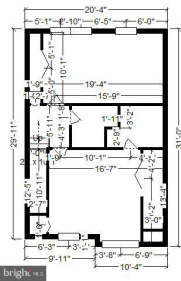
brighthomes, Inc. © TruPlace, Inc.



brighthomes, Inc. © TruPlace, Inc.



brighthomes, Inc.



brighthomes, Inc.



CIMENT & SHIELDS TEAM

Barbara Ciment, Associate Broker

LONG & FOSTER REAL ESTATE

(C) 301-346-9126

(O) 301-424-0900

barbara@ciment.com

www.ciment.com

