

Recent Home Sale: 19013 PARTRIDGE WOOD DR - \$250,000



Remarks Location, location, location! This stunning 3+ level Townhouse offers quality details throughout in a commuters DREAM location! Enjoy the open floor plan, offering 3 Bedrooms, 2 full Bathrooms, and 1,960+ square ft. of space. Chefs Kitchen featuring granite counter tops and perfect breakfast bar that opens into the living room. Enjoy outdoor entertaining with easy access to the private deck and patio overlooking nature's beauty. The finished walk-out lower level offers in-law/bonus room options with a full bathroom. Master bedroom with sitting area and ample storage space. Live just minutes from Germantown Metro Station, shopping, restaurants, and SO much more! The perfect combination of charm, convenience, and beauty this is the one!

Rooms	Total	Upper 1	Lower 1
Bedrooms	3	2	1
Full Baths	2	1	1
Half Baths			

Basic Information

Address 19013 PARTRIDGE WOOD DR
City/Town GERMANTOWN
State MD
Zip Code 20874
County MONTGOMERY
Type Interior Row/Townhouse
MLS# MDMC619136
Ownership Fee Simple

Style Colonial
Adv Subdivision GUNNERS LAKE VILLAGE
DOM-Prop 164
Year Built 1987
Beds 3
Baths 2
Lot Size 1,008
Acres 0

Tax Living Area 1,320
Levels 3
Total Fin Sq Ft 1,960
Contract Date 2019-08-26
Close Date 2020-07-06
Close Price \$250,000
Seller Subsidy \$4,100

Exterior/Construction Features/Utilities

Exterior Vinyl Siding
Water Type Public
Sewer Public Sewer

Hot Water Electric
Heating Heat Pump(s)
Cooling Central A/C

Parking Assigned
Spaces 2
Porch/Patio Deck(s), Patio(s)

Tax/Legal Information

Tax ID # 160902636238
Tax Year 2020
Tax Assessment Value \$272,900
Total Taxes \$3,037

Legal Subdiv GUNNERS LAKE VILLAGE
County Tax \$2,790
Lot 620
Short Sale Yes

Foreclosure No
REO/Bank Owned No

Interior Features/Amenities

Appliances Dishwasher, Disposal, Dryer, Oven/Range - Electric, Refrigerator, Washer

Int. Style Combination Dining/Living, Dining Area, Floor Plan - Open, Kitchen - Eat-In, Kitchen - Table Space

Basement Other, Fully Finished, Outside Entrance

Rooms/Levels/Flooring

Dining Room Main Carpet
Living Room Main Carpet
Bedroom 2 Upper 1
Bathroom 2 Lower 1

Kitchen Main HardWood
Bathroom 1 Upper 1
Primary Bedroom Upper 1 Carpet
Bedroom 3 Lower 1 Carpet



CIMENT & SHIELDS TEAM

Barbara Ciment, Associate Broker



(C) 301-346-9126 (O) 301-424-0900
 barbara@ciment.com www.ciment.com



Recent Home Sale: 19013 PARTRIDGE WOOD DR - \$250,000

HOA/Condo/Coop Info

HOA Fee \$84

Amenities Lake, Tot Lots/Playground

Information Courtesy of Keller Williams Realty. Copyright 2021 Bright MLS. Information is believed to be accurate, but should not be relied upon without verification. Accuracy of square footage, lot size and other information is not guaranteed. This website courtesy of Barbara Ciment, Realtor, Long & Foster Real Estate, Inc.



**CIMENT
& SHIELDS** TEAM

Barbara Ciment, Associate Broker

LONG & FOSTER
REALTOR® REAL ESTATE

(C) 301-346-9126

(O) 301-424-0900

barbara@ciment.com

www.ciment.com





Stunning 3-level Townhouse



Quality detail throughout



Chefs Kitchen with granite countertops



Perfect breakfast bar opens to living/dining rooms



Ample cabinetry



Hardwood floors



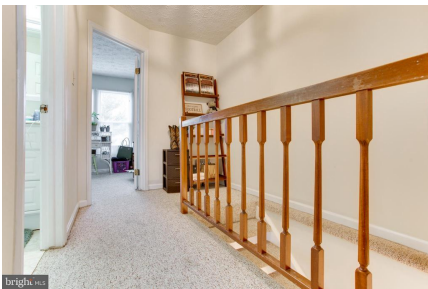
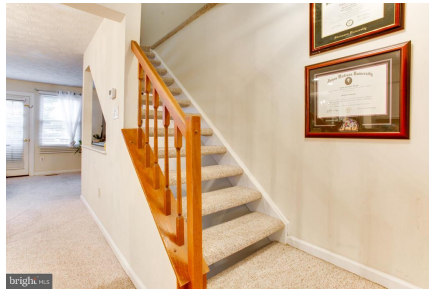
Combination dining and living room



Living room opens to private deck



Spacious deck overlooking natures privacy



Generously sized Master Bedroom



CIMENT & SHIELDS TEAM

Barbara Ciment, Associate Broker

LONG & FOSTER REAL ESTATE

(C) 301-346-9126

(O) 301-424-0900

barbara@ciment.com

www.ciment.com





Master with sitting area



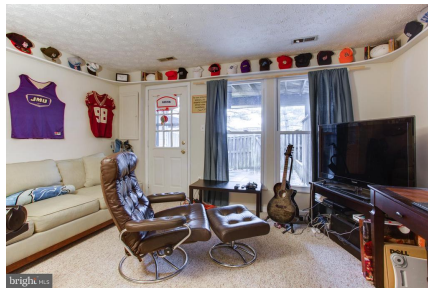
Master with sitting area



Lower level Bedroom/bonus room



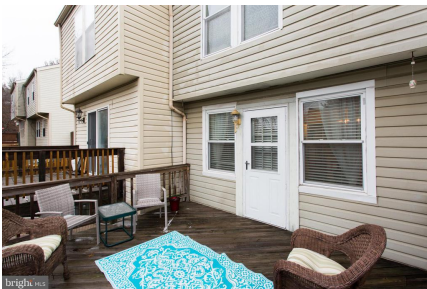
Walk out lower level with full bathroom



Flexible space for any lifestyle!



Full bathroom in lower level



Private deck, perfect for outdoor entertaining



Amenities include lake, pool and more!



Deck overlooks tranquil setting



Minutes to Germantown Train Station!



Lower Level opens to private patio below



Minutes to 270, local shops, restaurants & more!



CIMENT & SHIELDS TEAM

Barbara Ciment, Associate Broker

LONG & FOSTER REAL ESTATE

(C) 301-346-9126

(O) 301-424-0900

barbara@ciment.com

www.ciment.com





Walking distance to School!



Enjoy the community pool!



CIMENT & SHIELDS TEAM

Barbara Ciment, Associate Broker

LONG & FOSTER
REALTOR® REAL ESTATE

(C) 301-346-9126

(O) 301-424-0900

barbara@ciment.com

www.ciment.com

