

Recent Home Sale: 19008 JAMIESON DR - \$430,000



Remarks This 4BR 2.5BA colonial has been fully updated including a fully updated kitchen with granite counter tops, stainless steel appliances, new flooring, recessed lighting, updated bathrooms with heated flooring in the master bathroom and crown molding. New windows will be installed within the next 2 weeks with a full transferable warranty. Screened in rear patio, separate deck area and a fully fenced rear. Close to shopping, schools, restaurants and more.

Rooms	Total	Main	Upper 1
Bedrooms	4	0	4
Full Baths	2	0	2
Half Baths	1	1	0

Basic Information

Address 19008 JAMIESON DR
City/Town GERMANTOWN
State MD
Zip Code 20874
County MONTGOMERY
Type Detached
MLS# MDMC668596
Ownership Fee Simple

Style Colonial
Adv Subdivision GERMANTOWN ESTATES
DOM-Prop 5
Year Built 1980
Beds 4
Baths 2/1
Lot Size 6,699
Acres 0

Tax Living Area 2,262
Levels 3+
Total Fin Sq Ft 2,262
Contract Date 2019-07-12
Close Date 2019-08-07
Close Price \$430,000

Exterior/Construction Features/Utilities

Exterior Other
Roof Asphalt
Water Type Public

Sewer Public Sewer
Hot Water Electric
Heating Heat Pump(s)

Cooling Central A/C
Garage Spaces 1.00
Parking Asphalt Driveway, Surface

Tax/Legal Information

Tax ID # 160201810108
Tax Year 2019
Tax Assessment Value \$338,400
Total Taxes \$4,159

Legal Subdiv GERMANTOWN ESTATES
County Tax \$3,894
Lot 15
Short Sale No

Foreclosure No
REO/Bank Owned No

Interior Features/Amenities

Appliances Built-In Microwave, Dishwasher, Disposal, Dryer, Dryer - Electric, Dryer - Front Loading, Exhaust Fan, Extra Refrigerator/Freezer, Microwave, Oven/Range - Electric, Refrigerator, Stainless Steel Appliances, Washer

TV/Cable Electric Available, Cable TV Available, DSL Available, Phone Available, Sewer Available, Water Available
Basement Connecting Stairway, Partially Finished

Garage Garage Door Opener

HOA/Condo/Coop Info

HOA Fee \$44

Amenities Common Grounds, Jog/Walk Path

Information Courtesy of RE/MAX Town Center. Copyright 2021 Bright MLS. Information is believed to be accurate, but should not be relied upon without verification. Accuracy of square footage, lot size and other information is not guaranteed. This website courtesy of Barbara Ciment, Realtor, Long & Foster Real Estate, Inc.



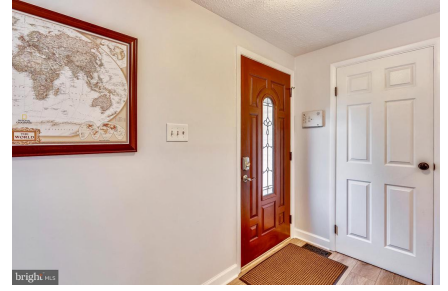
CIMENT & SHIELDS TEAM

Barbara Ciment, Associate Broker



(C) 301-346-9126 (O) 301-424-0900
 barbara@ciment.com www.ciment.com

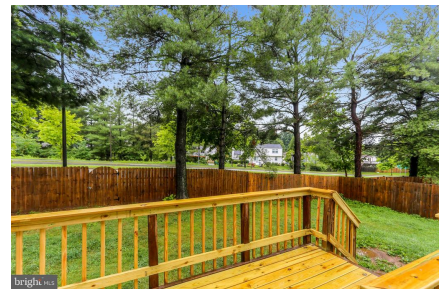
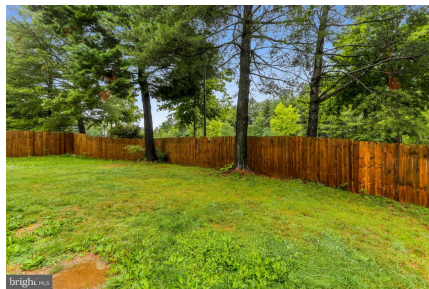




CIMENT & SHIELDS TEAM

Barbara Ciment, Associate Broker
LONG & FOSTER REAL ESTATE
(C) 301-346-9126 (O) 301-424-0900
barbara@ciment.com www.ciment.com





CIMENT & SHIELDS TEAM

Barbara Ciment, Associate Broker

LONG & FOSTER REAL ESTATE

(C) 301-346-9126

(O) 301-424-0900

barbara@ciment.com

www.ciment.com





CIMENT & SHIELDS  **TEAM**

Barbara Ciment, Associate Broker

 **LONG & FOSTER**
REALTOR® REAL ESTATE 

(C) 301-346-9126 (O) 301-424-0900
barbara@ciment.com www.ciment.com

