

## Recent Home Sale: 18303 BAILIWICK PL - \$404,500



**Remarks** This home has been meticulously maintained by original owners, it shows! the open floor plan is great for large scale entertaining as well as everyday living, updates including hardwood floors on entire main level, new carpeting on upper and lower level, new flooring in bathrooms, freshly painted, it is ready for move in. home features 3 level pump out, completely finished lower level added addition bedroom and full bath, deck off kitchen overlooks open green area, open this Sunday May 5th 1-3 pm,

Rooms	Total	Main	Upper 1	Lower 1
Bedrooms	4	0	3	1
Full Baths	3	0	2	1
Half Baths	1	1		

### Basic Information

**Address** 18303 BAILIWICK PL  
**City/Town** GERMANTOWN  
**State** MD  
**Zip Code** 20874  
**County** MONTGOMERY  
**Type** Interior Row/Townhouse  
**MLS#** MDMC656426  
**Ownership** Fee Simple

**Style** Colonial  
**Adv Subdivision** KINGSVIEW VILLAGE  
**DOM-Prop** 21  
**Year Built** 2000  
**Beds** 4  
**Baths** 3/1  
**Lot Size** 1,500  
**Acres** 0

**Tax Living Area** 2,383  
**Levels** 3+  
**Total Fin Sq Ft** 2,383  
**Contract Date** 2019-05-21  
**Close Date** 2019-06-18  
**Close Price** \$404,500  
**Seller Subsidy** \$11,815

### Exterior/Construction Features/Utilities

**Exterior** Aluminum Siding  
**Water Type** Public  
**Sewer** Public Sewer

**Heating** Forced Air  
**Cooling** Central A/C  
**Parking** Assigned

**# Spaces** 1

### Tax/Legal Information

**Tax ID #** 160603236734  
**Tax Year** 2018  
**Tax Assessment Value** \$379,300  
**Total Taxes** \$4,413

**Legal Subdiv** KINGSVIEW VILLAGE  
**County Tax** \$4,173  
**Lot** 50  
**Short Sale** No

**Foreclosure** No  
**REO/Bank Owned** No

### Interior Features/Amenities

**Appliances** Dishwasher, Disposal, Dryer, Exhaust Fan, Humidifier, Range Hood, Refrigerator, Washer, Stove

**Int. Style** Wood Floors  
**Basement** Full

### HOA/Condo/Coop Info

**HOA Fee** \$103

Information Courtesy of Long & Foster Real Estate, Inc.. Copyright 2021 Bright MLS. Information is believed to be accurate, but should not be relied upon without verification. Accuracy of square footage, lot size and other information is not guaranteed. This website courtesy of Barbara Ciment, Realtor, Long & Foster Real Estate, Inc.



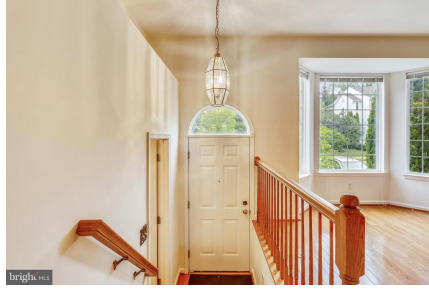
**CIMENT & SHIELDS TEAM**

**Barbara Ciment, Associate Broker**



(C) 301-346-9126 (O) 301-424-0900  
 barbara@ciment.com www.ciment.com

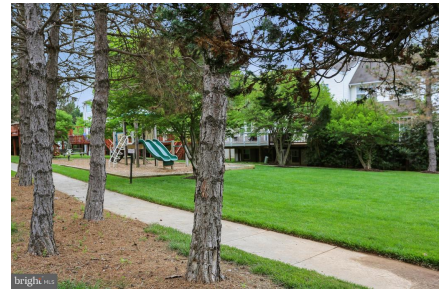




**CIMENT & SHIELDS TEAM**

**Barbara Ciment, Associate Broker**  
**LONG & FOSTER REAL ESTATE**  
EQUAL HOUSING OPPORTUNITY  
(C) 301-346-9126 (O) 301-424-0900  
barbara@ciment.com www.ciment.com





**CIMENT & SHIELDS TEAM**

**Barbara Ciment, Associate Broker**

**LONG & FOSTER REAL ESTATE**

(C) 301-346-9126

(O) 301-424-0900

[barbara@ciment.com](mailto:barbara@ciment.com)

[www.ciment.com](http://www.ciment.com)





brighthouse | Copyright © TruPlace, Inc.



brighthouse | Copyright © TruPlace, Inc.



brighthouse | Copyright © TruPlace, Inc.



**CIMENT & SHIELDS TEAM**

**Barbara Ciment, Associate Broker**



(C) 301-346-9126 (O) 301-424-0900  
[barbara@ciment.com](mailto:barbara@ciment.com) [www.ciment.com](http://www.ciment.com)

