

Recent Home Sale: 13402 STONEBRIDGE TER - \$660,000



Remarks New Price! Spacious 5 bedroom 4.5 bath brick front custom colonial on .58 acres. 4800+ total finished SQFT Huge yard backs to trees and stream. Sought after Montgomery County Schools. Master suite with sitting room and custom bath. Possible main level bedroom. Office on main level. Vaulted foyer, custom wainscotting, crown molding. No HOA

Rooms	Total	Main	Upper 1	Lower 1
Bedrooms	5	0	4	1
Full Baths	4	0	3	1
Half Baths	1	1		0

Basic Information

Address 13402 STONEBRIDGE TER
City/Town GERMANTOWN
State MD
Zip Code 20874
County MONTGOMERY
Type Detached
MLS# MDMC664166
Ownership Fee Simple

Style Colonial
Adv Subdivision CLOPPERS MILL WEST
DOM-Prop 39
Year Built 2003
Beds 5
Baths 4/1
Lot Size 25,057
Acres 1

Tax Living Area 3,688
Levels 3+
Total Fin Sq Ft 4,888
Contract Date 2019-07-20
Close Date 2019-08-23
Close Price \$660,000
Seller Subsidy \$19,800

Exterior/Construction Features/Utilities

Lot Desc Backs to Trees, Cul-de-sac, No Thru Street, Not In Development, Partly Wooded, Rear Yard, Stream/Creek, Trees/Wooded

Exterior Brick Front
Roof Architectural Shingle
Water Type Public
Sewer Public Sewer

Hot Water Natural Gas
Heating Central, Heat Pump(s)
Cooling Central A/C, Heat Pump(s)
Garage Spaces 2.00

Tax/Legal Information

Tax ID # 160603364227
Tax Year 2019
Tax Assessment Value \$617,200
Total Taxes \$7,297

Legal Subdiv CLOPPERS MILL WEST
County Tax \$6,927
Lot 193
Short Sale No

Foreclosure No
REO/Bank Owned No

Interior Features/Amenities

Appliances Built-In Microwave, Dishwasher, Disposal, Dryer, Energy Efficient Appliances, Exhaust Fan, Extra Refrigerator/Freezer, Oven - Self Cleaning, Oven/Range - Gas, Range Hood, Refrigerator, Stainless Steel Appliances, Stove, Washer, Water Heater

Int. Style Bar, Breakfast Area, Carpet, Ceiling Fan(s), Chair Railings, Combination Kitchen/Dining, Crown Moldings, Curved Staircase, Dining Area, Family Room Off Kitchen, Floor Plan - Open, Formal/Separate Dining Room, Kitchen - Eat-In, Kitchen - Country, Kitchen - Gourmet, Kitchen - Island, Kitchen - Table Space, Primary Bath(s), Recessed Lighting, Stall Shower, Upgraded Countertops, Wainscotting, Walk-in Closet(s), Window Treatments, Wood Floors

Doors Sliding Glass, Six Panel
Windows Atrium
Fireplaces 1
Fireplace Gas/Propane
Basement Other, Connecting Stairway, Daylight, Full, Daylight, Partial, Full, Fully Finished, Heated, Improved, Interior Access, Outside Entrance, Poured Concrete, Rear Entrance, Space For Rooms, Walkout Level, Windows
Garage Garage Door Opener, Garage - Front Entry



CIMENT & SHIELDS TEAM

Barbara Ciment, Associate Broker



(C) 301-346-9126 (O) 301-424-0900
 barbara@ciment.com www.ciment.com



Recent Home Sale: 13402 STONEBRIDGE TER - \$660,000

Rooms/Levels/Flooring

Additional Bedroom	Main		Dining Room	Main	
Foyer	Main		Kitchen	Main	
Laundry	Main		Living Room	Main	
Living Room	Main	HardWood	Office	Main	
Sitting Room	Main		2nd Stry Fam Ovrk	Upper 1	
Bathroom 2	Upper 1		Bathroom 3	Upper 1	
Bedroom 2	Upper 1		Bedroom 3	Upper 1	
Bedroom 4	Upper 1		Primary Bedroom	Upper 1	Carpet
Den	Lower 1		In-Law/auPair/Suite	Lower 1	

Information Courtesy of RE/MAX Plus. Copyright 2021 Bright MLS. Information is believed to be accurate, but should not be relied upon without verification. Accuracy of square footage, lot size and other information is not guaranteed. This website courtesy of Barbara Ciment, Realtor, Long & Foster Real Estate, Inc.



**CIMENT
& SHIELDS** TEAM

Barbara Ciment, Associate Broker



(C) 301-346-9126

(O) 301-424-0900

barbara@ciment.com

www.ciment.com





Beautiful Brick Front Colonial on .58 acres!



Foyer



Central Staircase



Open Floor Plan with Formal Livingroom



Formal Livingroom



Formal Livingroom leads to Dining Room



Formal Dining Room



Formal Dining Room



Open Floorplan



Palatial Windows dominate gorgeous livingroom



Kitchen with stainless appliances and gas stove



Kitchen with stainless appliances and gas stove



CIMENT & SHIELDS TEAM

Barbara Ciment, Associate Broker

LONG & FOSTER REAL ESTATE

(C) 301-346-9126

(O) 301-424-0900

barbara@ciment.com

www.ciment.com

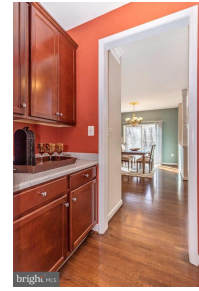




Kitchen open to Living Room



Eat in Kitchen



Dedicated Bar area off Dining room and Kitchen



First floor half bath



Office can double as First Floor Bedroom!



Elegant Master Bedroom



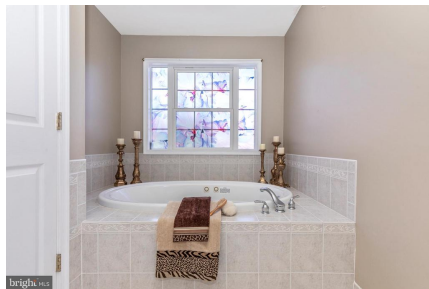
Spacious sitting room off Master Bedroom



Master Suite



Master Bath with separate WC



Master Bath with Sunken Tub



Master Bath with double vanity



Bedroom Two



Bedroom Three



Bedroom Four



CIMENT & SHIELDS TEAM

Barbara Ciment, Associate Broker

LONG & FOSTER REAL ESTATE

(C) 301-346-9126

(O) 301-424-0900

barbara@ciment.com

www.ciment.com





Full Bathroom on second level



Finished Basement



Gaming room on Lower Level



Bedroom Five on Lower Level



Full Bath on lower Level



Backyard backs to trees



Treed lot backs to stream



CIMENT & SHIELDS TEAM

Barbara Ciment, Associate Broker

LONG & FOSTER
REALTOR® REAL ESTATE

(C) 301-346-9126

(O) 301-424-0900

barbara@ciment.com

www.ciment.com

