

Recent Home Sale: 13015 BRIDGER DR #1507 - \$279,000



Remarks Beautiful three level condo located in the very desired Cloverleaf. Less than a mile to I-270, public transportation and endless shopping. This 2 bedroom, 2 full and two half bath condo boasts over 1600 square feet of living area, three fully finished levels, attached garage and two master bedrooms. One of the lowest condo fees in Montgomery County at only \$146.00/month. Recent upgrades include furnace, appliances, flooring and tiled bathrooms. These units do not last long. Priced right and ready to sell. A must see home!

Rooms	Total	Main	Upper 1	Lower 1
Bedrooms	2	0	2	0
Full Baths	2	0	2	0
Half Baths	2	1	0	1

Basic Information

Address 13015 BRIDGER DR #1507
City/Town GERMANTOWN
State MD
Zip Code 20874
County MONTGOMERY
Type Unit/Flat/Apartment
MLS# MDMC664134

Ownership Condominium
Style Traditional
Adv Subdivision CLOVERLEAF
DOM-Prop 6
Year Built 1995
Beds 2
Baths 2/2

Tax Living Area 1,610
Levels 3+
Total Fin Sq Ft 1,610
Contract Date 2019-06-16
Close Date 2019-07-31
Close Price \$279,000
Seller Subsidy \$10,000

Exterior/Construction Features/Utilities

Exterior Vinyl Siding
Water Type Public
Sewer Public Sewer

Hot Water Natural Gas
Heating 90% Forced Air
Cooling Central A/C

Garage Spaces 1.00
Parking Concrete Driveway
Porch/Patio Balcony, Patio(s)

Tax/Legal Information

Tax ID # 160203118145
Tax Year 2019
Tax Assessment Value \$226,667

Total Taxes \$2,808
Legal Subdiv CLOVERLEAF CENTER CODM
County Tax \$2,536

Short Sale No
Foreclosure No
REO/Bank Owned No

Interior Features/Amenities

Int. Style Ceiling Fan(s), Carpet, Floor Plan - Open
Fireplaces 1

Fireplace Gas/Propane, Fireplace - Glass Doors
Basement Daylight, Partial, Fully Finished, Outside Entrance

Garage Garage - Front Entry

HOA/Condo/Coop Info

Condo/Coop Fee \$146

Amenities Common Grounds

Project Name CLOVERLEAF CENTE

Information Courtesy of Long & Foster Real Estate, Inc.. Copyright 2021 Bright MLS. Information is believed to be accurate, but should not be relied upon without verification. Accuracy of square footage, lot size and other information is not guaranteed. This website courtesy of Barbara Ciment, Realtor, Long & Foster Real Estate, Inc.



CIMENT & SHIELDS TEAM

Barbara Ciment, Associate Broker



(C) 301-346-9126 (O) 301-424-0900
 barbara@ciment.com www.ciment.com





Desired community



Private garage and driveway



Three finished levels



Breezeway



Common Grounds



Master Bedroom



Master Bedroom



Master Bedroom entrance into private bath



Master Bath - Dual Vanities



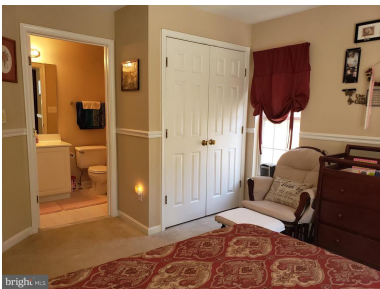
Master shower



2nd master bedroom



Tons of natural light



2nd bedroom entrance into private full bath



2nd Bedroom private full bath



CIMENT & SHIELDS TEAM

Barbara Ciment, Associate Broker

LONG & FOSTER REAL ESTATE

(C) 301-346-9126

(O) 301-424-0900

barbara@ciment.com

www.ciment.com





Wood floors and recessed lighting



Updated main level half bath



Kitchen with plenty of counter space



Newer gas appliances



Large kitchen with pass through to dining area



Lower level family room with outside entrance



Lower level family room



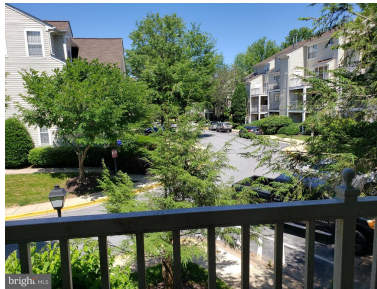
Lower level half bath



Lower level patio



Lower level patio with walkway to parking



Large upper level balcony



In unit washer/dryer



Newer gas furnace



CIMENT & SHIELDS TEAM

Barbara Ciment, Associate Broker

LONG & FOSTER REAL ESTATE

(C) 301-346-9126

(O) 301-424-0900

barbara@ciment.com

www.ciment.com

