

Recent Home Sale: 11506 BRUNDIDGE TER - \$280,000



Remarks Very excited to list this awesome townhome with a great location - close to 355, 270, grocery/shopping, hospital and more! Equipped with hardwood floors, granite counters, ceramic tiles, a deck, and a finished walkout basement with a potential 2nd kitchen. We are not expecting this to stay on the market for long!

| Rooms | Total | Main | Upper 1 | Lower 1 |
|------------|-------|------|---------|---------|
| Bedrooms | 3 | 0 | 3 | |
| Full Baths | 2 | 0 | 1 | 1 |
| Half Baths | 1 | 1 | | |

Basic Information

Address 11506 BRUNDIDGE TER
City/Town GERMANTOWN
State MD
Zip Code 20876
County MONTGOMERY
Type Interior Row/Townhouse
MLS# MDMC680302
Ownership Fee Simple

Style Colonial
Adv Subdivision BRANDERMILL
DOM-Prop 14
Year Built 1987
Beds 3
Baths 2/1
Lot Size 1,400
Acres 0

Tax Living Area 1,240
Levels 3+
Total Fin Sq Ft 1,240
Contract Date 2019-10-07
Close Date 2019-10-24
Close Price \$280,000

Exterior/Construction Features/Utilities

Exterior Vinyl Siding, Brick Front
Water Type Public

Sewer Public Sewer
Heating Heat Pump(s)

Cooling Central A/C, Heat Pump(s)

Tax/Legal Information

Tax ID # 160902051421
Tax Year 2019
Tax Assessment Value \$248,467
Total Taxes \$3,087

Legal Subdiv BRANDERMILL
County Tax \$2,839
Lot 67
Short Sale No

Foreclosure No
REO/Bank Owned No

Interior Features/Amenities

Basement Fully Finished, Outside Entrance, Interior Access, Walkout Level

HOA/Condo/Coop Info

HOA Fee \$96

Information Courtesy of Weichert, REALTORS. Copyright 2021 Bright MLS. Information is believed to be accurate, but should not be relied upon without verification. Accuracy of square footage, lot size and other information is not guaranteed. This website courtesy of Barbara Ciment, Realtor, Long & Foster Real Estate, Inc.



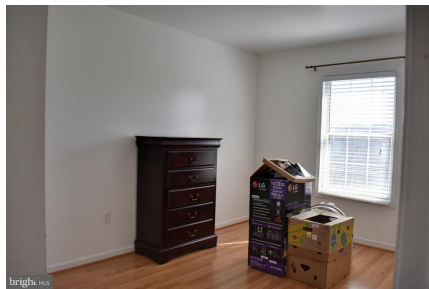
CIMENT & SHIELDS TEAM

Barbara Ciment, Associate Broker

LONG & FOSTER REAL ESTATE

(C) 301-346-9126 (O) 301-424-0900
barbara@ciment.com www.ciment.com





CIMENT & SHIELDS TEAM

Barbara Ciment, Associate Broker
LONG & FOSTER REAL ESTATE
(C) 301-346-9126 (O) 301-424-0900
barbara@ciment.com www.ciment.com





Potential 2nd kitchen in basement



Full bathroom in basement



Walkout basement



CIMENT & SHIELDS TEAM

Barbara Ciment, Associate Broker

LONG & FOSTER
REALTOR® REAL ESTATE

(C) 301-346-9126

(O) 301-424-0900

barbara@ciment.com

www.ciment.com

