

Recent Home Sale: 11419 APPLEGRATH WAY - \$289,000



Remarks Excellent end-unit townhouse in a lovely neighborhood. Features include new carpeting and paint throughout and other recent improvements such as granite kitchen counter-tops and new kitchen and powder room floor. Endless uses for the ample space in the finished basement such as a rec room for gaming and/or exercise equipment. Enjoy the expansive park-like setting as viewed from your rear deck that overlooks the maintained lawn and backs on to a wooded area. This will not last!

| Rooms | Total | Main | Upper 1 | Lower 1 |
|------------|-------|------|---------|---------|
| Bedrooms | 3 | | 3 | |
| Full Baths | 2 | | 1 | 1 |
| Half Baths | 1 | 1 | | |

Basic Information

Address 11419 APPLEGRATH WAY
City/Town GERMANTOWN
State MD
Zip Code 20876
County MONTGOMERY
Type End of Row/Townhouse
MLS# MDMC666290
Ownership Fee Simple

Style Colonial
Adv Subdivision BRANDERMILL
DOM-Prop 16
Year Built 1986
Beds 3
Baths 2/1
Lot Size 2,100
Acres 0

Tax Living Area 1,120
Levels 3+
Total Fin Sq Ft 1,660
Contract Date 2019-07-13
Close Date 2019-08-02
Close Price \$289,000
Seller Subsidy \$8,670

Exterior/Construction Features/Utilities

Lot Desc Backs - Open Common Area, Backs - Parkland, Backs to Trees, Front Yard, Landscaping, Level, No Thru Street, Open, Rear Yard, SideYard(s)
Exterior Aluminum Siding, Frame, Stick Built, Brick, Brick Front
Roof Asphalt, Pitched, Shingle

Water Type Public
Sewer Public Sewer
Hot Water Electric
Heating Central
Cooling Central A/C
Parking Assigned, Free, Lighted Parking, Parking Space Conveys, Paved Parking, Unassigned

Spaces 1
Porch/Patio Deck(s)
Other Features Exterior Lighting, Sidewalks, Street Lights

Tax/Legal Information

Tax ID # 160902057256
Tax Year 2019
Tax Assessment Value \$234,933
Total Taxes \$2,904

Legal Subdiv BRANDERMILL
County Tax \$2,657
Lot 154
Short Sale No

Foreclosure No
REO/Bank Owned No

Interior Features/Amenities

Appliances Built-In Microwave, Dishwasher, Disposal, Dryer - Electric, Exhaust Fan, Oven - Self Cleaning, Oven - Single, Oven/Range - Electric, Range Hood, Refrigerator, Stove, Washer, Water Heater
Int. Style Attic, Carpet, Combination
 Dining/Living, Floor Plan - Traditional, Kitchen - Eat-In, Recessed Lighting, Stall Shower, Tub Shower, Upgraded Countertops, Wood Floors, Dining Area

Doors Storm
Windows Double Hung, Double Pane, Energy Efficient, Insulated, Screens, Sliding
Wall/Ceiling Dry Wall
Security Security System, Smoke Detector
TV/Cable Cable TV Available, Electric Available, Phone Available, Under Ground, Water Available, Sewer Available, Fiber Optics Available

Basement Other, Connecting Stairway, Daylight, Partial, Full, Fully Finished, Heated, Improved, Interior Access, Sump Pump, Windows



CIMENT & SHIELDS TEAM

Barbara Ciment, Associate Broker



(C) 301-346-9126 (O) 301-424-0900
 barbara@ciment.com www.ciment.com



Recent Home Sale: 11419 APPLEGRATH WAY - \$289,000

Rooms/Levels/Flooring

| | | | | | |
|------------------------|---------|------------|-------------------|---------|------------|
| Half Bath | Main | Tile/Brick | Kitchen | Main | Vinyl |
| Living Room | Main | HardWood | Bathroom 2 | Upper 1 | Tile/Brick |
| Bedroom 2 | Upper 1 | Carpet | Bedroom 3 | Upper 1 | Carpet |
| Primary Bedroom | Upper 1 | Carpet | Bathroom 3 | Lower 1 | Tile/Brick |
| Den | Lower 1 | Vinyl | Laundry | Lower 1 | Concrete |

HOA/Condo/Coop Info

HOA Fee \$94

Amenities Common Grounds, Jog/Walk Path,
Pool - Outdoor, Reserved/Assigned Parking,
Swimming Pool, Tennis Courts, Tot
Lots/Playground

Information Courtesy of Spicer Real Estate. Copyright 2021 Bright MLS. Information is believed to be accurate, but should not be relied upon without verification. Accuracy of square footage, lot size and other information is not guaranteed. This website courtesy of Barbara Ciment, Realtor, Long & Foster Real Estate, Inc.



**CIMENT
& SHIELDS** TEAM

Barbara Ciment, Associate Broker



(C) 301-346-9126

(O) 301-424-0900

barbara@ciment.com

www.ciment.com





Brick Front Preferred End Unit



Rear Of Townhome



Large Deck Ready For Summer



Awesome View Overlooking Green Open Space



Entry Foyer



Well Appointed Kitchen



Combination Living and Dining Room



Half Bath On Main Level



Sunny Master Bedroom



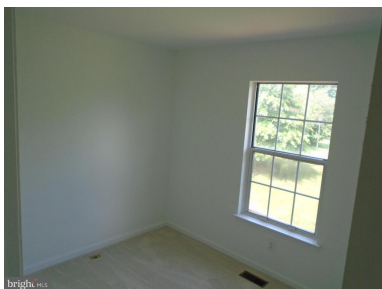
Master Bedroom View Of Vaulted Ceiling



Full Bath Upstairs Off Of Hall



Second Bedroom



Third Bedroom



Finished Basement With Track & Recessed Lighting



Additional View Of Finished Basement



CIMENT & SHIELDS TEAM

Barbara Ciment, Associate Broker

LONG & FOSTER REAL ESTATE

(C) 301-346-9126

(O) 301-424-0900

barbara@ciment.com

www.ciment.com





View Of Full Bath In Finished Basement



Tile Stand-Up Shower In Finished Basement



Laundry Room



CIMENT & SHIELDS TEAM

Barbara Ciment, Associate Broker

LONG & FOSTER
REALTOR® REAL ESTATE

(C) 301-346-9126

(O) 301-424-0900

barbara@ciment.com

www.ciment.com

