

: -

Remarks



Rooms	Total
Bedrooms	
Full Baths	
Half Baths	

Basic Information

Lot Size 0

Acres 0

Tax Living Area 0

Tax/Legal Information

Tax ID #

Foreclosure No

Short Sale No

REO/Bank Owned No

Information Courtesy of . Copyright 2021 Bright MLS. Information is believed to be accurate, but should not be relied upon without verification. Accuracy of square footage, lot size and other information is not guaranteed. This website courtesy of Barbara Ciment, Realtor, Long & Foster Real Estate, Inc.



Barbara Ciment, Associate Broker



(C) 301-346-9126

(O) 301-424-0900

barbara@ciment.com

www.ciment.com

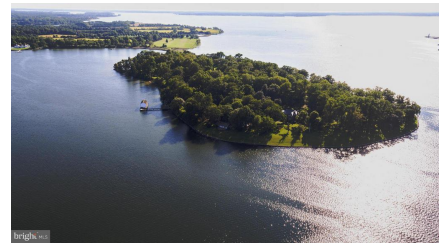




Aerial



Front Aerial



Aerial



Pond



Barns and Boat House



Boathouse and Covered Dock



Boat House and Deep Water Dock



Causeway



Causeway



2nd Dock on Shaw Bay



Sandy Beach with Bulkhead



Driveway Views



Sandy Beaches



Exterior (Front)



Exterior (Front)



CIMENT & SHIELDS TEAM

Barbara Ciment, Associate Broker

LONG & FOSTER REAL ESTATE

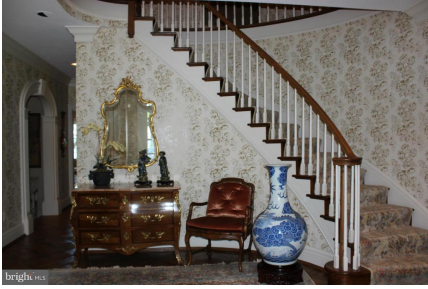
(C) 301-346-9126

(O) 301-424-0900

barbara@ciment.com

www.ciment.com

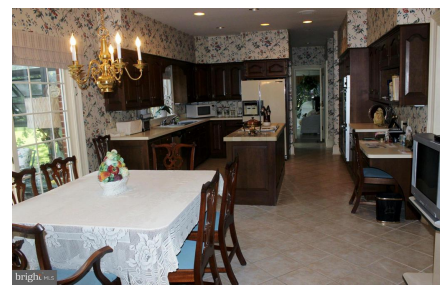




Foyer



Dining Room



Kitchen



Sunroom



Solarium



Living Room



Family Room



Den



Bedroom (Master)



Bedroom (Master)



1 of 2 Master Baths



Pool House - Water Side



Pool House Rec Room/Kitchen



Waterside Pool with Fountains



View from Pool House Patio



CIMENT & SHIELDS TEAM

Barbara Ciment, Associate Broker

LONG & FOSTER REAL ESTATE

(C) 301-346-9126

(O) 301-424-0900

barbara@ciment.com

www.ciment.com

