

Recent Home Sale: 24905 KINGS VALLEY RD - \$617,000



Remarks New Price! Move right into this 6 Bed 4 Full Bath Colonial offering scenic views and a great floorplan. The main level features a bedroom with full bath and a family room with a stone gas fireplace that exits onto a large private deck overlooking a pond. The grand kitchen is an entertainer's dream, with granite countertops, SS Appliances, wine fridge, and large island. Upstairs the master suite welcomes you with an oversized bedroom, updated luxury bathroom and separate tub/shower. Upper level has 3 additional bedrooms and a newly remodeled full bathroom! Walkout lower level features a bedroom and full bath, large Rec Room, and plenty of storage space. Great set up for a large family or in-law. Minutes to 270, Germantown and Clarksburg Shopping, Restaurants and more. A must see! More recent updates; basement walks out to brand new patio and driveway has just been sealed!

Rooms	Total	Main	Upper 1	Lower 1
Bedrooms	6	1	4	1
Full Baths	4	1	2	1
Half Baths				

Basic Information

Address 24905 KINGS VALLEY RD
City/Town DAMASCUS
State MD
Zip Code 20872
County MONTGOMERY
Type Detached
MLS# MDMC620400
Ownership Fee Simple

Style Colonial, Traditional
Adv Subdivision KINGS VALLEY MANOR
DOM-Prop 157
Year Built 1989
Beds 6
Baths 4
Lot Size 19,204
Acres 0

Tax Living Area 4,413
Levels 3+
Total Fin Sq Ft 4,413
Contract Date 2019-08-10
Close Date 2019-09-12
Close Price \$617,000
Seller Subsidy \$20,000

Exterior/Construction Features/Utilities

Exterior Other
Roof Architectural Shingle
Water Type Public

Sewer Public Sewer
Hot Water Natural Gas
Heating Central

Cooling Central A/C
Garage Spaces 2.00

Tax/Legal Information

Tax ID # 161201653261
Tax Year 2019
Tax Assessment Value \$549,300
Total Taxes \$6,665

Legal Subdiv KINGS VALLEY MANOR
County Tax \$6,243
Lot 1
Short Sale No

Foreclosure No
REO/Bank Owned No

Interior Features/Amenities

Fireplaces 1
Fireplace Gas/Propane, Mantel(s)

Basement Full, Walkout Level

Garage Garage - Front Entry, Garage Door Opener

HOA/Condo/Coop Info

HOA Fee \$50

Information Courtesy of RE/MAX Realty Group. Copyright 2021 Bright MLS. Information is believed to be accurate, but should not be relied upon without verification. Accuracy of square footage, lot size and other information is not guaranteed. This website courtesy of Barbara Ciment, Realtor, Long & Foster Real Estate, Inc.



CIMENT & SHIELDS TEAM

Barbara Ciment, Associate Broker

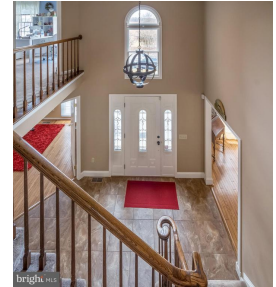


(C) 301-346-9126 (O) 301-424-0900
 barbara@ciment.com www.ciment.com





Exterior Front



CIMENT & SHIELDS TEAM

Barbara Ciment, Associate Broker

LONG & FOSTER REAL ESTATE

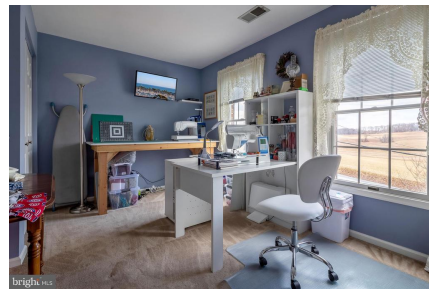
(C) 301-346-9126

(O) 301-424-0900

barbara@ciment.com

www.ciment.com

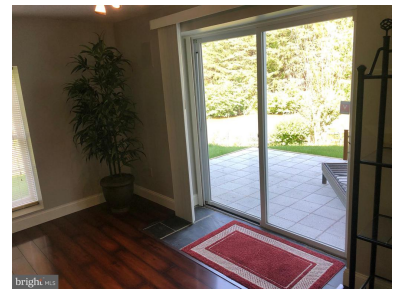
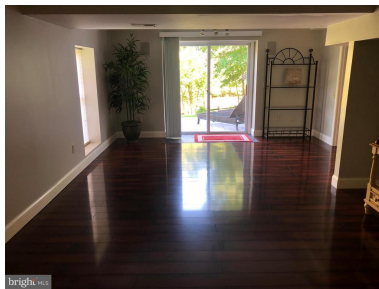
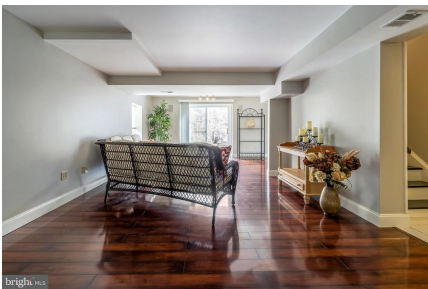
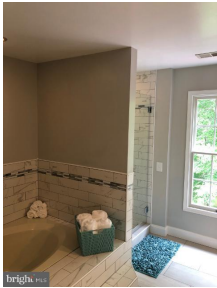
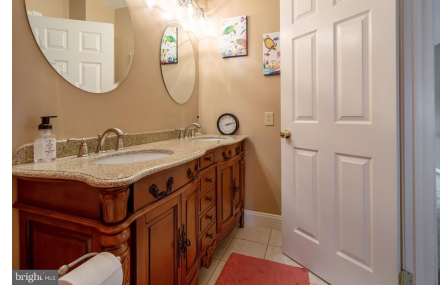




CIMENT & SHIELDS TEAM

Barbara Ciment, Associate Broker
LONG & FOSTER REAL ESTATE
REALTOR® EQUAL HOUSING OPPORTUNITY
(C) 301-346-9126 (O) 301-424-0900
barbara@ciment.com www.ciment.com

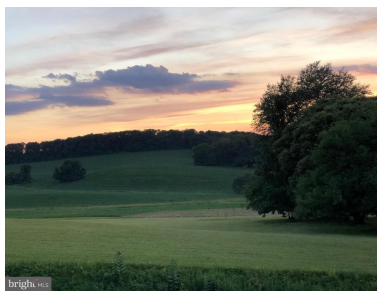
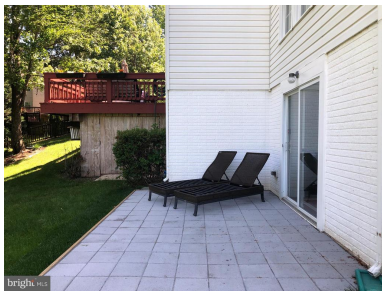
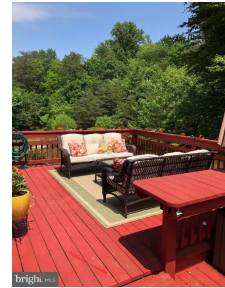




CIMENT & SHIELDS TEAM

Barbara Ciment, Associate Broker
LONG & FOSTER REAL ESTATE
(C) 301-346-9126 (O) 301-424-0900
barbara@ciment.com www.ciment.com





CIMENT & SHIELDS TEAM

Barbara Ciment, Associate Broker

LONG & FOSTER REAL ESTATE

(C) 301-346-9126

(O) 301-424-0900

barbara@ciment.com

www.ciment.com





CIMENT & SHIELDS  **TEAM**

Barbara Ciment, Associate Broker

 **LONG & FOSTER**
REALTOR® REAL ESTATE EQUAL HOUSING OPPORTUNITY

(C) 301-346-9126 (O) 301-424-0900
barbara@ciment.com www.ciment.com

