



Remarks

Rooms	Total
Bedrooms	
Full Baths	
Half Baths	

bright.mls

Basic Information

Lot Size 0

Acres 0

Tax Living Area 0

Tax/Legal Information

Tax ID #

Foreclosure No

Short Sale No

REO/Bank Owned No

Information Courtesy of . Copyright 2021 Bright MLS. Information is believed to be accurate, but should not be relied upon without verification. Accuracy of square footage, lot size and other information is not guaranteed. This website courtesy of Barbara Ciment, Realtor, Long & Foster Real Estate, Inc.



Barbara Ciment, Associate Broker



(C) 301-346-9126

(O) 301-424-0900

barbara@ciment.com

www.ciment.com





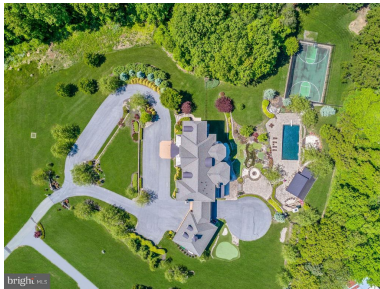
brightrMLS
Aerial View of Tomahawk Equestrian Estate



brightrMLS
Aerial Showing Boundary Lines & Park Access



brightrMLS
Aerial View of Both Properties



brightrMLS
Aerial View of Main Home



brightrMLS
Aerial View of Main Home



brightrMLS
KOI Pond & Firepit



brightrMLS
Gated Entrance to Main Home



brightrMLS
Front View of Main Home



brightrMLS
Front View of Main Home



brightrMLS
Front View of Main Home



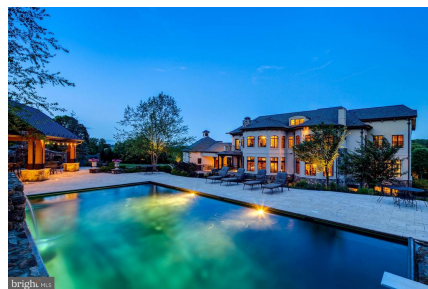
brightrMLS
Front View of Main Home at Dusk



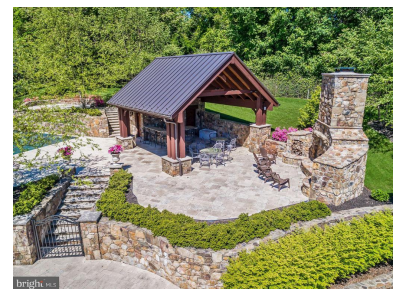
brightrMLS
Rear View of Main Home



brightrMLS
Rear View of Main House & Pool



brightrMLS
Pool at Dusk



brightrMLS
Poolside Pavillion & Stone Fireplace



CIMENT & SHIELDS TEAM

Barbara Ciment, Associate Broker

LONG & FOSTER REAL ESTATE

(C) 301-346-9126

(O) 301-424-0900

barbara@ciment.com

www.ciment.com





Pool & Pavillion



Pavillion & Stone Fireplace



KOI Pond & Waterfalls



Firepit



Putting Green



Sport Court



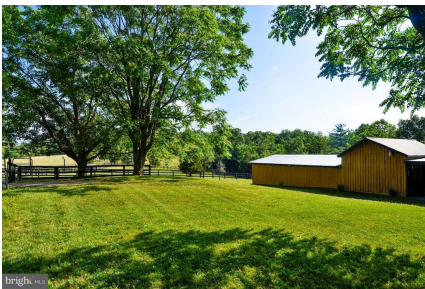
Front View of Guest House



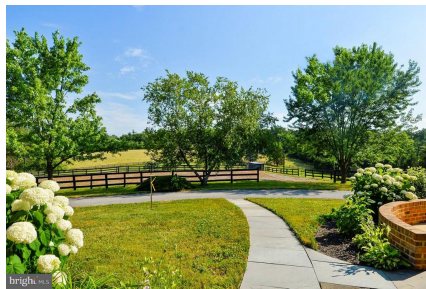
Side View of Guest House



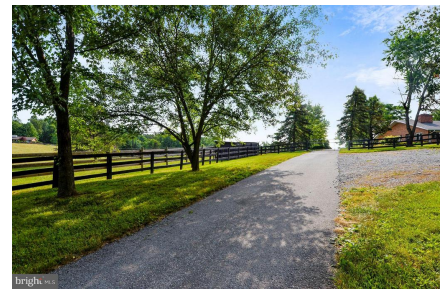
Barn & Stalls



Barn & Lawn



View of Fenced Riding Area



Gated Main Entrance to Guest House



View of Pasture



View of Pasture

Click on Home Tour Links for Additional & Interior Home Photos

Reminder to See Home Tours for Additional Photos



CIMENT & SHIELDS TEAM

Barbara Ciment, Associate Broker

LONG & FOSTER REAL ESTATE

(C) 301-346-9126

(O) 301-424-0900

barbara@ciment.com

www.ciment.com

