

: -



**Remarks**

Rooms	Total
Bedrooms	
Full Baths	
Half Baths	

**Basic Information**

Lot Size 0

Acres 0

Tax Living Area 0

**Tax/Legal Information**

Tax ID #

Foreclosure No

Short Sale No

REO/Bank Owned No

Information Courtesy of . Copyright 2021 Bright MLS. Information is believed to be accurate, but should not be relied upon without verification. Accuracy of square footage, lot size and other information is not guaranteed. This website courtesy of Barbara Ciment, Realtor, Long & Foster Real Estate, Inc.



**Barbara Ciment, Associate Broker**



(C) 301-346-9126

(O) 301-424-0900

[barbara@ciment.com](mailto:barbara@ciment.com)

[www.ciment.com](http://www.ciment.com)





Photo is for illustrative purposes only

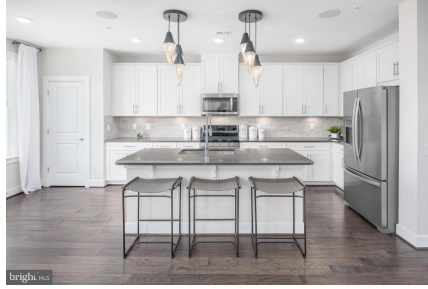


Photo is for illustrative purposes only



Photo is for illustrative purposes only



Photo is for illustrative purposes only



Photo is for illustrative purposes only



Photo is for illustrative purposes only



Photo is for illustrative purposes only

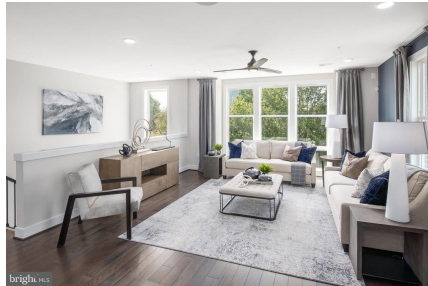


Photo is for illustrative purposes only



Photo is for illustrative purposes only



Photo is for illustrative purposes only



Photo is for illustrative purposes only



Photo is for illustrative purposes only



Photo is for illustrative purposes only



Photo is for illustrative purposes only



Photo is for illustrative purposes only



**CIMENT & SHIELDS TEAM**

**Barbara Ciment, Associate Broker**

**LONG & FOSTER REAL ESTATE**

(C) 301-346-9126

(O) 301-424-0900

[barbara@ciment.com](mailto:barbara@ciment.com)

[www.ciment.com](http://www.ciment.com)





Photo is for illustrative purposes only



Photo is for illustrative purposes only

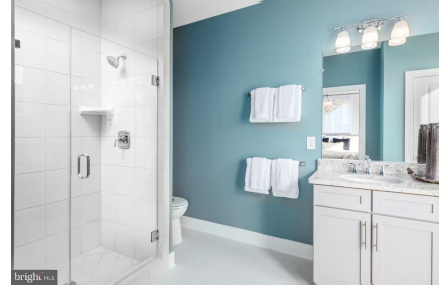


Photo is for illustrative purposes only



Photo is for illustrative purposes only



Photo is for illustrative purposes only



Photo is for illustrative purposes only



Photo is for illustrative purposes only



Photo is for illustrative purposes only



Clarksburg Outlets



Clarksburg Outlets



Clarksburg Outlets



Community



Community



Clubhouse



**CIMENT & SHIELDS TEAM**

**Barbara Ciment, Associate Broker**

**LONG & FOSTER REAL ESTATE**

(C) 301-346-9126

(O) 301-424-0900

[barbara@ciment.com](mailto:barbara@ciment.com)

[www.ciment.com](http://www.ciment.com)

