

Recent Home Sale: 6617 HILLANDALE RD #94 - \$645,000



Remarks MOTIVATED SELLER SAYS SELL! FRESHLY REFINISHED CABINETS AND NEW STAINLESS STEEL KITCHEN APPLIANCES! Welcome to 6617 Hillandale Road, a beautiful two-bedroom townhouse directly adjacent to Norwood Park. Located in the coveted Kenwood Forest II community, this sun-filled, spacious end unit features an updated kitchen with stainless steel appliances; separate living and dining areas and gleaming hardwood floors. A generous sized patio with direct access to the park is perfect for outdoor dining and entertaining. An unbeatable location - only minutes away from the Metro, shops and dining in downtown Bethesda, the Capital Crescent Trail and Bethesda Outdoor Pool - completes this wonderful home.

Rooms	Total	Main	Upper 1
Bedrooms	2	0	2
Full Baths	2	0	2
Half Baths	1	1	

Basic Information

Address 6617 HILLANDALE RD #94
City/Town CHEVY CHASE
State MD
Zip Code 20815
County MONTGOMERY
Type End of Row/Townhouse
MLS# MDMC687954

Ownership Condominium
Style Colonial
Adv Subdivision KENWOOD FOREST
DOM-Prop 18
Year Built 1951
Beds 2
Baths 2/1

Levels 2
Total Fin Sq Ft 1,110
Contract Date 2019-12-08
Close Date 2019-12-23
Close Price \$645,000

Exterior/Construction Features/Utilities

Exterior Brick
Water Type Public
Sewer Public Sewer

Heating Forced Air
Cooling Central A/C
Parking Parking Space Conveys, Surface, Unassigned

Porch/Patio Patio(s)
Other Features Secure Storage

Tax/Legal Information

Tax ID # 160701982233
Tax Year 2019
Tax Assessment Value \$563,333

Total Taxes \$6,745
Legal Subdiv KENWOOD FOREST II
Short Sale No

Foreclosure No
REO/Bank Owned No

Interior Features/Amenities

Appliances Built-In Microwave, Dishwasher, Disposal, Oven/Range - Electric, Stainless Steel Appliances, Washer/Dryer Stacked, Refrigerator, Freezer

Int. Style Attic, Crown Moldings, Dining Area, Pantry, Walk-in Closet(s), Wood Floors, Floor Plan - Traditional, Kitchen - Table Space

HOA/Condo/Coop Info

Condo/Coop Fee \$322

Amenities Common Grounds

Information Courtesy of McEneaney Associates, Inc.. Copyright 2021 Bright MLS. Information is believed to be accurate, but should not be relied upon without verification. Accuracy of square footage, lot size and other information is not guaranteed. This website courtesy of Barbara Ciment, Realtor, Long & Foster Real Estate, Inc.



CIMENT & SHIELDS TEAM

Barbara Ciment, Associate Broker



(C) 301-346-9126 (O) 301-424-0900
 barbara@ciment.com www.ciment.com

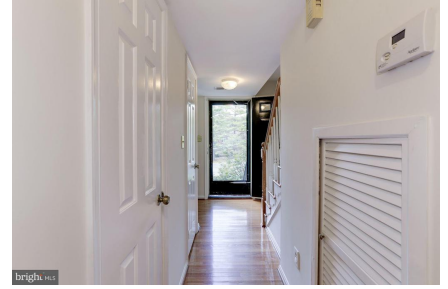




Kitchen



6617 Hillendale Road



Entry Hall



Living Room



Living Room



Living Room



Dining Area



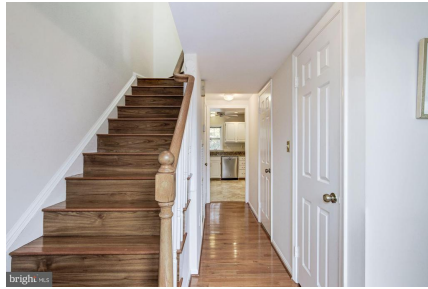
Dining Area



Kitchen



Kitchen



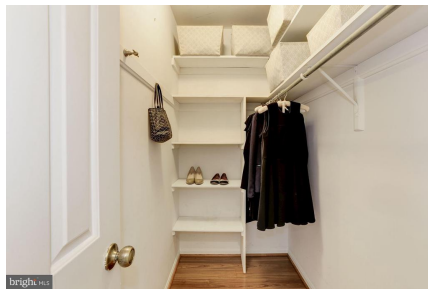
Stairway to Second Floor



Master Bedroom



Master Bath



Expansive Walk-In Closet



Second Bedroom



CIMENT & SHIELDS TEAM

Barbara Ciment, Associate Broker

LONG & FOSTER REAL ESTATE

(C) 301-346-9126

(O) 301-424-0900

barbara@ciment.com

www.ciment.com





Second Bedroom



Hall Bath



Patio Overlooking Norwood Park



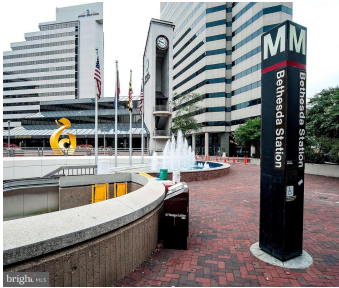
Patio Overlooking Norwood Park



Private Patio



Adjacent to Norwood Park



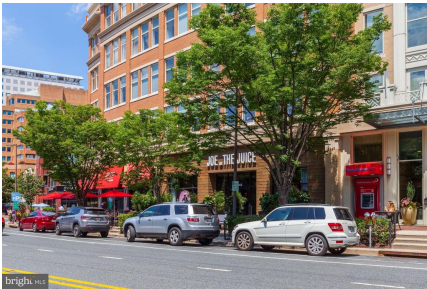
Steps Away from Bethesda Amenities



Steps Away from Bethesda Amenities



Steps Away from Bethesda Amenities



Steps Away from Bethesda Amenities



Steps Away from Bethesda Amenities



Steps Away from Bethesda Amenities



CIMENT & SHIELDS TEAM

Barbara Ciment, Associate Broker

LONG & FOSTER REAL ESTATE

(C) 301-346-9126

(O) 301-424-0900

barbara@ciment.com

www.ciment.com

