



**Remarks**

Rooms	Total
Bedrooms	
Full Baths	
Half Baths	

**Basic Information**

Lot Size 0

Acres 0

Tax Living Area 0

**Tax/Legal Information**

Tax ID #

Foreclosure No

Short Sale No

REO/Bank Owned No

Information Courtesy of . Copyright 2021 Bright MLS. Information is believed to be accurate, but should not be relied upon without verification. Accuracy of square footage, lot size and other information is not guaranteed. This website courtesy of Barbara Ciment, Realtor, Long & Foster Real Estate, Inc.



**Barbara Ciment, Associate Broker**



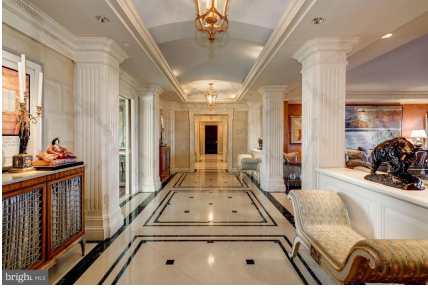
(C) 301-346-9126

(O) 301-424-0900

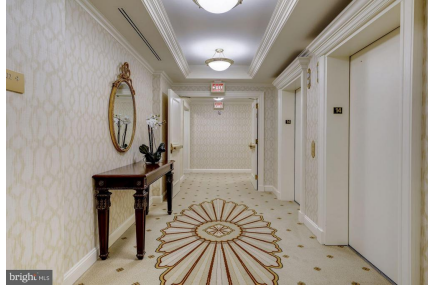
[barbara@ciment.com](mailto:barbara@ciment.com)

[www.ciment.com](http://www.ciment.com)





Center Hall with Barrel Ceiling



Foyer 14th Floor



Entrance 1403



Foyer



Powder Room



Living Room



Living Room with Fireplace



Balcony off Living Room



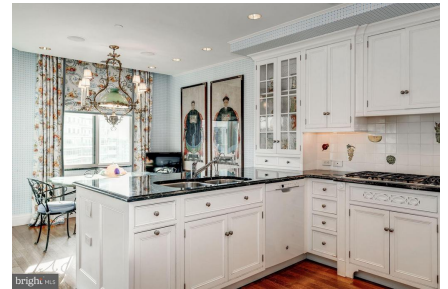
Dining Room



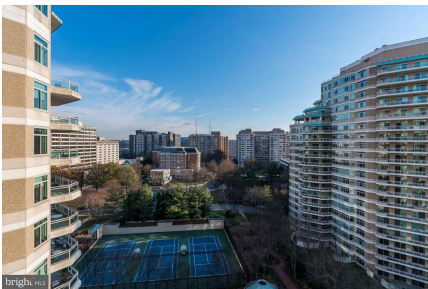
Dining Room with Balcony Access



Kitchen



Kitchen with view of terrace



View from Kitchen Balcony



Library



Library with Balcony access



**CIMENT & SHIELDS TEAM**

**Barbara Ciment, Associate Broker**

**LONG & FOSTER REAL ESTATE**

(C) 301-346-9126

(O) 301-424-0900

barbara@ciment.com

www.ciment.com





Millwork in Library



Family Room with Balcony access



Guest bedroom



Ensuite Guest Bathroom



Master Bedroom



Wall of Closets in Master Bedroom



Master Bedroom Closet #1



Master Bathroom # 1



Master Bedroom Closet #2



Master Bathroom #2



Master Bathroom #2



Balcony off Master Bedroom



Exercise Room in Master Bedroom Suite



Hallway to Bank of Elevators



Grand Lobby and Concierge



**CIMENT & SHIELDS TEAM**

**Barbara Ciment, Associate Broker**

**LONG & FOSTER REAL ESTATE**

(C) 301-346-9126

(O) 301-424-0900

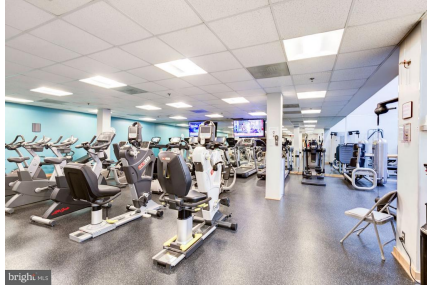
barbara@ciment.com

www.ciment.com





Lobby Sitting Room



Fitness Room



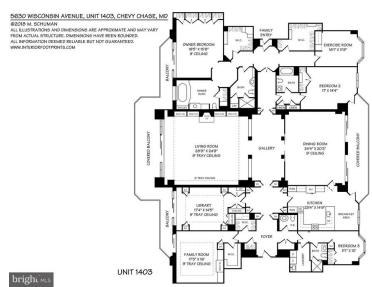
Indoor Pool



Outdoor Pool



Tennis Courts



Floor Plan Unit 1403



Entrance Parc Somerset



**CIMENT & SHIELDS TEAM**

**Barbara Ciment, Associate Broker**

**LONG & FOSTER REAL ESTATE**

(C) 301-346-9126

(O) 301-424-0900

[barbara@ciment.com](mailto:barbara@ciment.com)

[www.ciment.com](http://www.ciment.com)

